

| | | | |
|---|------------------------|-----------------------------|---|
| LOC/DME I-CJL 110.75 Chan 44 (Y) | APP CRS 164° | Rwy Idg TDZE Apt Elev | 8500 415 432 |
|---|------------------------|-----------------------------|---|

ILS RWY 16R (CAT II & III)

SEATTLE-TACOMA INTL (SEA)

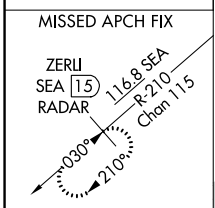
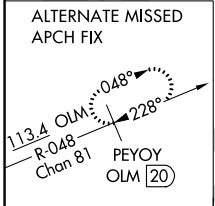
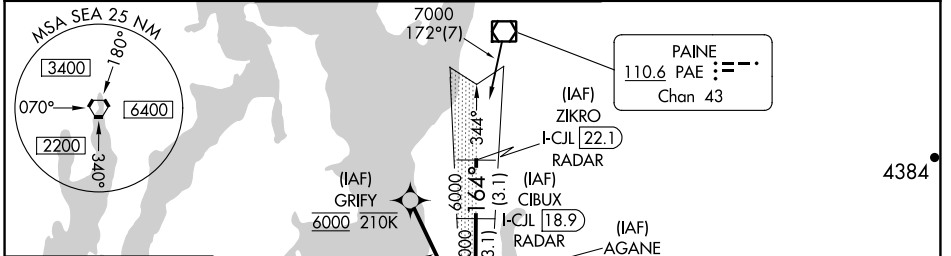
DME or RADAR required. From GRIFY: RNAV 1-GPS required.

Simultaneous approach authorized with Rwy 16L and 16C. Simultaneous operations require use of vertical guidance, maintain last assigned altitude until established on glideslope. Cat II: RVR 1000 authorized with specific OPSPEC, MSPEC or LOA approval and use of Autoland or HUD to touchdown.

ALSF-2

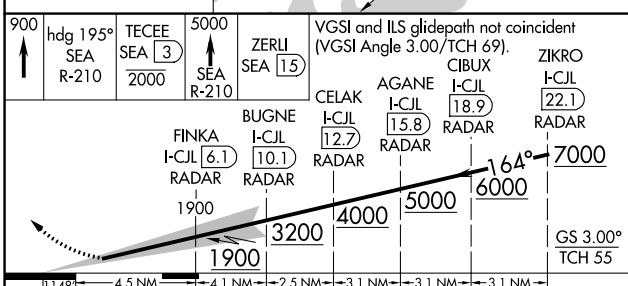
MISSED APPROACH: Climb to 900 then climb on heading 195° and on SEA VORTAC R-210 to cross TECEE/SEA 3 DME/RADAR at or below 2000 then climb to 5000 on SEA VORTAC R-210 to ZERLI/SEA 15 DME/RADAR and hold, continue climb-in-hold to 5000.

| | | | | | |
|------------------------|---|--|-------------------------|--------------------------|-------|
| D-ATIS 118.0 | SEATTLE APP CON 133.65 273.45 | SEATTLE TOWER 119.9 239.3 (Rwys 16L, 16C, 34C, 34R) 120.95 239.3 (Rwys 16R, 34L) | GND CON 121.7 | CLNC DEL 128.0 | CPDLC |
|------------------------|---|--|-------------------------|--------------------------|-------|

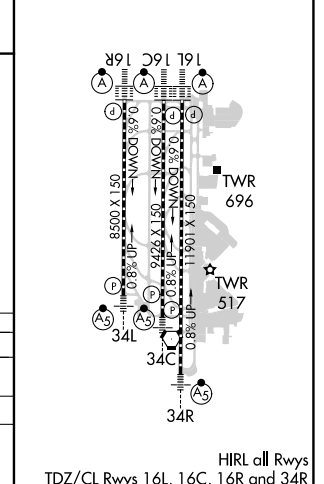


LOCALIZER **110.75**
I-CJL
Chan 44 (Y)

SEATTLE
116.8 SEA
Chan 115



| | |
|----------|----------|
| ELEV 432 | TDZE 415 |
|----------|----------|



| | | | | |
|-----------|-----------------------------|---|---|---|
| CATEGORY | A | B | C | D |
| S-ILS 16R | CAT II RA 139/12 100 DA 515 | | | |
| S-ILS 16R | CAT III RVR 03 | | | |

CATEGORY II & III ILS - SPECIAL AIRCREW & AIRCRAFT CERTIFICATION REQUIRED

NW-1, 11 JUL 2024 to 08 AUG 2024

NW-1, 11 JUL 2024 to 08 AUG 2024