

LOC/DME I-CJL <b>110.75</b> Chan 44 (Y)	APP CRS <b>164°</b>	Rwy Idg TDZE Apt Elev	<b>8500</b> <b>415</b> <b>432</b>
---	------------------------	-----------------------------	---

# ILS or LOC RWY 16R

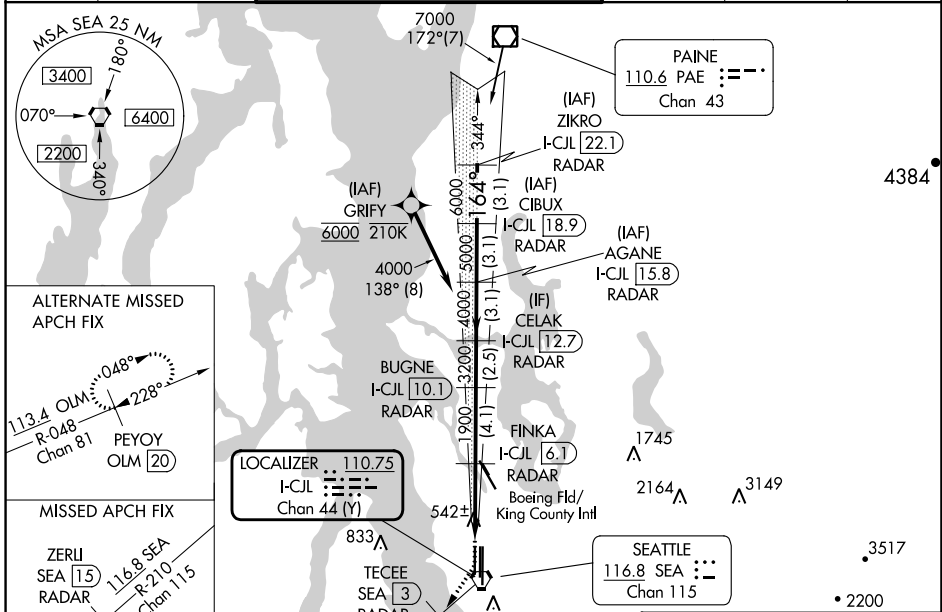
SEATTLE-TACOMA INTL (SEA)

DME or RADAR required. From GRIFY: RNAV 1-GPS required.

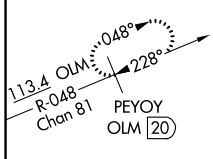
ALSF-2

MISSED APPROACH: Climb to 900 then climb on heading 195° and on SEA VORTAC R-210 to cross TECEE/SEA 3 DME/RADAR at or below 2000 then climb to 5000 on SEA VORTAC R-210 to ZERLI/SEA 15 DME/RADAR and hold, continue climb-in-hold to 5000.

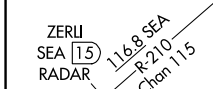
D-ATIS <b>118.0</b>	SEATTLE APP CON <b>133.65 273.45</b>	SEATTLE TOWER <b>119.9 239.3</b> (Rwys 16L, 16C, 34C, 34R) <b>120.95 239.3</b> (Rwys 16R, 34L)	GND CON <b>121.7</b>	CLNC DEL <b>128.0</b>	CPDLC
------------------------	---	--	-------------------------	--------------------------	-------



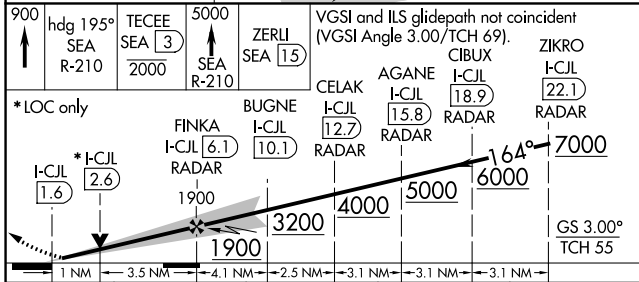
ALTERNATE MISSED APCH FIX



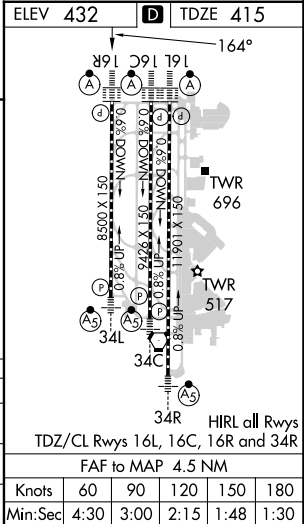
MISSED APCH FIX



ELEV 432	TDZE 415
----------	----------



CATEGORY	A	B	C	D
S-ILS 16R	615/18 200 (200-½)			
S-LOC 16R	800/24	385 (400-½)	800/35	385 (400-¾)
CIRCLING	1000-1	568 (600-1)	1000-1½ 568 (600-½)	1000-2 568 (600-2)



NW-1, 11 JUL 2024 to 08 AUG 2024

NW-1, 11 JUL 2024 to 08 AUG 2024