

LOC/DME I-SEA <b>110.3</b> Chan <b>40</b>	APP CRS <b>344°</b>	Rwy Idg <b>11901 9426</b> TDZE <b>372 387</b> Apt Elev <b>432 432</b>	34R 34C
---	------------------------	---	---------

# ILS or LOC RWY 34R

SEATTLE-TACOMA INTL (SEA)

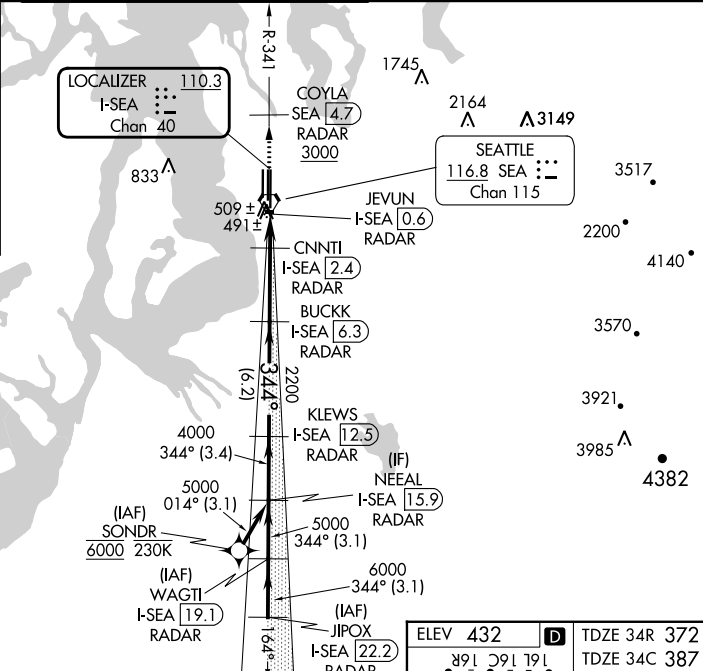
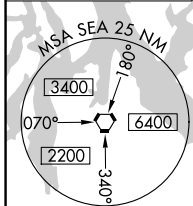
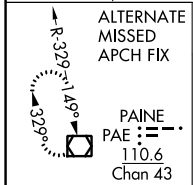
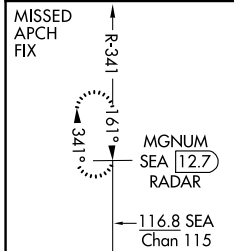
From SONDR: RNAV 1-GPS required.  
DME or RADAR required.

⚠ Inop table does not apply to Sidestep 34C Cats A/B.  
Simultaneous approach authorized with Rwy 34L.

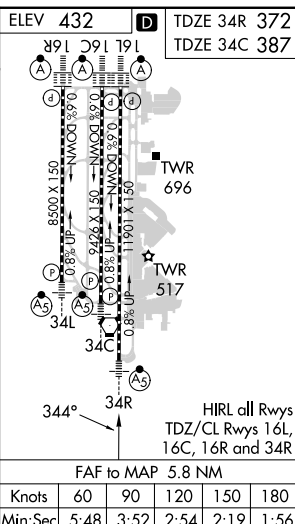
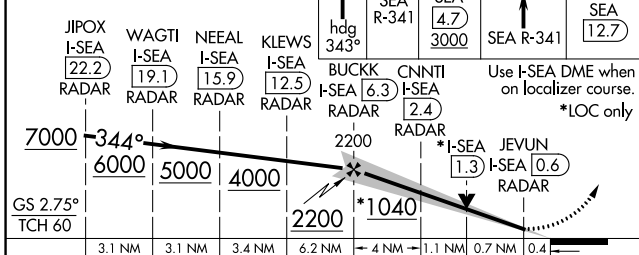


MISSED APPROACH: Climb on heading 343° and outbound on SEA VORTAC R-341 to cross COYLA/SEA 4.7 DME/RADAR at or above 3000 then climb to 5000 on SEA VORTAC R-341 to MGNUM/SEA 12.7 DME/RADAR and hold, continue climb-in-hold to 5000.

D-ATIS <b>118.0</b>	SEATTLE APP CON <b>133.65 273.45</b>	SEATTLE TOWER <b>119.9 239.3</b> (Rwys 16L, 16C, 34C, 34R) <b>120.95 239.3</b> (Rwys 16R, 34L)	GND CON <b>121.7</b>	CLNC DEL <b>128.0</b>	CPDLC
------------------------	---	--	-------------------------	--------------------------	-------



VGSI and ILS glidepath not coincident (VGSI Angle 2.75/TCH 81).



CATEGORY	A	B	C	D
S-ILS 34R	572/18 200 (200-½)			
S-LOC 34R	740/24	368 (400-½)	740/35	368 (400-¾)
SIDESTEP 34C	760/55 373 (400-1)		760-1½ 373 (400-1½)	
Ⓢ CIRCLING	1000-1 568 (600-1)		1000-1½ 568 (600-1½)	1000-2 568 (600-2)

NW-1, 11 JUL 2024 to 08 AUG 2024

NW-1, 11 JUL 2024 to 08 AUG 2024