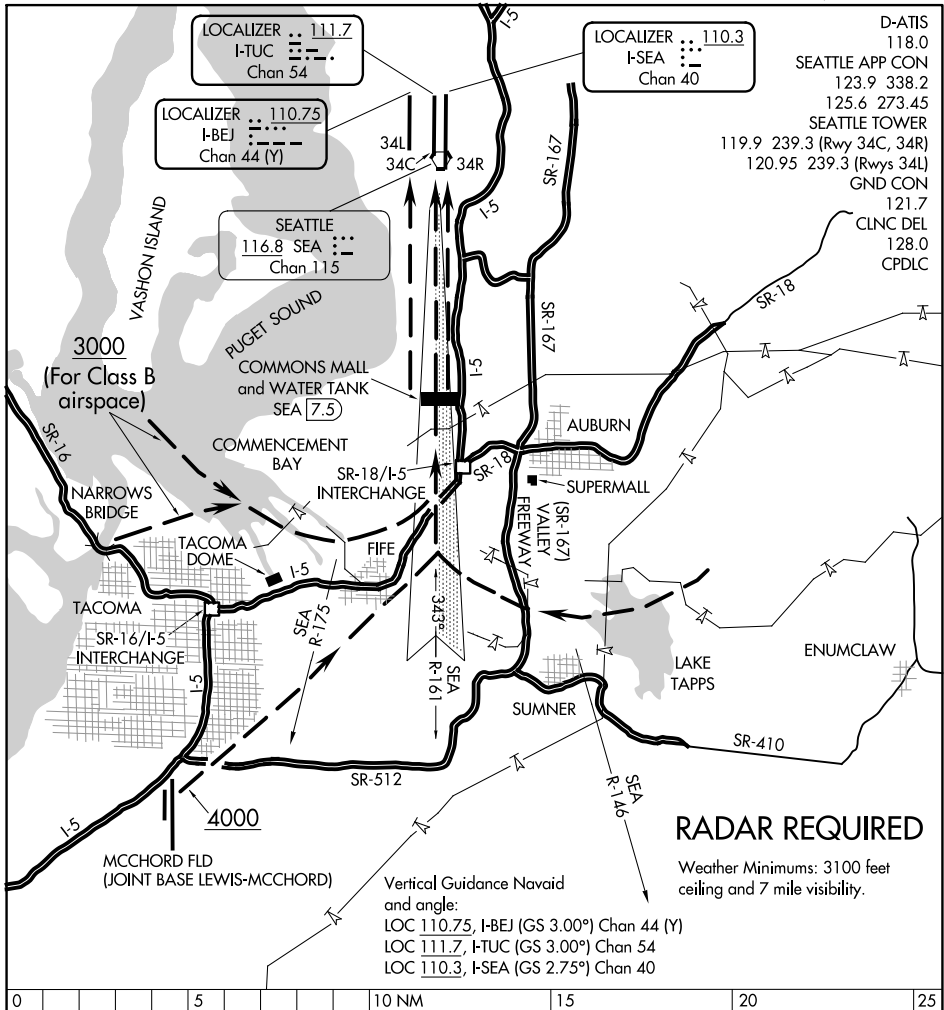


MALL VISUAL RWY 34R/C/L

SEATTLE-TACOMA INTL (SEA)
SEATTLE, WASHINGTON

AL-582 (FAA)



NW-1, 11 JUL 2024 to 08 AUG 2024

NW-1, 11 JUL 2024 to 08 AUG 2024

D-ATIS 118.0
 SEATTLE APP CON 123.9 338.2
 125.6 273.45
 SEATTLE TOWER 119.9 239.3 (Rwy 34C, 34R)
 120.95 239.3 (Rwys 34L)
 GND CON 121.7
 CLNC DEL 128.0
 CPDLC

RADAR REQUIRED

Weather Minimums: 3100 feet ceiling and 7 mile visibility.

Vertical Guidance Navaid and angle:
 LOC 110.75, I-BEJ (GS 3.00°) Chan 44 (Y)
 LOC 111.7, I-TUC (GS 3.00°) Chan 54
 LOC 110.3, I-SEA (GS 2.75°) Chan 40



MALL VISUAL APPROACH RWY 34R/C/L

When the ceiling is at least 3100' and visibility is at least 7 miles, aircraft may be vectored towards Commencement Bay or McChord Fld or Lake Tapps for a Mall Visual Runway 34R/C/L Approach. When cleared for this approach; proceed inbound visually using the depicted landmarks to the centerline of runway 34R/C/L. Turn final before or over the interchange of State Road 18 (SR-18) and Interstate 5. Be established on the localizer or runway centerline at the Commons Mall and Water Tank (7.5 DME) and proceed visually to runway 34R/C/L.

MALL VISUAL RWY 34R/C/L

47°27'N-122°19'W

SEATTLE, WASHINGTON
SEATTLE-TACOMA INTL (SEA)