

MARNR SEVEN ARRIVAL (RNAV) Transition Routes

- BUHNR TRANSITION (BUHNR.MARNR7)
- JIGEB TRANSITION (JIGEB.MARNR7)
- ROESH TRANSITION (ROESH.MARNR7)
- TATOOSH TRANSITION (TOU.MARNR7)
- VANCOUVER TRANSITION (YVR.MARNR7)
- VICTORIA TRANSITION (YYJ.MARNR7)

VANCOUVER
YVR
FL200

D-ATIS
118.0
SEATTLE APP CON
125.6 273.45

- NOTE: RADAR required.
- NOTE: RNAV 1.
- NOTE: DME/DME/IRU or GPS required.
- NOTE: Turbojet aircraft descend via mach number until intercepting 280K. Maintain 280K until slowed by the STAR.
- NOTE: Non-RNP AR aircraft landing Rwy 34L/C/R, expect RADAR vectors to final approach course prior to EMMSS.

VICTORIA
YYJ
FL200

9000
*2800
1.53°
(27)

ROESH

9000
*4400
1.53°
(36)

10000
*3900
1.32°
(27)

ORCUS
17000 280K

9000
*4400
1.32°
(21)

JIGEB
12000

BUHNR
12000

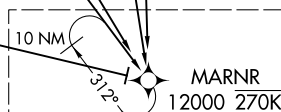
9000
*4400
1.41°
(8)

TATOOSH
TOU
FL200

10000
*5100
0.86°
(51)

LOO00
17000 280K

10000
*5000
0.87°
(22)



MARNR
12000 270K

See following page for Arrival Routes.

NOTE: Chart not to scale.

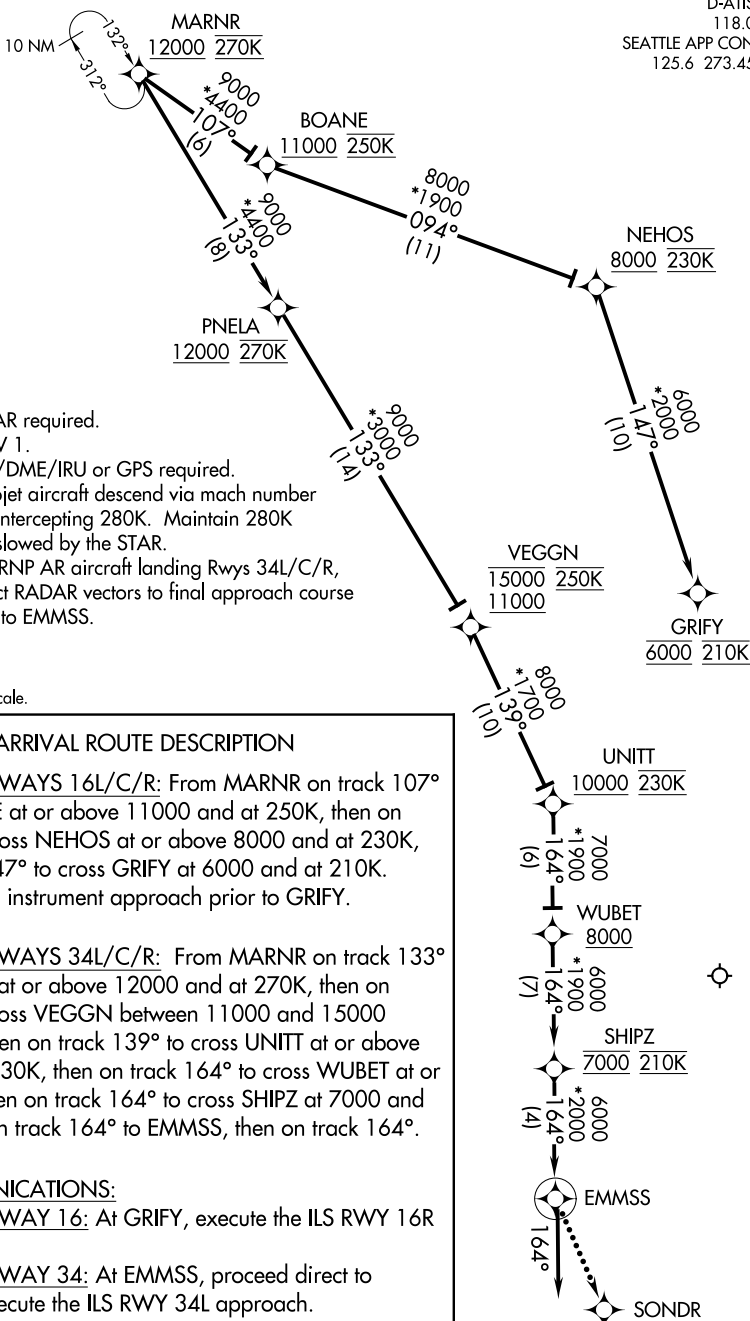
(CONTINUED ON FOLLOWING PAGE)

NW-1, 11 JUL 2024 to 08 AUG 2024

NW-1, 11 JUL 2024 to 08 AUG 2024

MARNR SEVEN ARRIVAL (RNAV) Transition Routes

D-ATIS
118.0
SEATTLE APP CON
125.6 273.45



- NOTE: RADAR required.
- NOTE: RNAV 1.
- NOTE: DME/DME/IRU or GPS required.
- NOTE: Turbojet aircraft descend via mach number until intercepting 280K. Maintain 280K until slowed by the STAR.
- NOTE: Non-RNP AR aircraft landing Rwsy 34L/C/R, expect RADAR vectors to final approach course prior to EMMSS.

NOTE: Chart not to scale.

ARRIVAL ROUTE DESCRIPTION

LANDING RUNWAYS 16L/C/R: From MARNR on track 107° to cross BOANE at or above 11000 and at 250K, then on track 094° to cross NEHOS at or above 8000 and at 230K, then on track 147° to cross GRIFY at 6000 and at 210K. Expect assigned instrument approach prior to GRIFY.

LANDING RUNWAYS 34L/C/R: From MARNR on track 133° to cross PNELA at or above 12000 and at 270K, then on track 133° to cross VEGGN between 11000 and 15000 and at 250K, then on track 139° to cross UNITT at or above 10000 and at 230K, then on track 164° to cross WUBET at or above 8000, then on track 164° to cross SHIPZ at 7000 and at 210K, then on track 164° to EMMSS, then on track 164°.

LOST COMMUNICATIONS:

LANDING RUNWAY 16: At GRIFY, execute the ILS RWY 16R approach.

LANDING RUNWAY 34: At EMMSS, proceed direct to SONDR and execute the ILS RWY 34L approach.

NW-1, 11 JUL 2024 to 08 AUG 2024

NW-1, 11 JUL 2024 to 08 AUG 2024