

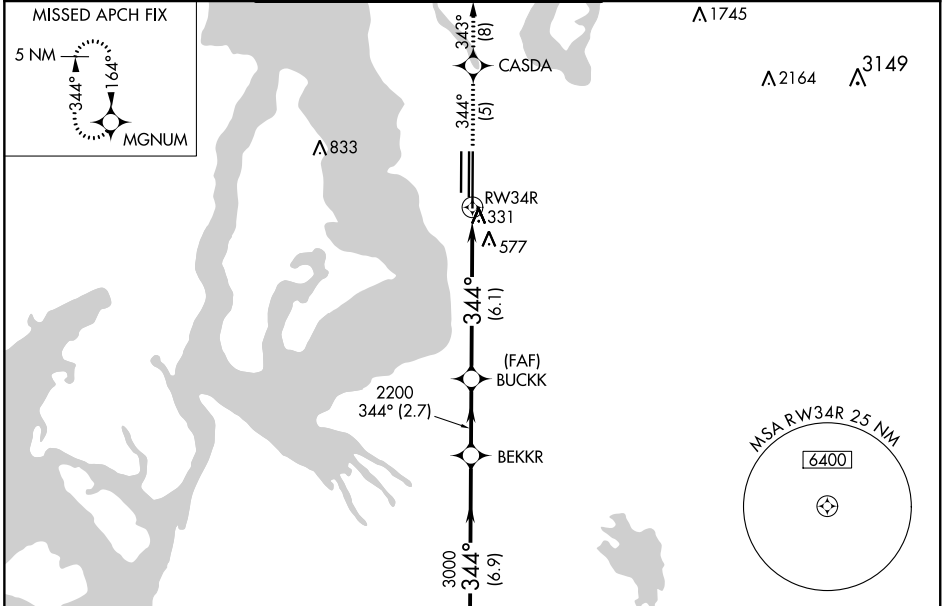
| | | |
|-------------|----------|--------------|
| APP CRS | Rwy Idg | 11901 |
| 344° | TDZE | 372 |
| | Apt Elev | 432 |

RNAV (RNP) Z RWY 34R

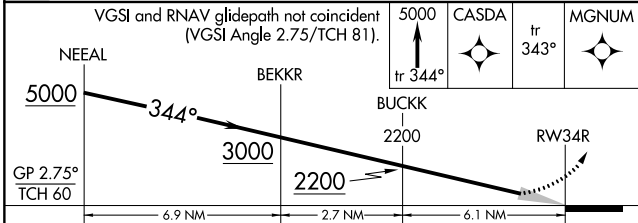
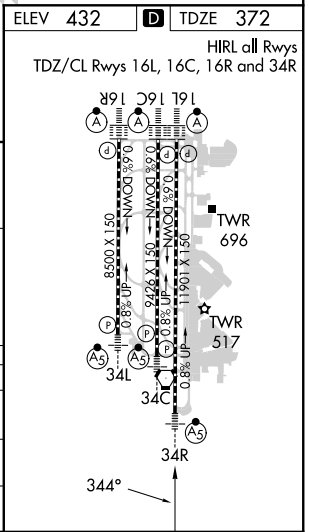
SEATTLE-TACOMA INTL (SEA)

| | | | | |
|---|--|-------|--|--|
| RNP AR APCH. | | MALSR | MISSED APPROACH: Climb to 5000 on track 344° to CASDA and on track 343° to MGNUM and hold, continue climb-in-hold to 5000. | |
| <p>Simultaneous approach authorized. For uncompensated Baro-VNAV systems, procedure NA below -6°C or above 54°C. Use of FD or AP required during simultaneous operations. For inop ALS, increase RNP 0.28 all Cats visibility to 1 3/8 SM. Inop table does not apply to RNP 0.30.</p> | | | | |

| | | | | | |
|--------------|----------------------|---|--------------|--------------|-------|
| D-ATIS | SEATTLE APP CON | SEATTLE TOWER | GND CON | CLNC DEL | CPDLC |
| 118.0 | 133.65 273.45 | 119.9 239.3 (Rwys 16L, 16C, 34C, 34R) 120.95 239.3 (Rwys 16R, 34L) | 121.7 | 128.0 | |



| | | | |
|---|-----|------|-----|
| ELEV | 432 | TDZE | 372 |
| HIRL all Rwys TDZ/CL Rwys 16L, 16C, 16R and 34R | | | |



| | | | | |
|-------------|---|-----------|-----------------|---|
| CATEGORY | A | B | C | D |
| RNP 0.28 DA | | 867/50 | 495 (500-1) | |
| RNP 0.30 DA | | 880-1 1/2 | 508 (500-1 1/2) | |

AUTHORIZATION REQUIRED

NW-1, 11 JUL 2024 to 08 AUG 2024

NW-1, 11 JUL 2024 to 08 AUG 2024