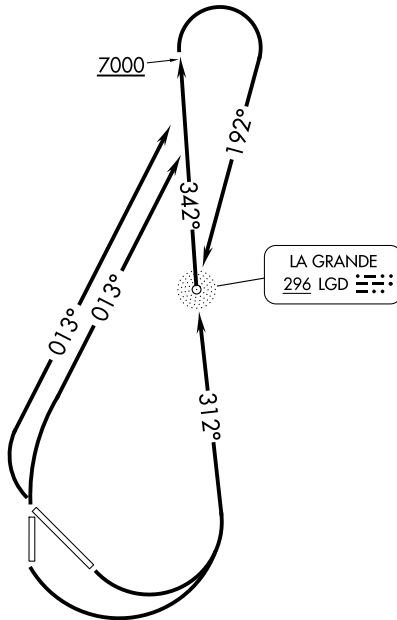


SEATTLE CENTER
132.6 269.35
CTAF
122.8



NOTE: ADF required.

TAKEOFF MINIMUMS

- Rwy 30, 35: Standard.
- Rwy 12: Standard with minimum climb of 320' per NM to 6400 or 4300-3 for VCOA.
- Rwy 17: Standard with minimum climb of 651' per NM to 5400 or 4300-3 for VCOA.

TAKEOFF OBSTACLE NOTES

- Rwy 12: Fence 8' from DER, 407' left of centerline, 4' AGL/2712' MSL.
Pole 144' from DER, 451' right of centerline, 10' AGL/2715' MSL.
Vehicle on road 208 from DER, 444' right of centerline, 2716' MSL.
- Rwy 17: Pole 105' from DER, 445' right of centerline, 30' AGL/2736' MSL.
Building 182' from DER, 493' left of centerline, 23' AGL/2733' MSL.
Pole 209' from DER, 445' right of centerline, 33' AGL/2741' MSL.
Tree 514' from DER, 527' right of centerline, 2753' MSL.
Transmission line 1615' from DER, 303' right of centerline, 45' AGL/2754' MSL.
- Rwy 30: Lighting 9' from DER, 29' right of centerline, 2' AGL/2719' MSL.
Lighting 9' from DER, 29' left of centerline, 2' AGL/2719' MSL.
Buildings beginning 12' from DER, 443' left of centerline, up to 24' AGL/2740' MSL.
Vehicles on road beginning 62' from DER, 408' right of centerline, up to 2722' MSL.
- Rwy 35: Building 600' from DER, 520' left of centerline, 22' AGL/2737' MSL.
Building 612' from DER, 597' left of centerline, 25' AGL/2738' MSL.
Building 620' from DER, 520' left of centerline, 24' AGL/2740' MSL.

NOTE: Chart not to scale.

DEPARTURE ROUTE DESCRIPTION

TAKEOFF RUNWAYS 12, 17: Climbing left turn on course 312° to LGD NDB and on bearing 342° from LGD NDB to 7000, thence. . . .

TAKEOFF RUNWAYS 30, 35: Climbing right turn heading 013° to intercept bearing 342° from LGD NDB to 7000, thence. . . .

. . . .continue climbing right turn to intercept course 192° to LGD NDB, then continue climb to MEA for route of flight.

VCOA RUNWAYS 12, 17: Obtain ATC approval for VCOA when requesting IFR clearance. Climb in visual conditions to cross La Grande/Union County airport at or above 6900 before proceeding on course.