

WAAS CH <b>66000</b> <b>W17A</b>	APP CRS <b>166°</b>	Rwy Idg TDZE Apt Elev	<b>3400</b> <b>2714</b> <b>2718</b>
--	------------------------	-----------------------------	---

# RNAV (GPS) RWY 17

LA GRANDE/UNION COUNTY (L.G.D)

RNP APCH - GPS.

**▼** Circling NA for Cats C and D southwest of Rwy 12-30.  
**▲** NA Fly visual to airport authorized during day only.  
**☁** -17°C \* Day visibility minimums 3 SM.

MISSED APPROACH: Climb to 4600 then climbing left turn to 9000 direct NUDEQ and hold, continue climb-in-hold to 9000.

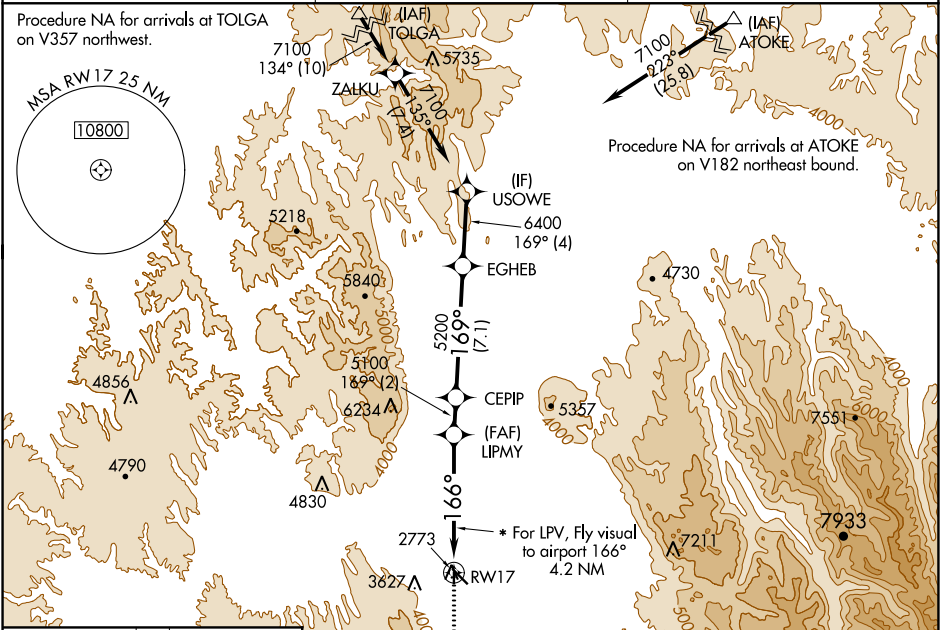
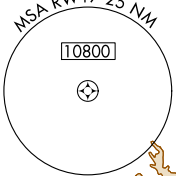
AWOS-3PT  
**135.075**

SEATTLE CENTER  
**132.6 269.35**

UNICOM  
**122.8 (CTAF) 0**

Procedure NA for arrivals at TOLGA on V357 northwest.

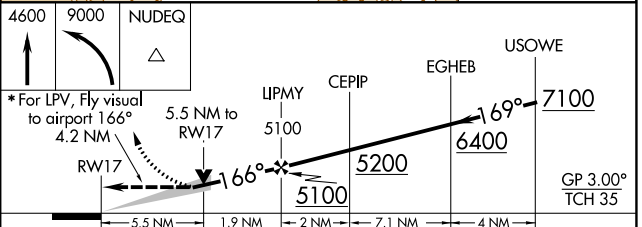
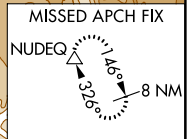
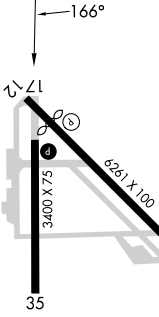
Procedure NA for arrivals at ATOKE on V182 northeast bound.



NW-1, 11 JUL 2024 to 08 AUG 2024

NW-1, 11 JUL 2024 to 08 AUG 2024

ELEV 2718 **D** TDZE 2714



CATEGORY	A	B	C	D
LPV DA*	4112-5 1398 (1400-5)			
LNAV MDA	4540-1¼ 1826 (1900-1¼)	4540-1½ 1826 (1900-1½)	4540-3	1826 (1900-3)
<b>C</b> CIRCLING	4540-1¼ 1822 (1900-1¼)	4540-1½ 1822 (1900-1½)	4540-3	1822 (1900-3)

REIL Rwy 30  
 REIL Rwy 17 and 35 **0**  
 MRL Rwy 12-30 and 17-35 **0**