

PEORIA, ILLINOIS

HI-ILS or LOC RWY 31

LOC I-PIA 109.9	APCH CRS 309°	Rwy Idg 10,104 TDZE 650 Arprt Elev 661
---------------------------	-------------------------	---

[USAF]

GENERAL DOWNING - PEORIA INTL (KPIA)

ADF required for LOC only

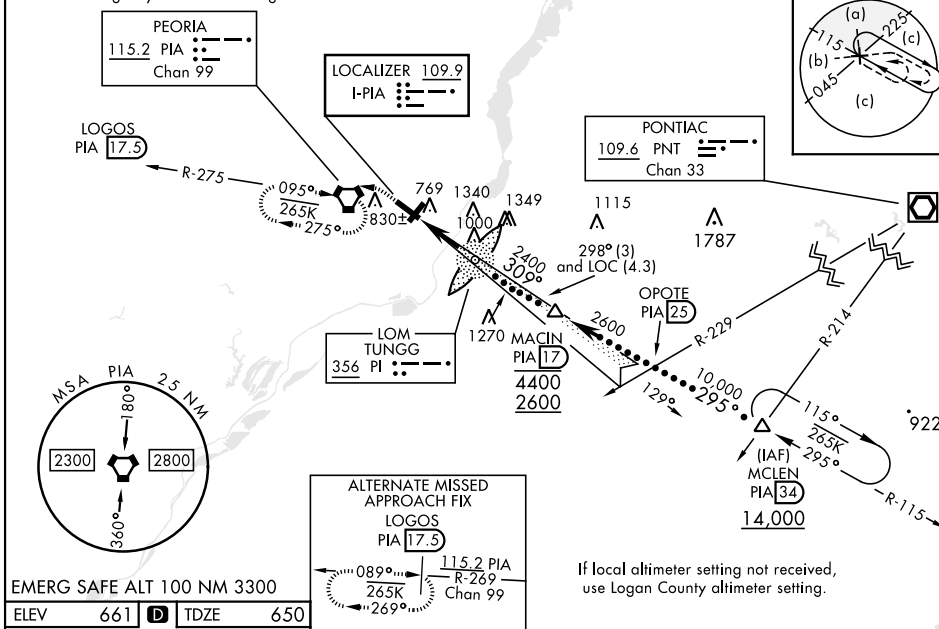
- * When ALS inop, increase RVR to 40.
- ** When ALS inop, increase vis to 1 $\frac{1}{8}$ miles.
- *** When ALS inop, increase vis to 1 $\frac{1}{2}$ miles.



MISSED APPROACH: Climb to 1200, then climbing left turn to 2400 direct PIA VORTAC and hold. (TACAN aircraft: continue via PIA R-269 to LOGOS/PIA 17.5 DME and hold west, right turn 089° inbound).

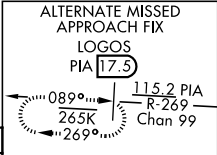
ATIS 126.1 282.2	SAINT LOUIS APP CON 125.8 269.2	PEORIA TOWER 124.0 353.85	GND CON 121.85 348.6
----------------------------	---	-------------------------------------	--------------------------------

****Circling Rwy 13-31 NA at night.



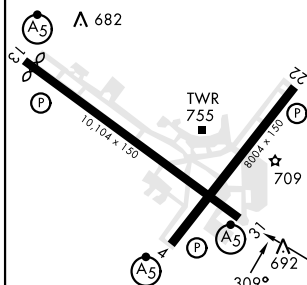
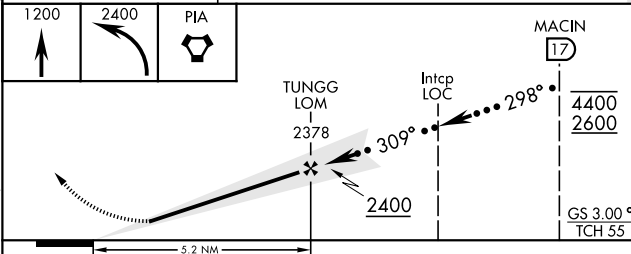
EMERG SAFE ALT 100 NM 3300

ELEV	661	TDZE	650
------	-----	------	-----



If local altimeter setting not received, use Logan County altimeter setting.

Rwy 4 Idg 7826'
Rwy 13 Idg 9604'



HIRL Rwy 4-22, 13-31

FAF to MAP 5.2 NM					
Knots	120	140	160	180	200
Min:Sec	2:36	2:14	1:57	1:44	1:34

CATEGORY	C	D	E
S-ILS 31*	850/24	200	(200-1/2)
S-LOC 31**	1200/60	550	(600-1 1/4)
C CIRCLING	1200-1 1/8 539 (600-1 1/8)	1400-2 1/4 739 (800-2 1/4)	1680-3 1019 (1100-3)
LOGAN COUNTY ALTIMETER MINIMA			
S-ILS 31*	939/24	289	(300-1/2)
S-LOC 31***	1300-1 1/8	650	(700-1 1/8)
C CIRCLING	1300-1 1/8 639 (700-1 1/8)	1460-2 3/4 799 (800-2 3/4)	1720-3 1059 (1100-3)

PEORIA, ILLINOIS

40°40'N-89°42'W

GENERAL DOWNING - PEORIA INTL (KPIA)

Amdt 7D 22APR21

HI-ILS or LOC RWY 31

EC-3, 11 JUL 2024 to 08 AUG 2024

EC-3, 11 JUL 2024 to 08 AUG 2024