

LOC I-PIA 109.9	APP CRS 309°	Rwy ldg 10104 TDZE 650 Apt Elev 661
---------------------------	------------------------	--

ILS or LOC RWY 31

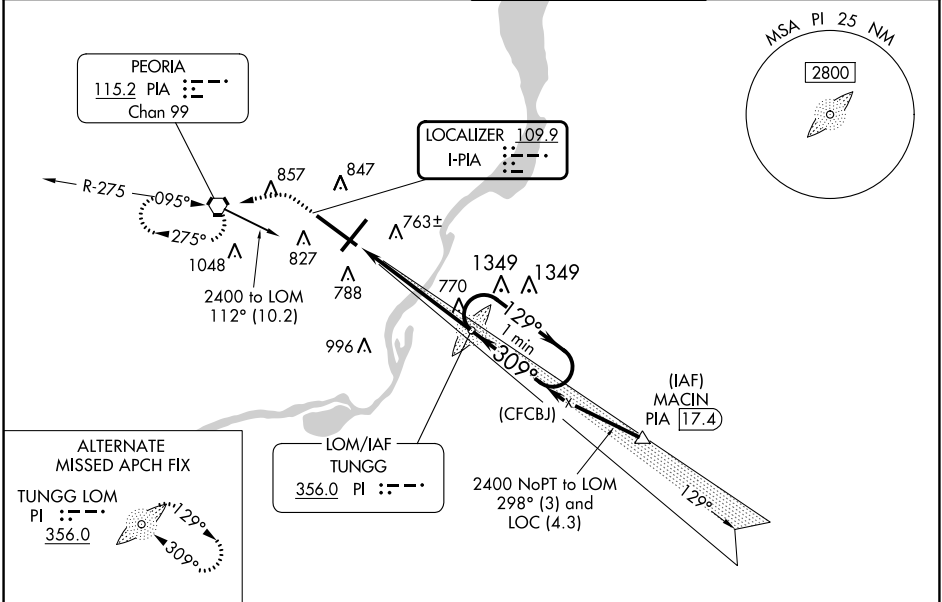
GENERAL DOWNING-PEORIA INTL (PIA)

⚠ When local altimeter setting not received, use Lincoln altimeter setting and increase S-ILS 31 DA to 939 feet; increase all MDAs 100 feet; and Circling visibility Cat C/D ½ SM. For inop ALS, when using Lincoln altimeter setting increase ILS-31 all Cats visibility to RVR 4500.
* RVR 1800 authorized with the use of FD or AP or HUD to DA.



MISSED APPROACH: Climb to 1200 then climbing left turn to 2400 direct PIA VORTAC and hold, continue climb-in-hold to 2400.

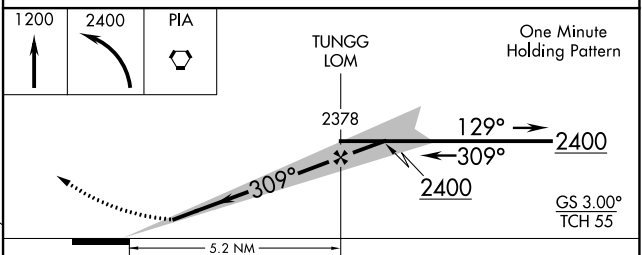
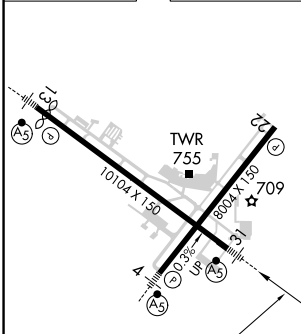
ATIS 126.1 282.2	SAINT LOUIS APP CON 125.8 269.2	PEORIA TOWER 124.0 353.85	GND CON 121.85 348.6
----------------------------	---	-------------------------------------	--------------------------------



EC-3, 11 JUL 2024 to 08 AUG 2024

EC-3, 11 JUL 2024 to 08 AUG 2024

ELEV 661	D	TDZE 650
----------	----------	----------



HIRL Rwy 4-22 and 13-31	FAF to MAP 5.2 NM				
Knots	60	90	120	150	180
Min:Sec	5:12	3:28	2:36	2:05	1:44
C CIRCLING	1200-1	539 (600-1)	1200-1½ 539 (600-1½)	1400-2¼ 739 (800-2¼)	