


LOC/DME I-TVI 110.1 Chan 38	APP CRS 225°	Rwy Idg 5504 TDZE 242 Aprt Elev 264
---	------------------------	--

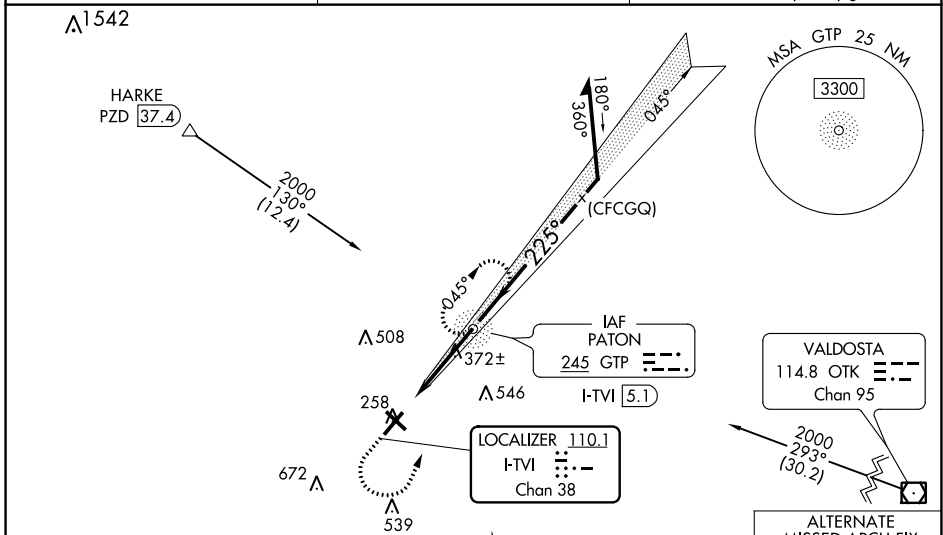
ILS or LOC RWY 22

THOMASVILLE RGNL (TVI)

ADF REQUIRED. VDP NA with Valdosta altimeter setting. When local altimeter setting not received, use Valdosta altimeter setting and increase DA to 683 feet and all MDA 100 feet. Increase S-ILS 22 all Cats visibility $\frac{3}{8}$ SM, increase S-LOC 22 and Circling Cats C/D visibility $\frac{1}{4}$ SM. For inop ALS, increase S-ILS 22 all Cats, and S-LOC 22 Cat D visibility to $1\frac{1}{8}$ SM. For inop ALS when using Valdosta altimeter setting, increase S-ILS 22 all Cats visibility to $1\frac{1}{2}$ SM and increase S-LOC 22 Cat D visibility to $1\frac{3}{8}$ SM. Circling Rwy 4, 14, 32 NA at night.

MALSIF

MISSED APPROACH:
 Climb to 900 then climbing left turn to 2000 direct GTP NDB and hold.

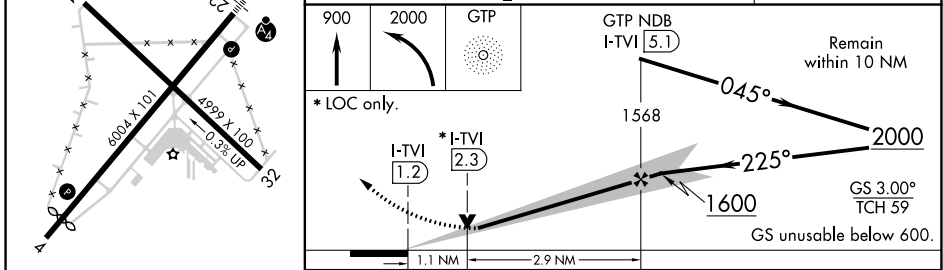
AWOS-3PT 119.175	VALDOSTA APP CON* 126.6 285.6	UNICOM 123.075 (CTAF)
----------------------------	---	---------------------------------



ADF REQUIRED

ELEV 264	TDZE 242
----------	----------

ADF diagram details: Runway 22 heading 225°. Runway 14 heading 045°. Runway 32 heading 305°. Altitudes: 600 x 101, 499 x 100, 0.3% UP.



CATEGORY	A	B	C	D
S-ILS 22	600- $\frac{7}{8}$ 358 (400- $\frac{7}{8}$)			
S-LOC 22	640- $\frac{3}{4}$ 398 (400- $\frac{3}{4}$)	640- $\frac{7}{8}$ 398 (400- $\frac{7}{8}$)		
CIRCLING	700-1 436 (500-1)	800-1 536 (600-1)	900-1 $\frac{3}{4}$ 636 (700-1 $\frac{3}{4}$)	1040-2 $\frac{1}{2}$ 776 (800-2 $\frac{1}{2}$)

THOMASVILLE, GEORGIA
Amdt 2 28FEB19

30°54'N-83°53'W

THOMASVILLE RGNL (TVI) ILS or LOC RWY 22

SE-4, 11 JUL 2024 to 08 AUG 2024

SE-4, 11 JUL 2024 to 08 AUG 2024