

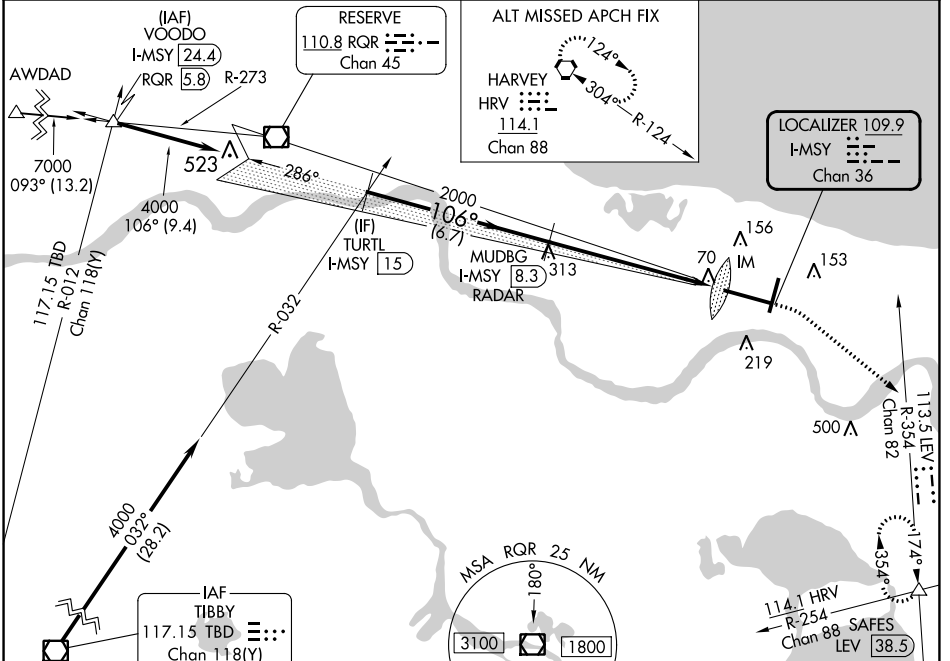
LOC/DME I-MSY 109.9 Chan 36	APP CRS 106°	Rwy Idg 9800 TDZE 4 Apt Elev 4
---	------------------------	---

ILS RWY 11 (SA CAT I)

LOUIS ARMSTRONG NEW ORLEANS INTL (MSY)

RADAR or DME required. Requires specific OPSPEC, MSPEC, or LOA approval and use of HUD to DH.		ALSF-2 	MISSED APPROACH: Climb to 800 then climbing right turn to 2000 on heading 130° and on LEV VORTAC R-354 to SAFES INT/LEV 38.5 DME and hold.	
--	--	------------	--	--

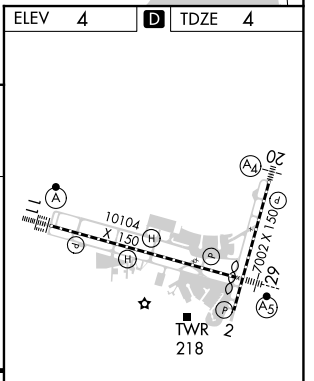
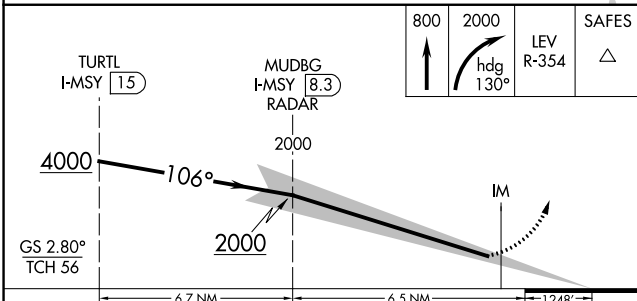
D-ATIS 127.55	NEW ORLEANS APP CON WEST 125.5 350.35 EAST 133.15 290.3	NEW ORLEANS TOWER 119.5 254.3	GND CON 121.9 273.525	CLNC DEL 120.925	CPDLC
-------------------------	---	---	---------------------------------	----------------------------	-------



SC-4, 11 JUL 2024 to 08 AUG 2024

SC-4, 11 JUL 2024 to 08 AUG 2024

ELEV 4	D TDZE 4
--------	-----------------



CATEGORY	A	B	C	D
S-ILS 11	RA 150/14		150	DA 154
SA CATEGORY I ILS - SPECIAL AIRCREW & AIRCRAFT CERTIFICATION REQUIRED				

RLS Rwy 2
TDZ/CL Rwy 11
HRL All Runways