

WAAS CH 49220 W02A	APP CRS 016°	Rwy Idg 7002 TDZE 2 Apt Elev 4
--	------------------------	---

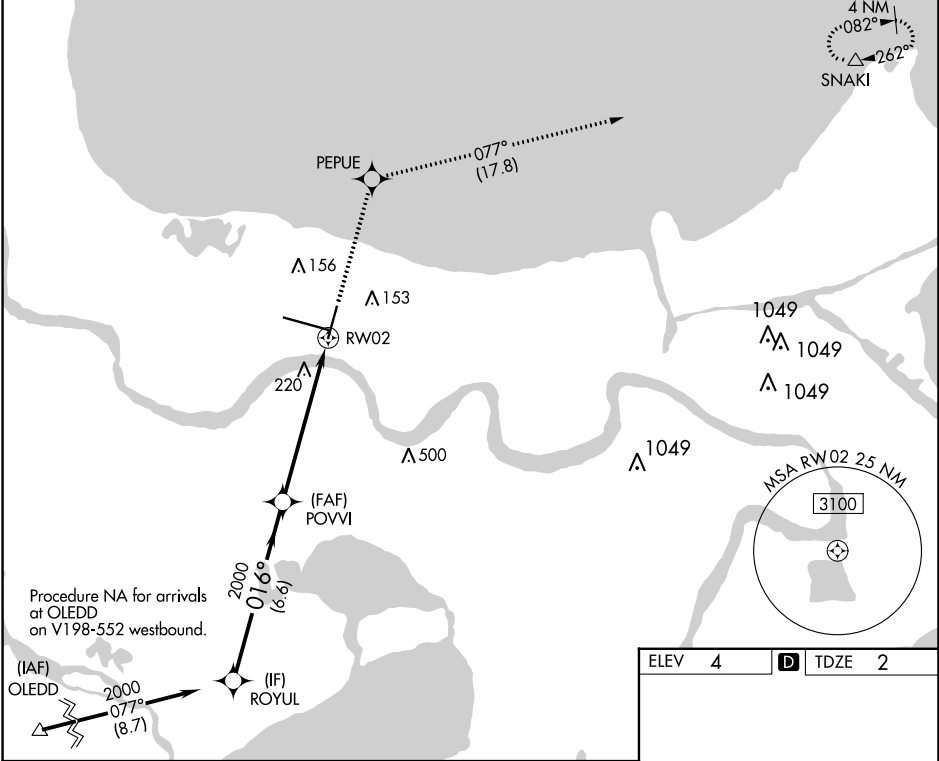
RNAV (GPS) RWY 2

LOUIS ARMSTRONG NEW ORLEANS INTL (MSY)

RNP APCH - GPS. MISSED APPROACH: Climb to 3000 direct PEPUE and on track 077° to SNAKI and hold.

▼ Rwy 2 helicopter visibility reduction below RVR 4000 NA. For uncompensated Baro-VNAV systems, LNAV/VNAV NA below 0°C or above 54°C.

D-ATIS 127.55	NEW ORLEANS APP CON WEST 125.5 350.35 EAST 133.15 290.3	NEW ORLEANS TOWER 119.5 254.3	GND CON 121.9 273.525	CLNC DEL 120.925	CPDLC
-------------------------	---	---	---------------------------------	----------------------------	-------



Procedure NA for arrivals at OLEDD on V198-552 westbound.

(IAF) OLEDD 2000 077° (8.7)

(IF) ROYUL 2000 016° (6.6)

(FAF) POVVI 2000

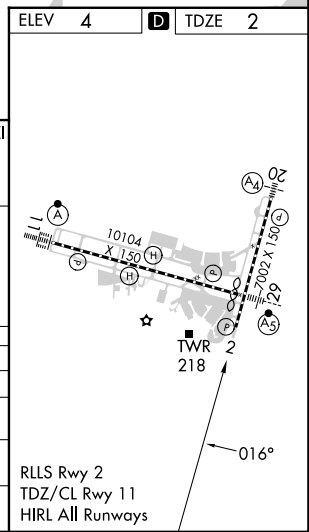
3000 PEPUE tr 077° SNAKI

1.3 NM to RW02

GP 3.00° TCH 56

6.6 NM 4.8 NM 1.3 NM

VGSI and RNAV glidepath not coincident (VGSI Angle 3.00/TCH 52).	3000	PEPUE	tr 077°	SNAKI
ROYUL	POVVI	RW02		
2000	2000			
016°				
CATEGORY	A	B	C	D
LPV DA		398/60	396 (400-1¼)	
LNAV/VNAV DA		379/55	377 (400-1)	
LNAV MDA	480/55	478 (500-1)	480-1¾ 478 (500-1¾)	
CIRCLING	520-1	516 (600-1)	580-1½ 576 (600-1½)	580-2 576 (600-2)



SC-4, 11 JUL 2024 to 08 AUG 2024

SC-4, 11 JUL 2024 to 08 AUG 2024