

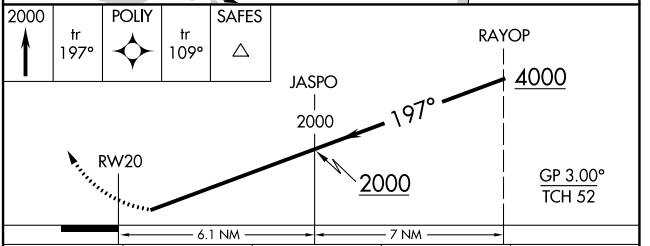
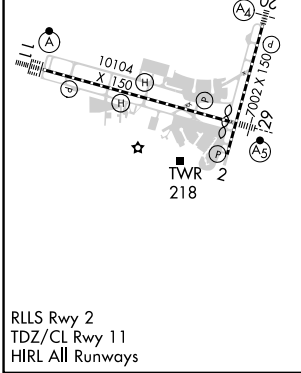
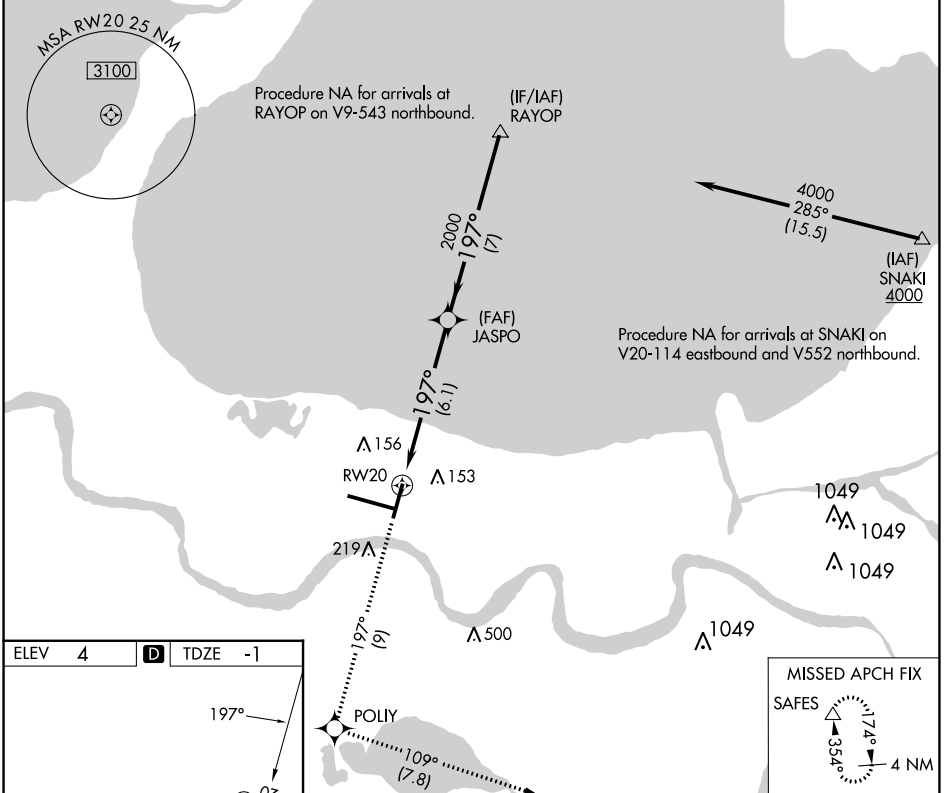
APP CRS 197°	Rwy Idg 6948
	TDZE -1
	Apt Elev 4

RNAV (RNP) Z RWY 20

LOUIS ARMSTRONG NEW ORLEANS INTL (MSY)

RNP AR APCH - GPS.		MALS 	MISSED APPROACH: Climb to 2000 on track 197° to POLIY and track 109° to SAFES and hold.
▼ For uncompensated Baro-VNAV systems, procedure NA below -1°C or above 54°C. For inop ALS, increase RNP 0.30 all Cats visibility to RVR 6000.			

D-ATIS 127.55	NEW ORLEANS APP CON WEST 125.5 350.35 EAST 133.15 290.3	NEW ORLEANS TOWER 119.5 254.3	GND CON 121.9 273.525	CLNC DEL 120.925	CPDLC
-------------------------	---	---	---------------------------------	----------------------------	-------



CATEGORY	A	B	C	D
RNP 0.11 DA		363/40	364 (400-¾)	
RNP 0.30 DA		414/50	415 (500-1)	

AUTHORIZATION REQUIRED

SC-4, 11 JUL 2024 to 08 AUG 2024

SC-4, 11 JUL 2024 to 08 AUG 2024