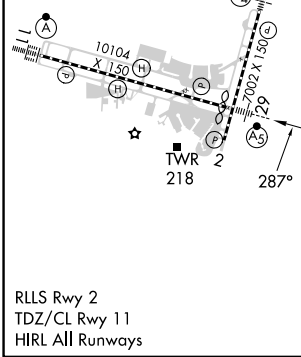
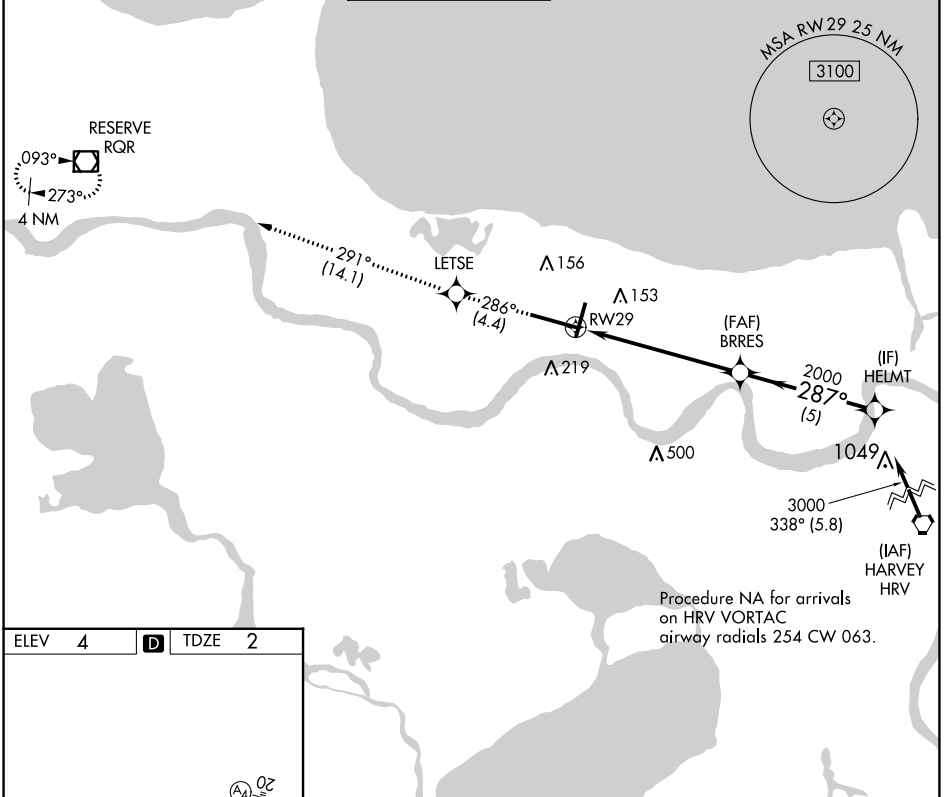


APP CRS	Rwy Idg	<b>9800</b>
<b>287°</b>	TDZE	<b>2</b>
	Apt Elev	<b>4</b>

# RNAV (RNP) Z RWY 29

LOUIS ARMSTRONG NEW ORLEANS INTL (MSY)

<p>▼ For uncompensated Baro-VNAV systems, procedure NA below -1°C (31°F) or above 54°C (130°F). GPS Required.</p>		<p>MALSRL</p>	<p>MISSED APPROACH: Climb to 3000 on track 286° to LETSE and on track 291° to RQR VOR/DME and hold.</p>		
D-ATIS	NEW ORLEANS APP CON	NEW ORLEANS TOWER	GND CON	CLNC DEL	CPDLC
<b>127.55</b>	WEST <b>125.5 350.35</b> EAST <b>133.15 290.3</b>	<b>119.5 254.3</b>	<b>121.9 273.525</b>	<b>120.925</b>	



ELEV 4	<b>D</b>	TDZE 2			
3000	↑	tr 286°	LETSE	tr 291°	RQR
<p>VGSI and RNAV glidepath not coincident (VGSI Angle 3.00/TCH 68).</p>					
		RW29		BRRES	HELMT
		2000		2000	3000
		6.1 NM		5 NM	
		GP 3.00°		TCH 53	
CATEGORY	A	B	C	D	
RNP 0.30 DA	382/40		380 (400-¾)		
<b>AUTHORIZATION REQUIRED</b>					

SC-4, 11 JUL 2024 to 08 AUG 2024

SC-4, 11 JUL 2024 to 08 AUG 2024