

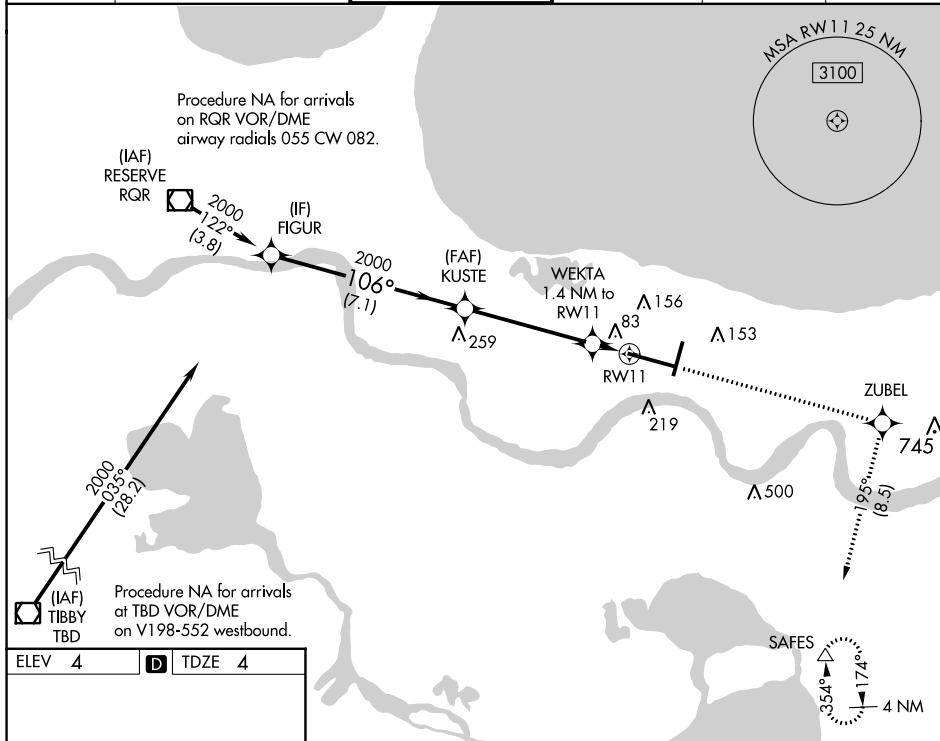
WAAS CH 61319 W11A	APP CRS 106°	Rwy Idg TDZE Apt Elev 9800 4 4
--	------------------------	--

RNAV (GPS) Y RWY 11

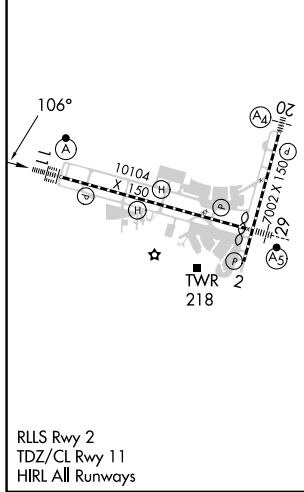
LOUIS ARMSTRONG NEW ORLEANS INTL (MSY)

<p>▼ For uncompensated Baro-VNAV systems, LNAV/VNAV NA below -1°C (31°F) or above 54°C (130°F). DME/DME RNP-0.3 NA. For inop ALSF-2, increase LNAV/VNAV all Cats visibility to RVR 4000.</p>	<p>ALSF-2</p>	<p>MISSED APPROACH: Climb to 2000 direct ZUBEL and on track 195° to SAFES and hold.</p>
---	---------------	---

D-ATIS 127.55	NEW ORLEANS APP CON WEST 125.5 350.35 EAST 133.15 290.3	NEW ORLEANS TOWER 119.5 254.3	GND CON 121.9 273.525	CLNC DEL 120.925	CPDLC
-------------------------	---	---	---------------------------------	----------------------------	-------



ELEV 4	D	TDZE 4
--------	----------	--------



	FIGUR	KUSTE	ZUBEL	SAFES
	2000	2000	2000	tr 195°
	106°			
		WEKTA 1.4 NM to RW11		
				*LNAV only.
GP 3.00°				
TCH 55				
	7.1 NM	4.7 NM	1.4 NM	
CATEGORY	A	B	C	D
LPV DA		204/18	200 (200-½)	
LNAV/VNAV DA		254/24	250 (300-½)	
LNAV MDA	340/24	336 (400-½)	340/26	336 (400-½)
C CIRCLING	520-1	516 (600-1)	580-1½ 576 (600-1½)	600-2 596 (600-2)

SC-4, 11 JUL 2024 to 08 AUG 2024

SC-4, 11 JUL 2024 to 08 AUG 2024