

WAAS CH 49006 W29A	APP CRS 287°	Rwy Idg TDZE Apt Elev	9800 2 4
--	------------------------	-----------------------------	-------------------------------------

RNAV (GPS) Y RWY 29

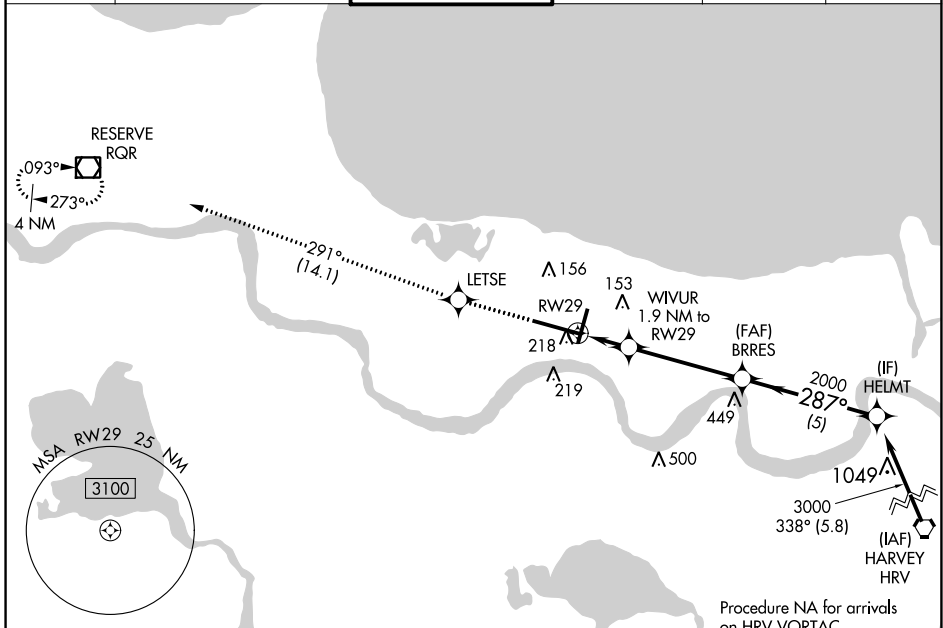
LOUIS ARMSTRONG NEW ORLEANS INTL (MSY)

▼ For uncompensated Baro-VNAV systems, LNAV/VNAV NA below -1°C (31°F) or above 54°C (130°F). DME/DME RNP-0.3 NA. For inop MALS, increase LNAV Cat C/D visibility to 1½ mile.
 **RVR 1800 authorized with use of FD or AP or HUD to DA.

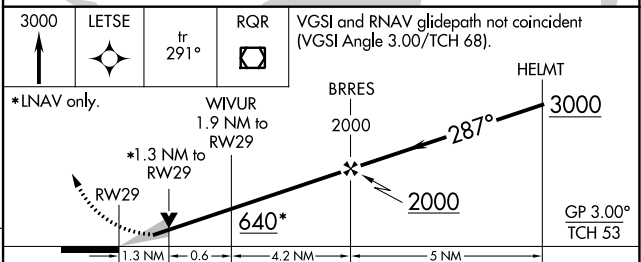
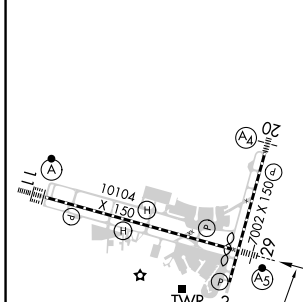


MISSED APPROACH: Climb to 3000 direct LETSE and on track 291° to RQR VOR/DME and hold.

D-ATIS 127.55	NEW ORLEANS APP CON WEST 125.5 350.35 EAST 133.15 290.3	NEW ORLEANS TOWER 119.5 254.3	GND CON 121.9 273.525	CLNC DEL 120.925	CPDLC
-------------------------	---	--	---------------------------------	----------------------------	-------



ELEV 4	D	TDZE 2
--------	----------	--------



CATEGORY	A	B	C	D
LPV DA**		202/24	200 (200-½)	
LNAV/VNAV DA		380/40	378 (400-¾)	
LNAV MDA	480/24	478 (500-½)	480/50	478 (500-1)
C CIRCLING	520-1	516 (600-1)	580-1½ 576 (600-1½)	600-2 596 (600-2)

RLS Rwy 2
TDZ/CL Rwy 11
HIRL All Runways

SC-4, 11 JUL 2024 to 08 AUG 2024

SC-4, 11 JUL 2024 to 08 AUG 2024