

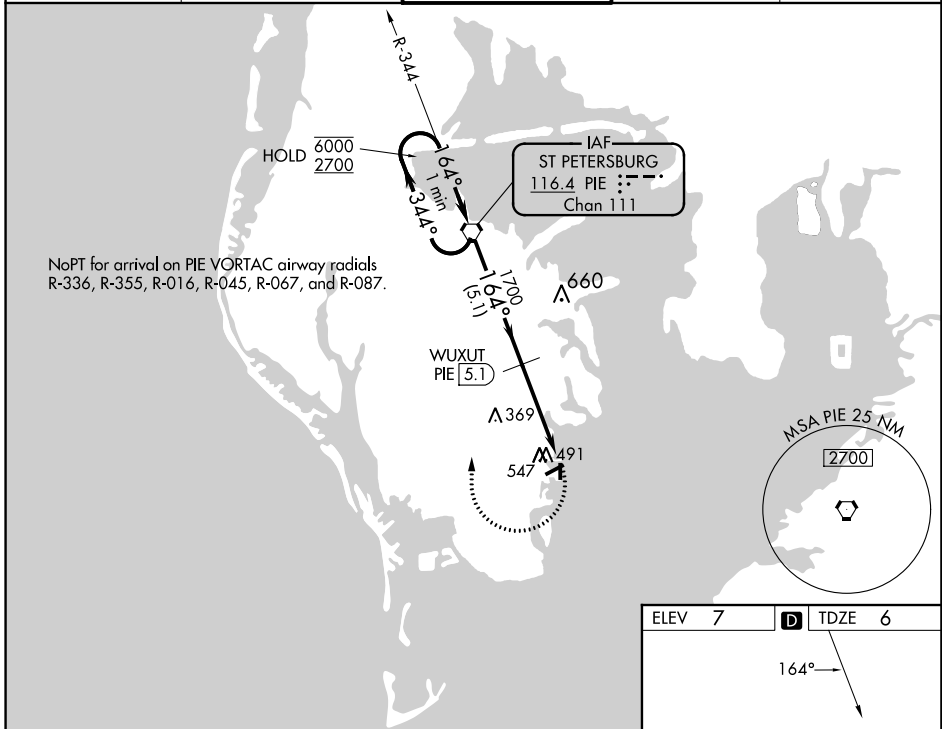
VORTAC PIE 116.4 Chan 111	APP CRS 164°	Rwy Idg TDZE Apt Elev	2674 6 7
---	------------------------	-----------------------------	-------------------------------------

VOR RWY 18

ALBERT WHITTED (SPG)

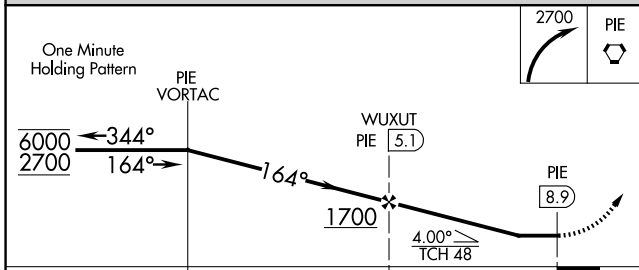
DME required.		MISSED APPROACH: Climbing right turn to 2700 direct PIE VORTAC and hold, continue climb-in-hold to 2700.	
<p>▽ Circling NA northwest of Rwy 7 and 18. Procedure NA at night. ▲ Rwy 18 helicopter visibility reduction below 1 SM NA.</p>			

ASOS 118.875	TAMPA APP CON 119.65 316.05 (EAST) 125.3 316.05 (WEST)	WHITTED TOWER ★ 127.4 (CTAF) 0 257.6	GND CON 121.8	UNICOM 122.95
------------------------	--	--	-------------------------	-------------------------

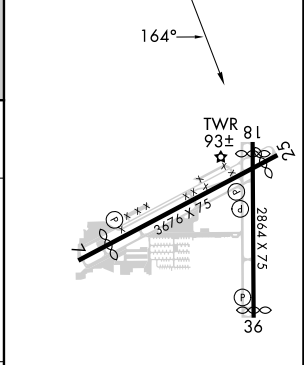


SE-3, 11 JUL 2024 to 08 AUG 2024

SE-3, 11 JUL 2024 to 08 AUG 2024



ELEV 7	D TDZE 6
--------	-----------------



CATEGORY	A	B	C	D
S-18	800-1 794 (800-1)	800-1¼ 794 (800-1¼)		NA
C CIRCLING	800-1 793 (800-1)	800-1¼ 793 (800-1¼)		NA

MIRL Rwy 7-25 and 18-36
REIL Rwy 7, 18, 25 and 36