

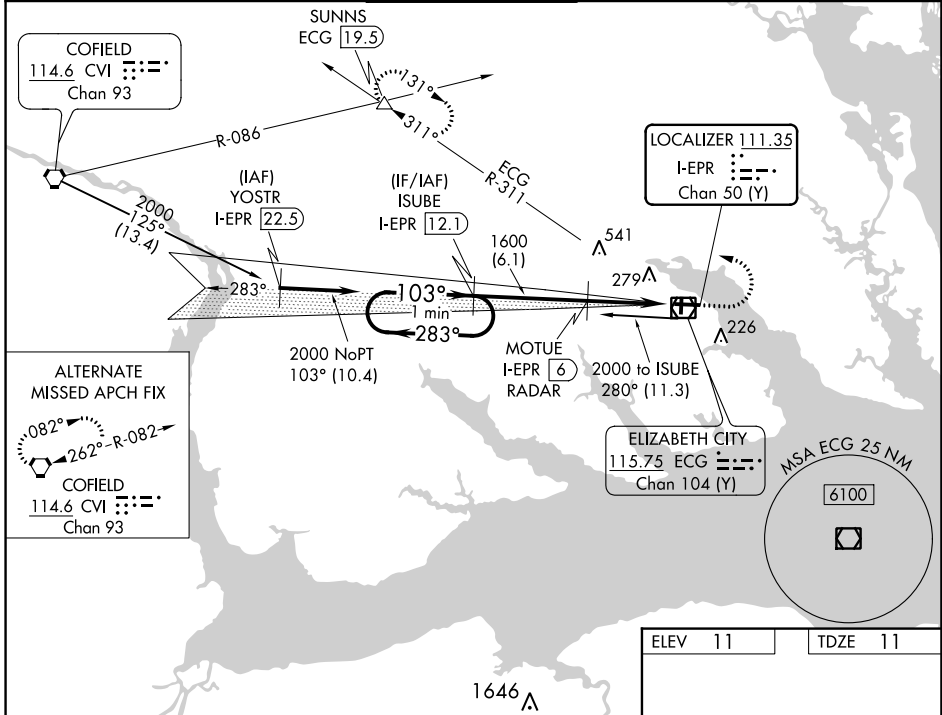
| | | |
|--|------------------------|---|
| LOC/DME I-EPR 111.35 Chan 50 (Y) | APP CRS 103° | Rwy Idg 7219 TDZE 11 Apt Elev 11 |
|--|------------------------|---|

ILS or LOC RWY 10

ELIZABETH CITY CG AIR STATION/RGNL (ECG)

| | | | |
|---|--|------|---|
| DME required. | | SALS | MISSED APPROACH: Climb to 500 then climbing left turn to 3000 on heading 281° and ECG VOR/DME R-311 to SUNNS INT/ECG 19.5 DME and hold. |
| <p>Procedure NA when tethered balloon located approximately 2 miles southeast of airport is flying.</p> | | | |

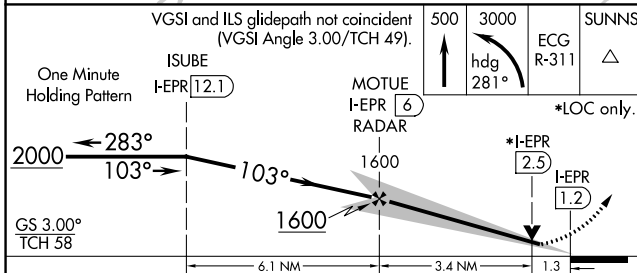
| | | | | |
|------------------------|--|---|-------------------------|-------------------------|
| ASOS 124.375 | NORFOLK APP CON 119.55 269.425 | ELIZABETH CITY TOWER ★ 120.5 (CTAF) 355.6 | GND CON 121.9 | UNICOM 122.95 |
|------------------------|--|---|-------------------------|-------------------------|



ALTERNATE MISSED APCH FIX

082° 262° R-082

COFIELD 114.6 CVI Chan 93



| | |
|---|--------------------------|
| ELEV 11 | TDZE 11 |
| | |
| MRL Rwy 1-19 HIRL Rwy 10-28 REIL Rwys 10 and 28 | |
| FAF to MAP 4.7 NM | |
| Knots | 60 90 120 150 180 |
| Min:Sec | 4:42 3:08 2:21 1:53 1:34 |

| CATEGORY | A | B | C | D |
|----------|-------------------|---|---|---|
| S-ILS 10 | 261-3/4 | | 250 (300-3/4) | |
| S-LOC 10 | 460-1 449 (500-1) | | 460-13/8 449 (500-13/8) | |
| CIRCLING | 480-1 469 (500-1) | | 640-13/8 629 (700-13/8) 640-2 629 (700-2) | |

SE-2, 11 JUL 2024 to 08 AUG 2024

SE-2, 11 JUL 2024 to 08 AUG 2024