

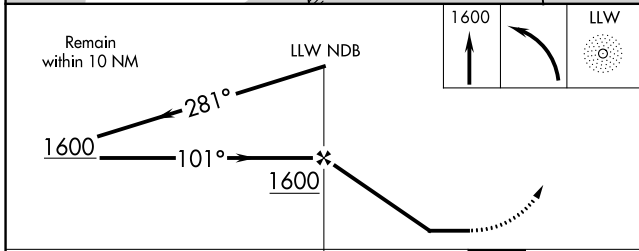
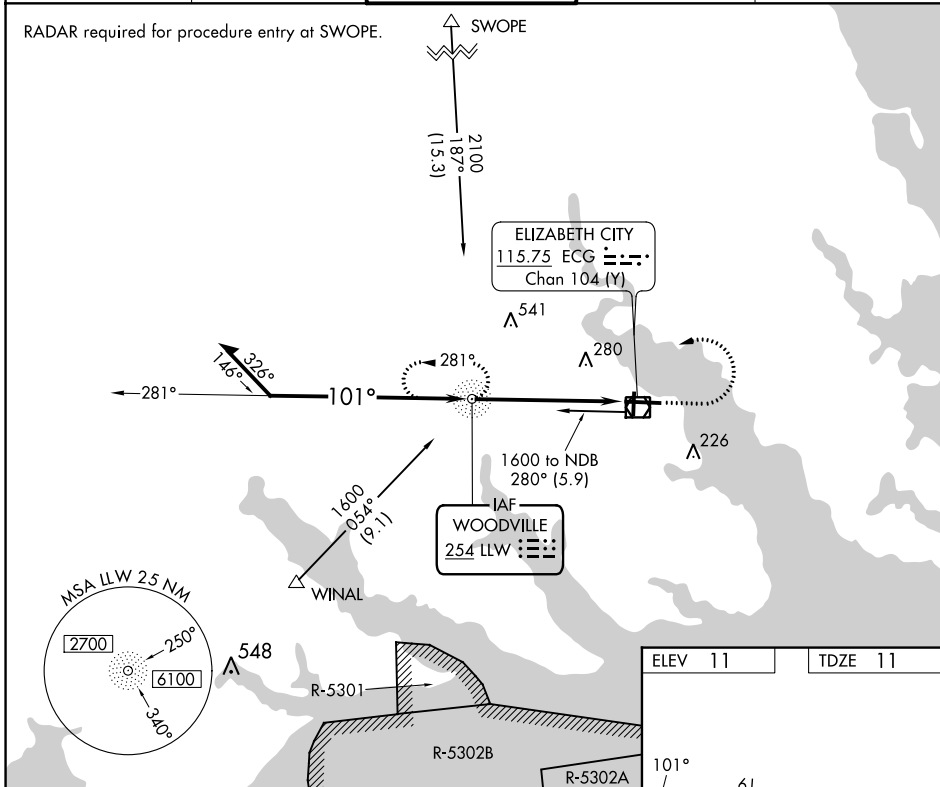
NDB LLW 254	APP CRS 101°	Rwy Idg 7219 TDZE 11 Apt Elev 11
-----------------------	------------------------	---

NDB RWY 10

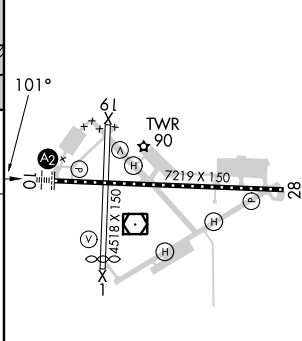
ELIZABETH CITY CG AIR STATION/RGNL (E/C/G)

	Procedure not authorized when tethered balloon located approximately 2 miles southeast of airport is flying. When local altimeter setting not received, use Currituck altimeter setting and increase all MDA 40 feet.	SALS 	MISSED APPROACH: Climb to 1600 then left turn direct LLW NDB and hold.
	Procedure not authorized when tethered balloon located approximately 2 miles southeast of airport is flying. When local altimeter setting not received, use Currituck altimeter setting and increase all MDA 40 feet.		

ASOS 124.375	NORFOLK APP CON 119.55 269.425	ELIZABETH CITY TOWER* 120.5 (CTAF) 355.6	GND CON 121.9	UNICOM 122.95
------------------------	--	--	-------------------------	-------------------------



ELEV 11	TDZE 11
---------	---------



CATEGORY	A	B	C	D
S-10	640-1 629 (700-1)		640-1 ³ / ₄ 629 (700-1 ³ / ₄)	640-2 629 (700-2)
CIRCLING	640-1 629 (700-1)		640-1 ³ / ₄ 629 (700-1 ³ / ₄)	640-2 629 (700-2)

MIRL Rwy 1-19				
HIRL Rwy 10-28				
REIL Rwy 10 and 28				
FAF to MAP 5.5 NM				
Knots	60	90	120	150 180
Min:Sec	5:30	3:40	2:45	2:12 1:50

NDB RWY 10

SE-2, 11 JUL 2024 to 08 AUG 2024

SE-2, 11 JUL 2024 to 08 AUG 2024