

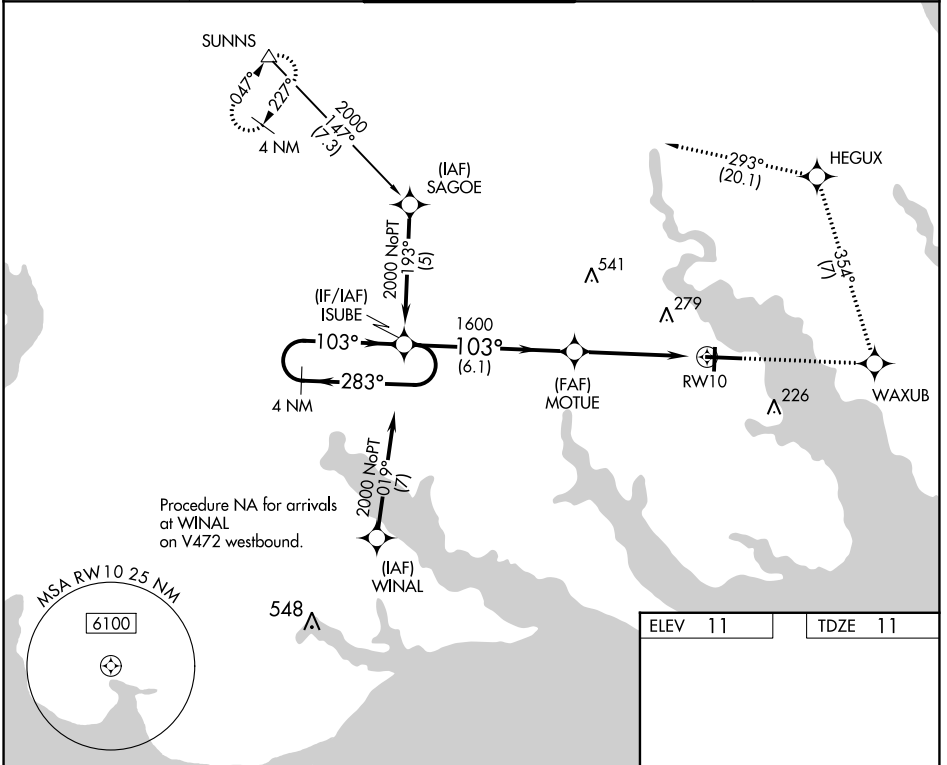
WAAS CH 65703 W10A	APP CRS 103°	Rwy Idg 7219 TDZE 11 Apt Elev 11
--	------------------------	---

RNAV (GPS) RWY 10

ELIZABETH CITY CG AIR STATION/RGNL (ECG)

RNP APCH. ▼ Procedure NA when tethered balloon located approximately 2 miles southeast of airport is flying.	SALS A2	MISSED APPROACH: Climb to 2000 direct WAXUB and left turn on track 354° to HEGUX and 2000 on track 293° to SUNNS and hold.
---	------------	--

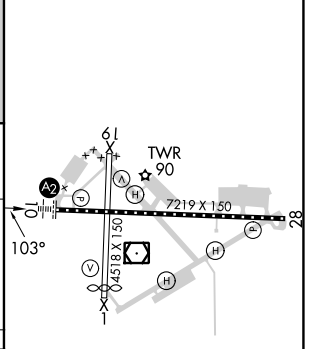
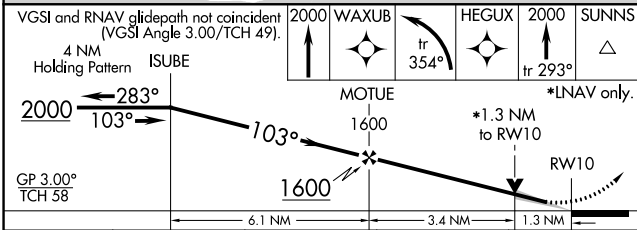
ASOS 124.375	NORFOLK APP CON 119.55 269.425	ELIZABETH CITY TOWER★ 120.5 (CTAF) 355.6	GND CON 121.9	UNICOM 122.95
------------------------	--	--	-------------------------	-------------------------



SE-2, 11 JUL 2024 to 08 AUG 2024

SE-2, 11 JUL 2024 to 08 AUG 2024

ELEV 11	TDZE 11
---------	---------



VGSI and RNAV glidepath not coincident (VGSI Angle 3.00/TCH 49).	2000 WAXUB	HEGUX	2000 SUNNS	
4 NM Holding Pattern ISUBE	↑	tr 354°	↑ tr 293°	
2000 ← 283°	← 103°	← 103°	← 103°	
GP 3.00° TCH 58	1600	1600	1600	
	6.1 NM	3.4 NM	1.3 NM	
CATEGORY	A	B	C	D
LPV DA	261-3/4		250 (300-3/4)	
LNNAV MDA	460-1	449 (500-1)	460-1 3/8	449 (500-1 3/8)
CIRCLING	480-1	469 (500-1)	640-1 3/4	640-2
			629 (700-1 3/4)	629 (700-2)

MIRL Rwy 1-19
HIRL Rwy 10-28
REIL Rws 10 and 28