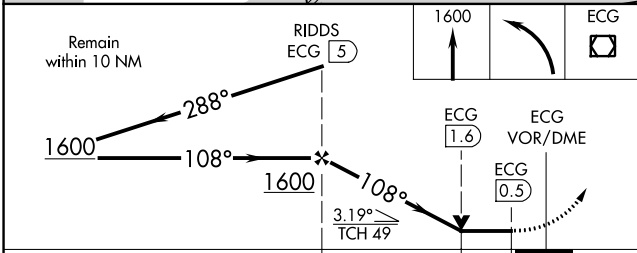
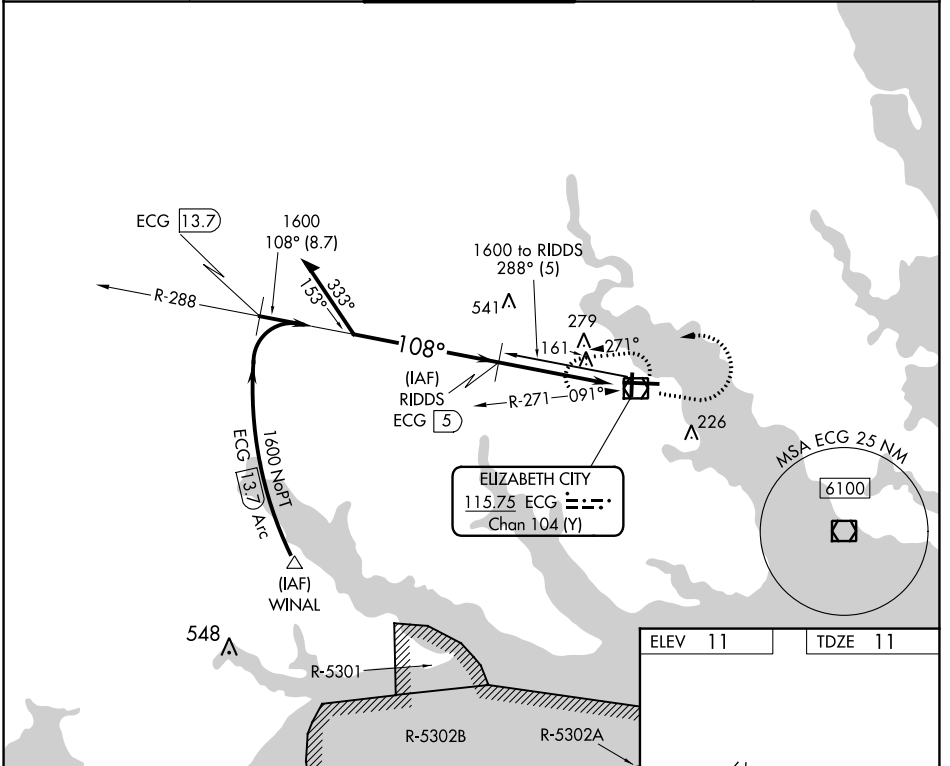


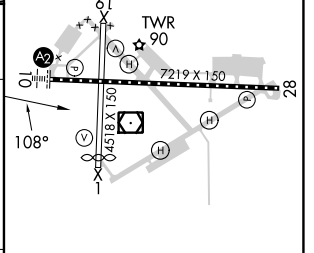
VOR/DME ECG <b>115.75</b> Chan <b>104</b> (Y)	APP CRS <b>108°</b>	Rwy Idg <b>7219</b> TDZE <b>11</b> Apt Elev <b>11</b>
---	------------------------	---

VOR/DME RWY 10  
ELIZABETH CITY CG AIR STATION/RGNL (ECG)

<p><b>⚠</b> Procedure NA when tethered balloon located approximately 2 miles southeast of airport is flying. When local altimeter setting not received, use Currituck altimeter setting and increase all MDAs 40 feet and increase S-10 visibility Cats C/D 1/8 SM.</p>	SALS <b>A2</b>	MISSED APPROACH: Climb to 1600 then left turn direct ECG VOR/DME and hold.		
	ASOS <b>124.375</b>	NORFOLK APP CON <b>119.55 269,425</b>	ELIZABETH CITY TOWER ★ <b>120.5</b> (CTAF) <b>355.6</b>	GND CON <b>121.9</b>



ELEV 11	TDZE 11
---------	---------



CATEGORY	A	B	C	D
S-10	540-1	529 (600-1)	540-1 1/4	529 (600-1 1/4)
<b>C</b> CIRCLING	540-1	529 (600-1)	640-1 3/4	640-2
			629 (700-1 3/4)	629 (700-2)

MIRL Rwy 1-19  
HIRL Rwy 10-28  
REL Rwys 10 and 28

SE-2, 11 JUL 2024 to 08 AUG 2024

SE-2, 11 JUL 2024 to 08 AUG 2024