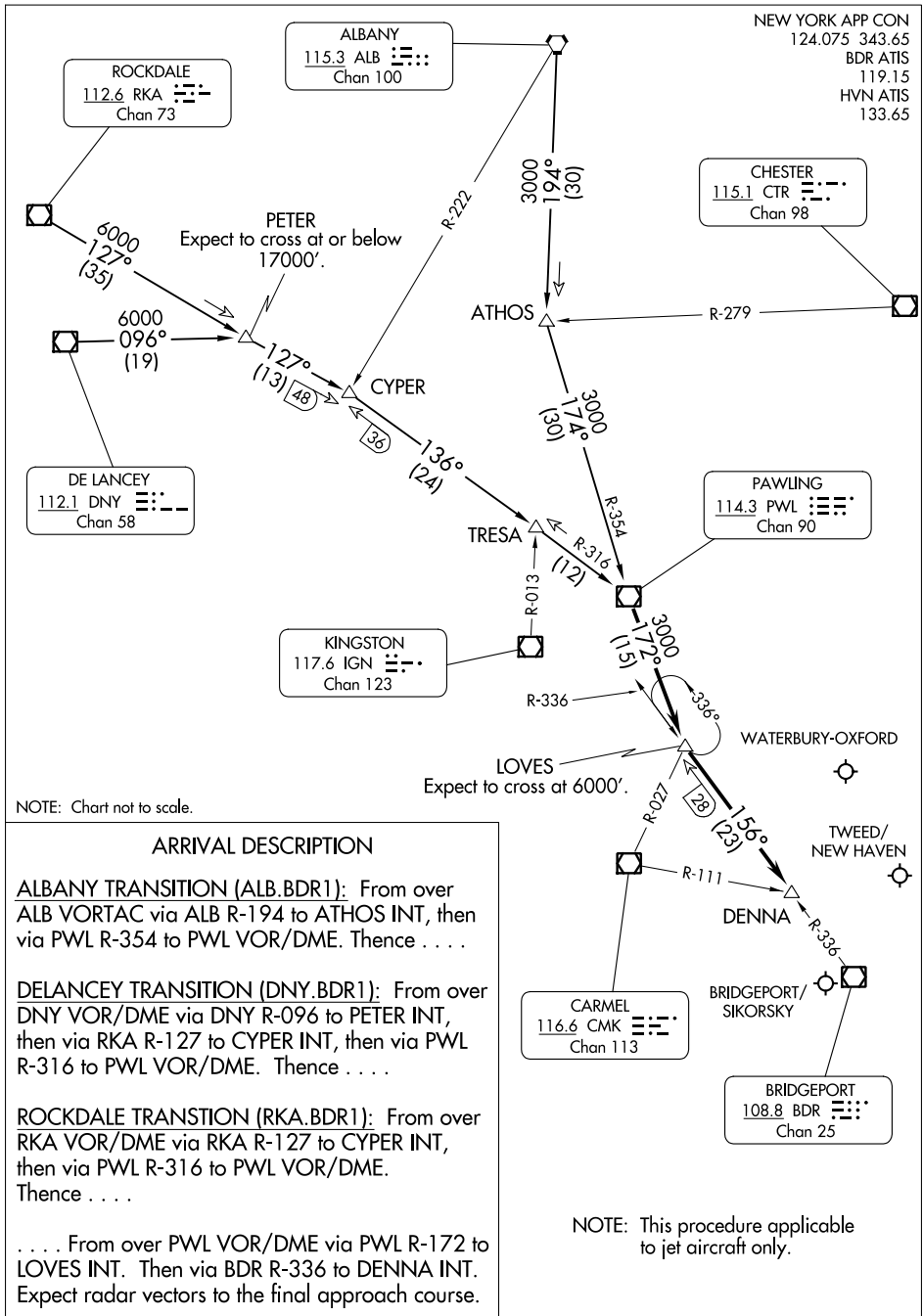


BRIDGEPORT ONE ARRIVAL

AL-621 (FAA)

BRIDGEPORT, CONNECTICUT



NE-1, 11 JUL 2024 to 08 AUG 2024

NE-1, 11 JUL 2024 to 08 AUG 2024

NOTE: Chart not to scale.

ARRIVAL DESCRIPTION

ALBANY TRANSITION (ALB.BDR1): From over ALB VORTAC via ALB R-194 to ATHOS INT, then via PWL R-354 to PWL VOR/DME. Thence

DELANCEY TRANSITION (DNY.BDR1): From over DNY VOR/DME via DNY R-096 to PETER INT, then via RKA R-127 to CYPER INT, then via PWL R-316 to PWL VOR/DME. Thence

ROCKDALE TRANSITION (RKA.BDR1): From over RKA VOR/DME via RKA R-127 to CYPER INT, then via PWL R-316 to PWL VOR/DME. Thence

. . . . From over PWL VOR/DME via PWL R-172 to LOVES INT. Then via BDR R-336 to DENNA INT. Expect radar vectors to the final approach course.

NOTE: This procedure applicable to jet aircraft only.

BRIDGEPORT ONE ARRIVAL

BRIDGEPORT, CONNECTICUT