

LOC/DME I-ULJ 111.15 Chan 48(Y)	APP CRS 293°	Rwy Idg 7011 TDZE 128 Apt Elev 132
---	------------------------	---

ILS or LOC RWY 29

LAURENCE G HANSCOM FLD (BED)

RADAR required for procedure entry. DME or RADAR required.

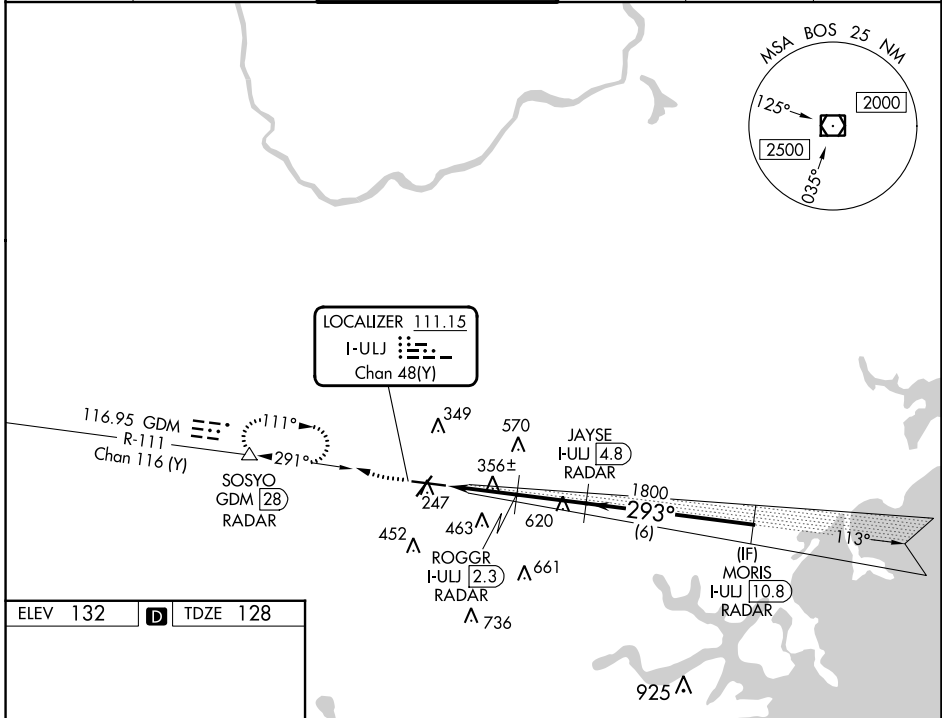
For inop ALS, increase S-LOC 29 Cats C and D to 1½ SM.

MALSR



MISSED APPROACH: Climb to 1000 then climbing right turn to 2000 on GDM VOR/DME R-111 to SOSYO/GDM 28 DME/RADAR and hold.

ATIS 124.6	BOSTON APP CON 124.4 279.6	HANSCOM TOWER ★ 118.5 (CTAF) 0 257.2	GND CON 121.7	CLNC DEL 121.85	UNICOM 122.95
----------------------	--------------------------------------	--	-------------------------	---------------------------	-------------------------



ELEV 132	D	TDZE 128
----------	----------	----------

MIRL Rwy 5-23 **1**
HIRL Rwy 11-29 **1**
REIL Rwys 5 and 23 **1**

FAF to MAP 5.1 NM

Knots	60	90	120	150	180
Min:Sec	5:06	3:24	2:33	2:02	1:42

	1000	2000	SOSYO	JAYSE	MORIS
	GDM	GDM	△	I-ULJ [4.8]	I-ULJ [10.8]
	R-111	R-111		RADAR	RADAR
*LOC only.	I-ULJ DME ANTENNA	*I-ULJ	ROGGR		
	I-ULJ [0.3]	I-ULJ [1.1]	I-ULJ [2.3]	1800	1800
			RADAR		
				1000*	1800
					GS 3.00°
					TCH 55
	1.4 NM	1.2 NM	2.5 NM	6 NM	
CATEGORY	A		B		C
S-ILS 29	328-½		200 (200-½)		
S-LOC 29	620-½ 492 (500-½)		620-1 492 (500-1)		
C CIRCLING	720-1 588 (600-1)		880-2¼ 748 (800-2¼)		920-2½ 788 (800-2½)

NE-1, 11 JUL 2024 to 08 AUG 2024

NE-1, 11 JUL 2024 to 08 AUG 2024