

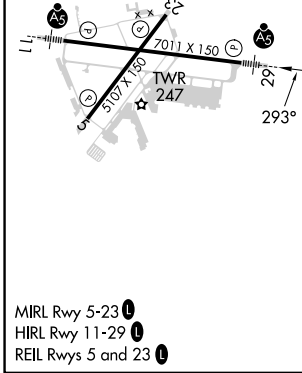
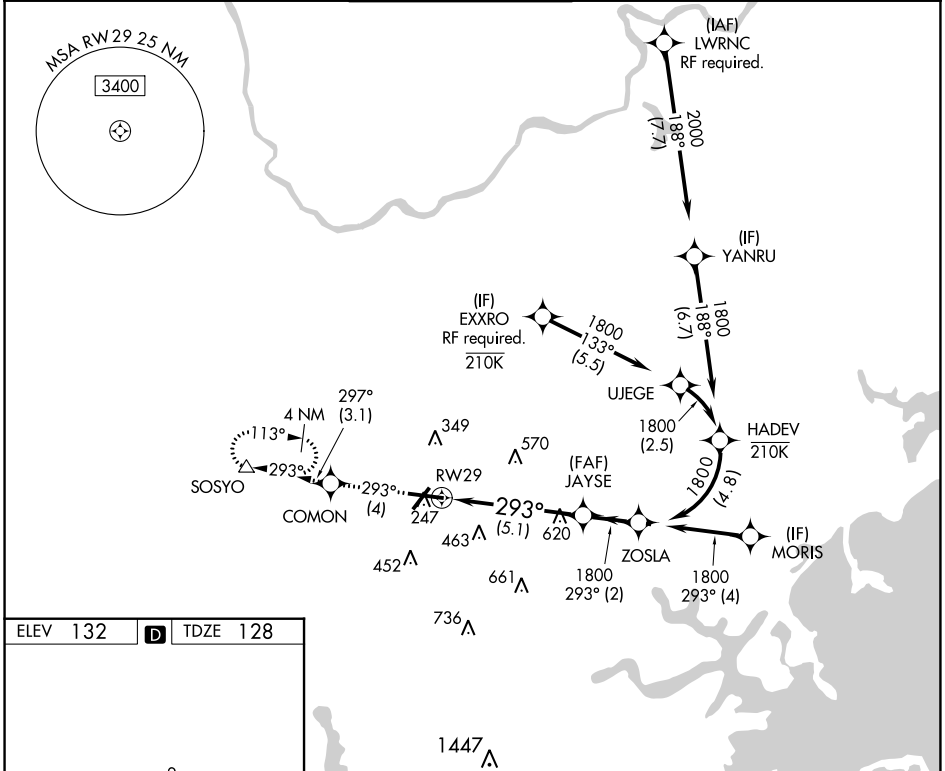
APP CRS	Rwy Idg	7011
293°	TDZE	128
	Apt Elev	132

RNAV (RNP) Y RWY 29

LAURENCE G HANSCOM FLD (BED)

RNP AR APCH.		MALSR	MISSED APPROACH: Climb to 2000 on track 293° to COMON then on track 297° to SOSYO and hold.		
For uncompensated Baro-VNAV systems, procedure NA below -19°C or above 54°C.					

ATIS	BOSTON APP CON	HANSCOM TOWER*	GND CON	CLNC DEL	UNICOM
124.6	124.4 279.6	118.5 (CTAF) 0 257.2	121.7	121.85	122.95



2000	↑	fr 293°	COMON	fr 297°	SOSYO	See planview for multiple IF locations.
			JAYSE	ZOSLA		
			1800	293°	1800	
			RWY 29	1800		GP 3.00° TCH 55
			-5.1 NM		-2 NM	
CATEGORY		A	B	C	D	
RNP 0.30 DA		651-1		523 (600-1)		
AUTHORIZATION REQUIRED						

NE-1, 11 JUL 2024 to 08 AUG 2024

NE-1, 11 JUL 2024 to 08 AUG 2024