

WAAS CH 58217 W02A	APP CRS 020°	Rwy Idg TDZE Apt Elev	5001 449 469
--	------------------------	-----------------------------	---

RNAV (GPS) RWY 2

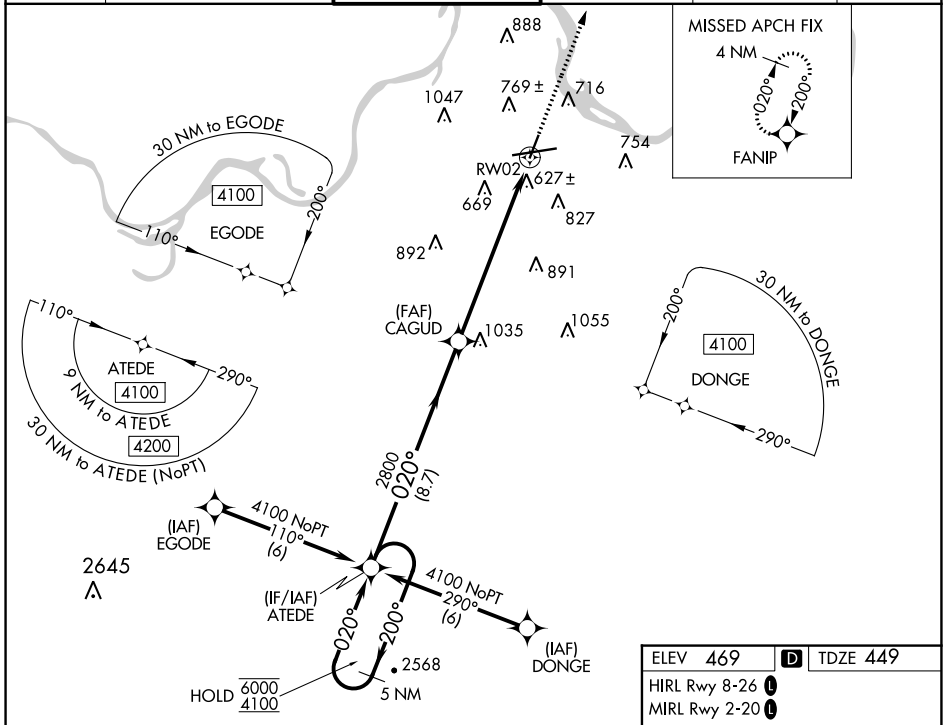
FORT SMITH RGNL (FSM)

RNP APCH - GPS.

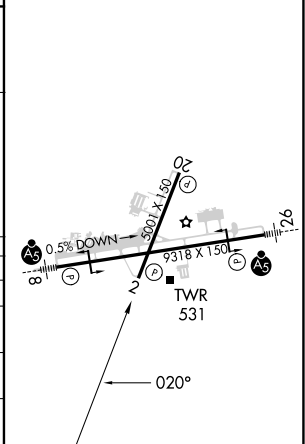
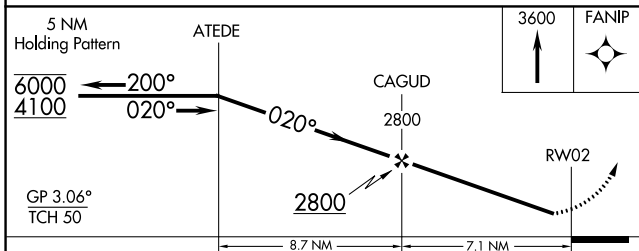
⚠ Circling to Rwy 20 and 26 NA at night. Rwy 2 helicopter visibility reduction below 3/4 SM NA. For uncompensated Baro-VNAV systems, LNAV/VNAV NA below -15°C or ASR above 54°C.

MISSED APPROACH: Climb to 3600 direct FANIP and hold, continue climb-in-hold to 3600.

ATIS 124.775	RAZORBACK APP CON * 120.9 343.75	FORT SMITH TOWER * 118.3 (CTAF) 323.175	GND CON 121.9 275.8	CLNC DEL 133.85 278.3	UNICOM 122.95
------------------------	--	---	-------------------------------	---------------------------------	-------------------------



ELEV 469	D TDZE 449
HIRL Rwy 8-26 1	
MIRL Rwy 2-20 1	



CATEGORY	A	B	C	D
LPV DA		705-1	256 (300-1)	
LNAV/VNAV DA		942-1 3/4	493 (500-1 3/4)	
LNAV MDA	1160-1 711 (700-1)		1160-2 711 (700-2)	1160-2 1/4 711 (700-2 1/4)
C CIRCLING	1160-1 691 (700-1)		1400-2 3/4 931 (1000-2 3/4)	1400-3 931 (1000-3)

SC-1, 11 JUL 2024 to 08 AUG 2024

SC-1, 11 JUL 2024 to 08 AUG 2024