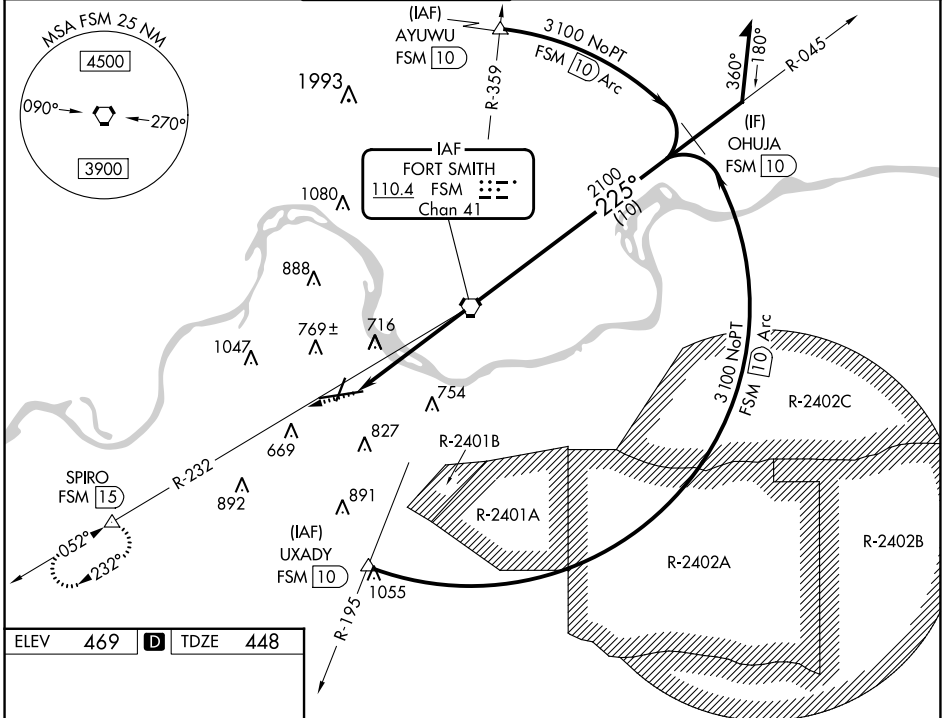


VORTAC FSM	APP CRS	Rwy Idg	9318
110.4	225°	TDZE	448
Chan 41		Apt Elev	469

# VOR Z or TACAN Z RWY 26

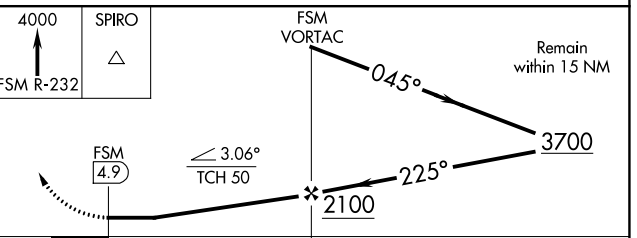
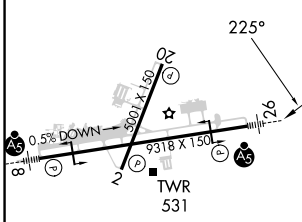
FORT SMITH RGNL (FSM)

DME required.		MALSR		MISSED APPROACH: Climb to 4000 on FSM VORTAC R-232 to SPIRO/15 DME and hold, continue climb-in-hold to 4000.	
<p>▼ Rwy 26 helicopter visibility reduction below RVR 5000 NA. Inop table does not apply.</p> <p>▲ Circling Cat E NA when R-2401B active. Arc segment R-195 CCW: NA when restricted areas R-2401 and R-2402 in effect. Circling NA for Cat E northwest of Rwy 8 and Rwy 20. Straight-in Rwy 26 NA at night, Circling Rwy 20, 26 NA at night.</p>					
ATIS	RAZORBACK APP CON*	FORT SMITH TOWER*	GND CON	CLNC DEL	UNICOM
124.775	120.9 343.75	118.3(CTAF) 323.175	121.9 275.8	133.85 278.3	122.95



ELEV	469	D	TDZE	448
------	-----	---	------	-----

Procedure NA for arrival on FSM VORTAC airway radials 036 CW 090.



CATEGORY	A	B	C	D	E
S-26	980/55	532 (600-1)	980-1½	532 (600-1½)	
<input checked="" type="checkbox"/> CIRCLING	1140-1	671 (700-1)	1400-2¾	931 (1000-2¾)	1400-3 931 (1000-3)

SC-1, 11 JUL 2024 to 08 AUG 2024

SC-1, 11 JUL 2024 to 08 AUG 2024