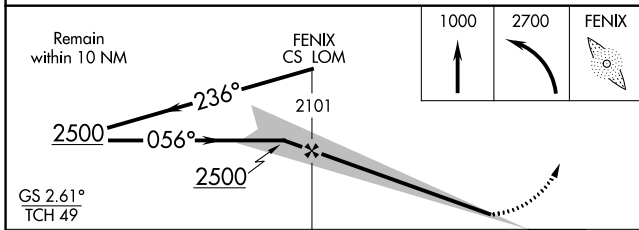
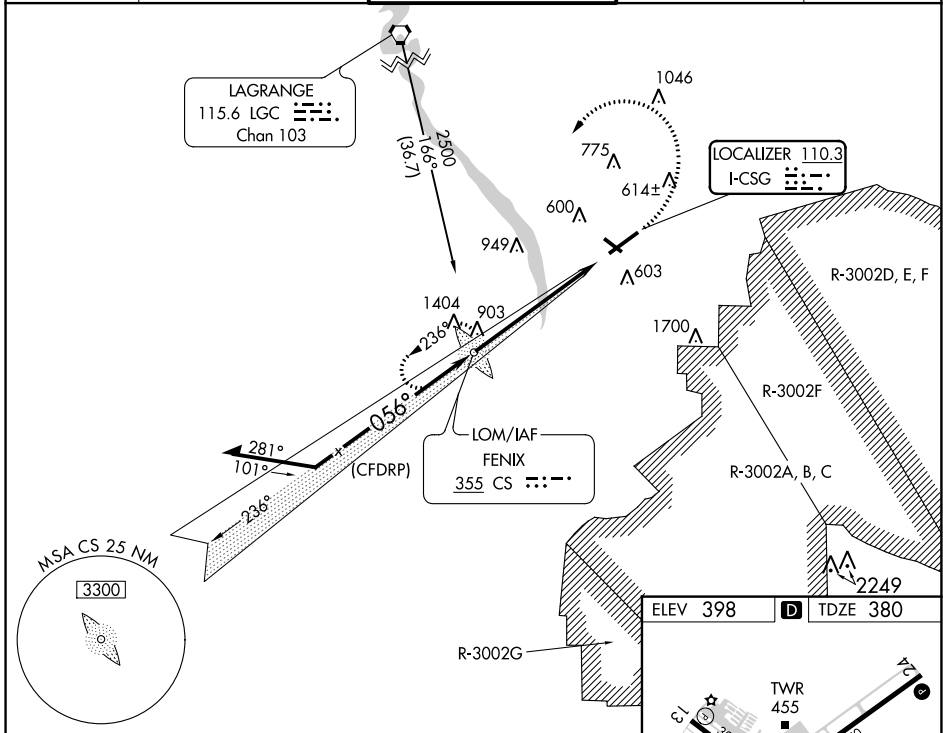


| | | |
|---------------------------|------------------------|------------------------|
| LOC I-CSG 110.3 | APP CRS 056° | Rwy Idg 6997 |
| | | TDZE 380 |
| | | Apt Elev 398 |

ILS or LOC RWY 6

COLUMBUS (CSG)

| | | | | |
|--|---|---|--|-------------------------------|
| ADF or RADAR required. | | | MISSED APPROACH: Climb to 1000, then climbing left turn to 2700 direct FENIX LOM and hold, continue climb-in-hold to 2700. | |
| Circling to Rwy 13, 24 and 31 NA at night. Autopilot coupled approach NA below 900. Rwy 6 helicopter visibility reduction below 3/4 SM NA. For inop ALS, increase S-ILS 06 all Cats visibility to RVR 4500. For inop ALS, increase S-LOC 06 Cats A and B visibility to RVR 5500 and Cats C and D visibility to 1 1/4 SM. | | | | |
| ATIS 127.75 | ATLANTA APP CON * 125.5 323.1 | COLUMBUS TOWER * 120.1 (CTAF) 257.8 | | GND CON 121.9 348.6 |
| | | | | UNICOM 122.95 |



| | | | | |
|----------|---------|---------------|-------------------------------|------------------------|
| CATEGORY | A | B | C | D |
| S-ILS 6 | | 664/40 | 284 (300-3/4) | |
| S-LOC 6 | 1020/40 | 640 (700-3/4) | 1020-1 3/8 | 640 (700-1 3/8) |
| CIRCLING | 1020-1 | 622 (700-1) | 1140-2 1/4 742 (800-2 1/4) | 1300-3 902 (1000-3) |

| | | | | | |
|-------------------|------|------|------|------|------|
| FAF to MAP 6.1 NM | | | | | |
| Knots | 60 | 90 | 120 | 150 | 180 |
| Min:Sec | 6:06 | 4:04 | 3:03 | 2:26 | 2:02 |

SE-4, 11 JUL 2024 to 08 AUG 2024

SE-4, 11 JUL 2024 to 08 AUG 2024