

APP CRS Rwy Idg **3997**
 TDZE **398**
 Apt Elev **398**

RNAV (GPS) RWY 13

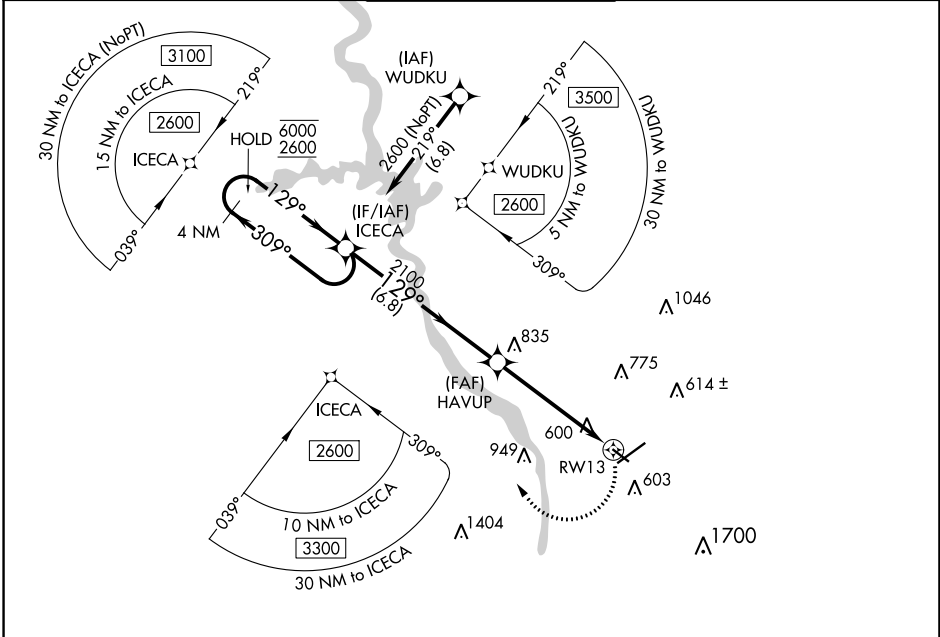
COLUMBUS (CSG)

RNP APCH - GPS.

▼ Circling to Rwy 13, 31 and 24 NA at night. Rwy 13 helicopter visibility reduction below 1 SM NA. Rwy 13 Straight-in minimums NA at night.
▲

MISSED APPROACH: Climbing right turn to 2600 direct ICECA and hold.

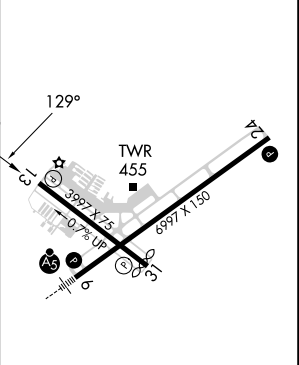
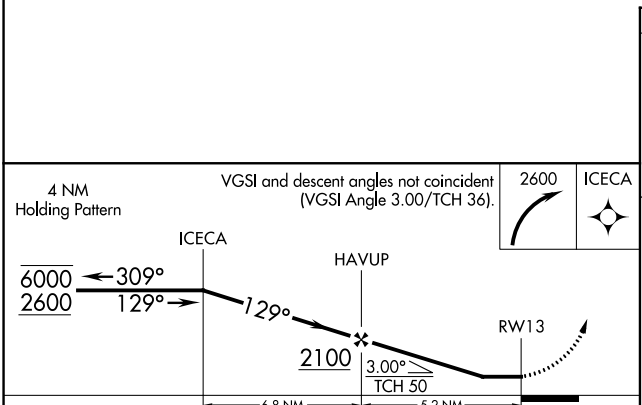
| | | | | |
|-----------------------|---|---|-------------------------------|-------------------------|
| ATIS 127.75 | ATLANTA APP CON * 125.5 323.1 | COLUMBUS TOWER * 120.1 (CTAF) 0 257.8 | GND CON 121.9 348.6 | UNICOM 122.95 |
|-----------------------|---|---|-------------------------------|-------------------------|



SE-4, 11 JUL 2024 to 08 AUG 2024

SE-4, 11 JUL 2024 to 08 AUG 2024

ELEV 398 **D** TDZE 398



| CATEGORY | A | B | C | D |
|-------------------|--------------------|---|----------------------------|---------------------|
| LNVA MDA | 1040-1 642 (700-1) | | 1040-1 7/8 642 (700-1 7/8) | |
| C CIRCLING | 1040-1 642 (700-1) | | 1140-2 1/4 742 (800-2 1/4) | 1300-3 902 (1000-3) |

REIL Rwy 24 **1**
 HIRL Rwy 6-24 **1**
 MIRL Rwy 13-31 **1**
 REIL Rws 13 and 31