

WAAS CH 86234 W22A	APP CRS 223°	Rwy Idg 8748 TDZE 36 Apt Elev 40
--	------------------------	---

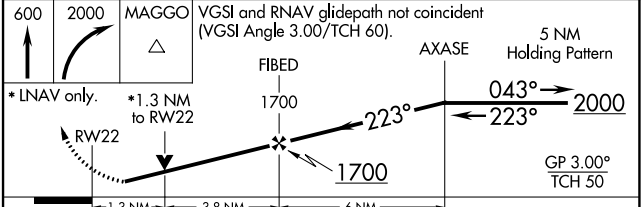
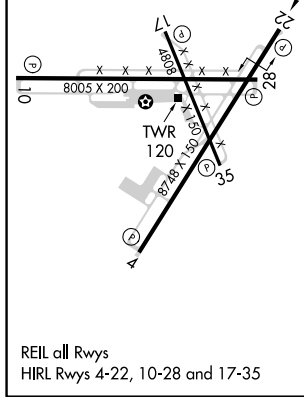
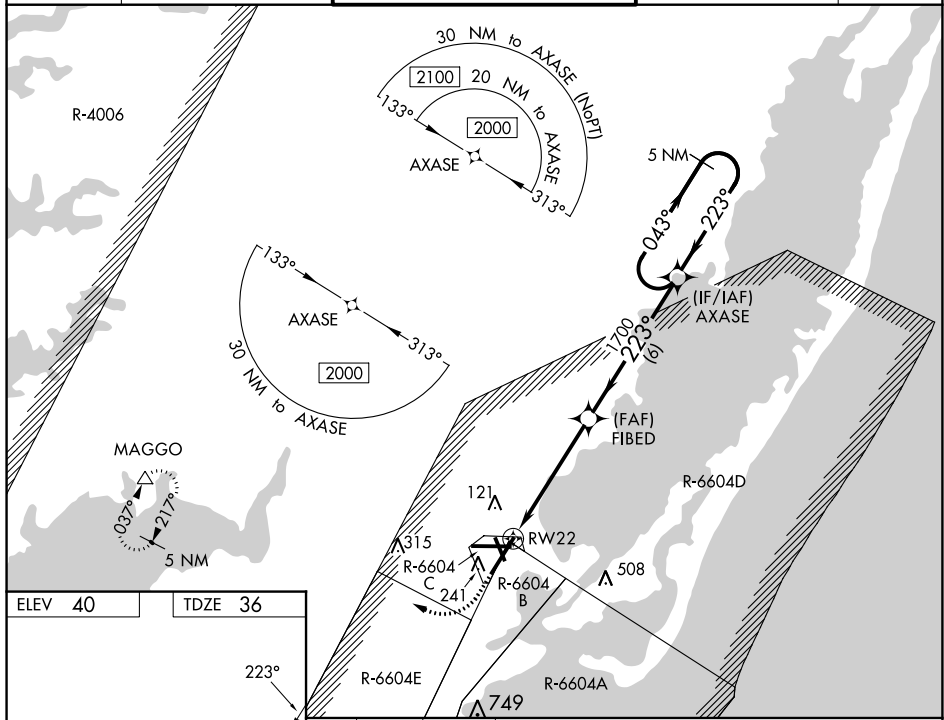
RNAV (GPS) RWY 22

WALLOPS FLIGHT FACILITY (WAL)

▼ For uncompensated Baro-VNAV systems, LNAV/VNAV NA below -11°C (13°F) or above 54°C (130°F). DME/DME-RNP 0.3 NA. Helicopter visibility reduction below ¾ SM NA. When local altimeter setting not received, use Salisbury altimeter setting; increase LPV DA to 367 and all Cats visibility ¼ mile; increase LNAV/VNAV DA to 489 and all Cats visibility ½ mile; increase all MDA 60 feet and LNAV Cats C/D visibility ½ mile and Circling Cat C visibility ¼ mile. Baro-VNAV and VDP NA when using Salisbury altimeter setting.

▲ MISSED APPROACH: Climb to 600 then climbing right turn to 2000 direct MAGGO and hold.

ASOS 119.175	PATUXENT APP CON ★ 127.95 314.0	WALLOPS TOWER ★ 126.5 (CTAF) 0 306.975 (CTAF) 0	GND CON 127.875 269.325	CLNC DEL 121.7
------------------------	---	---	-----------------------------------	--------------------------



CATEGORY	A	B	C	D
LPV DA	314-7/8 278 (300-7/8)			
LNAV/VNAV DA	436-1 400 (400-1 1/2)			
LNAV MDA	500-1	464 (500-1)	500-1 1/2	464 (500-1 1/2)
C CIRCLING	600-1	560 (600-1)	620-1 1/2 580 (600-1 1/2)	860-2 3/4 820 (900-2 3/4)

NE-3, 11 JUL 2024 to 08 AUG 2024

NE-3, 11 JUL 2024 to 08 AUG 2024