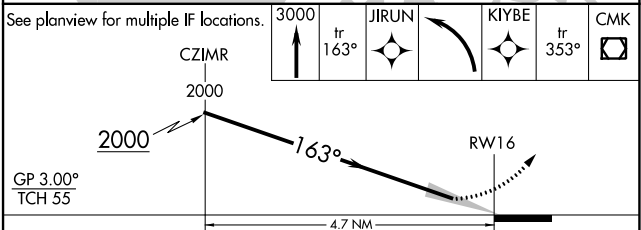
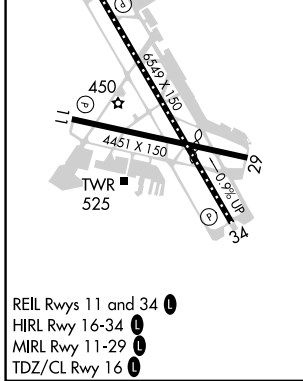
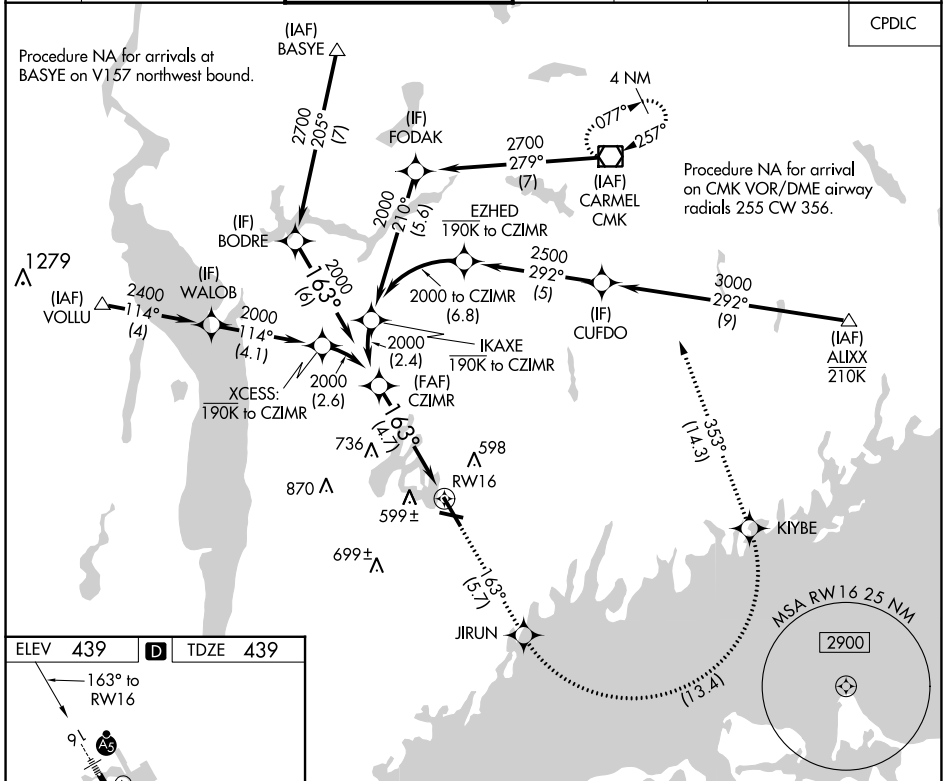


APP CRS	Rwy ldg	6549
163°	TDZE	439
	Apt Elev	439

RNAV (RNP) Z RWY 16

WESTCHESTER COUNTY (HPN)

RNP AR APCH - GPS.		MALSR		MISSED APPROACH: Climb to 3000 on track 163° to JIRUN, left turn to KIYBE, then track 353° to CMK VOR/DME and hold.	
▼ For uncompensated Baro-VNAV systems, procedure NA below -14°C or above 54°C.					
D-ATIS	NEW YORK APP CON	WESTCHESTER TOWER ★	GND CON	CLNC DEL	CLNC DEL
133.8	120.8 126.4 257.65	118.575 (CTAF) 284.65	121.825	127.25	126.4 (when twr closed)
					UNICOM
					122.95



GP 3.00°	TCH 55				
CATEGORY	A	B	C	D	
RNP 0.15 DA		826/35	387 (400-5%)		
RNP 0.30 DA		950/55	511 (600-1)		

AUTHORIZATION REQUIRED

NE-2, 11 JUL 2024 to 08 AUG 2024

NE-2, 11 JUL 2024 to 08 AUG 2024