

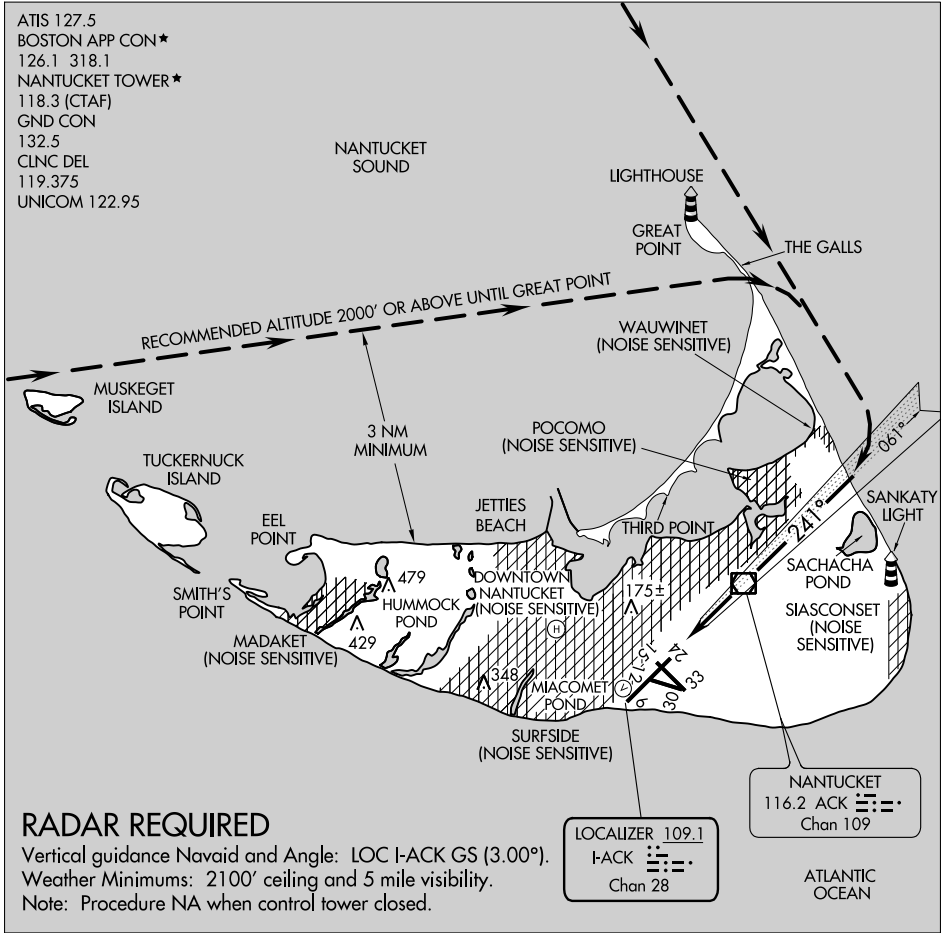
21112

GREAT POINT VISUAL RWY 24

AL-659 (FAA)

NANTUCKET MEML (ACK)
NANTUCKET, MASSACHUSETTS

ATIS 127.5
 BOSTON APP CON ★
 126.1 318.1
 NANTUCKET TOWER ★
 118.3 (CTAF)
 GND CON
 132.5
 CLNC DEL
 119.375
 UNICOM 122.95



NE-1, 11 JUL 2024 to 08 AUG 2024

NE-1, 11 JUL 2024 to 08 AUG 2024

RADAR REQUIRED

Vertical guidance Navaid and Angle: LOC I-ACK GS (3.00°).
 Weather Minimums: 2100' ceiling and 5 mile visibility.
 Note: Procedure NA when control tower closed.

1 NM	2	3	4	5	6	7	8	9	10	11	12	13	14	15
------	---	---	---	---	---	---	---	---	----	----	----	----	----	----

GREAT POINT VISUAL RWY 24

41°15'N-70°04'W

NANTUCKET, MASSACHUSETTS
NANTUCKET MEML (ACK)

Amdt 1 10NOV16