

| | | | |
|--|------------------------|-----------------------------|---------------------------------------|
| WAAS CH 81912 W06A | APP CRS 061° | Rwy Idg TDZE Apt Elev | 5765 38 47 |
|--|------------------------|-----------------------------|---------------------------------------|

RNAV (GPS) RWY 6

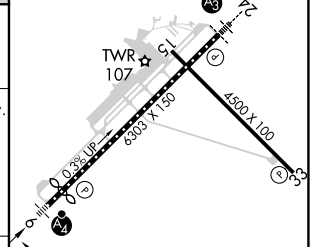
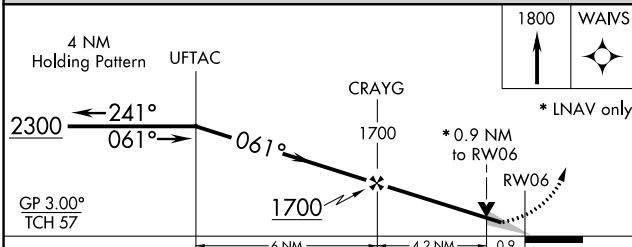
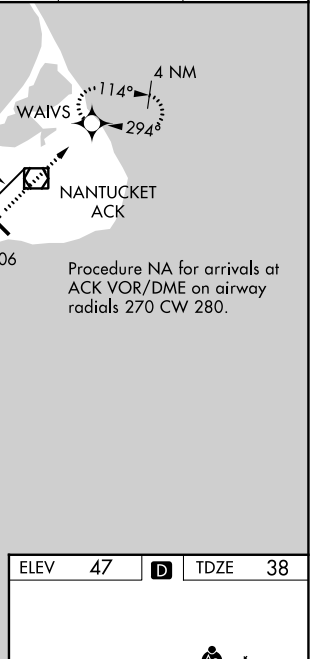
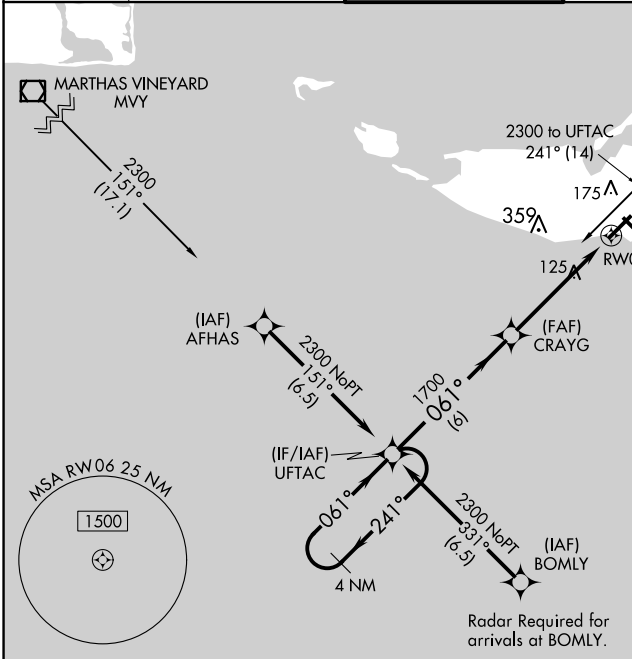
NANTUCKET MEML (ACK)

For uncompensated Baro-VNAV systems, LNAV/VNAV NA below -12°C (11°F) or above 54°C (130°F). DME/DME RNP-0.3 NA. Baro-VNAV and VDP NA when using Hyannis altimeter setting. When local altimeter setting not received, use Hyannis altimeter setting and increase LPV DA to 301, LNAV/VNAV DA to 363 and all MDA 80 feet; increase LNAV Cats C/D visibility to RVR 5000 and Circling Cats C/D visibility ¼ SM. Inoperative table does not apply to LPV. For inoperative ALS increase LNAV/VNAV all Cats visibility to RVR 4500, and LNAV Cat D visibility to RVR 5500. For inoperative ALS when using Hyannis altimeter setting, increase LPV all Cats visibility to RVR 4500, increase LNAV/VNAV all Cats visibility to RVR 6000 and increase LNAV Cats C/D to 1¼ SM.

MALSF

MISSED APPROACH:
Climb to 1800 direct
WAIVS and hold.

| | | | | | |
|----------------------|---------------------------------------|--|-------------------------|----------------------------|-------------------------|
| ATIS 127.5 | BOSTON APP CON* 126.1 318.1 | NANTUCKET TOWER * 118.3 (CTAF) 0 | GND CON 132.5 | CLNC DEL 119.375 | UNICOM 122.95 |
|----------------------|---------------------------------------|--|-------------------------|----------------------------|-------------------------|



| CATEGORY | A | B | C | D |
|--------------|----------------------|----------------------|----------------------|------------------------|
| LPV DA | | 238/40 | 200 (200-¾) | |
| LNAV/VNAV DA | | 300/40 | 262 (300-¾) | |
| LNAV MDA | | 380/40 | 342 (400-¾) | |
| CIRCLING | 480-1 433 (500-1) | 500-1 453 (500-1) | 720-2 673 (700-2) | 720-2¼ 673 (700-2¼) |

TDZ/CL Rwy 24
REIL Rwys 15 and 33
MIRL Rwy 15-33
HIRL Rwy 6-24

NE-1, 11 JUL 2024 to 08 AUG 2024

NE-1, 11 JUL 2024 to 08 AUG 2024