

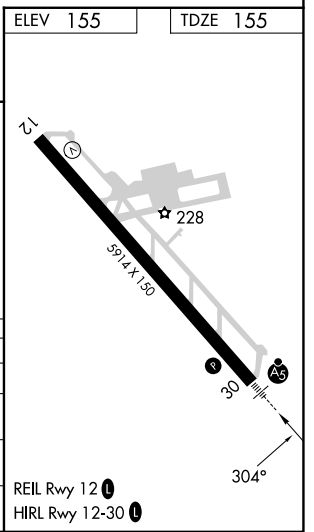
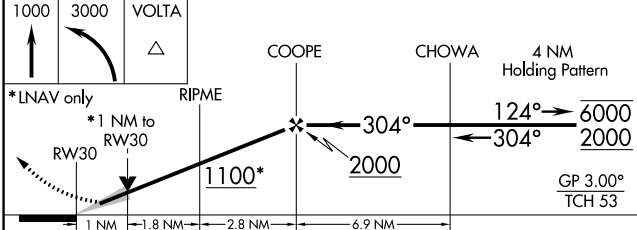
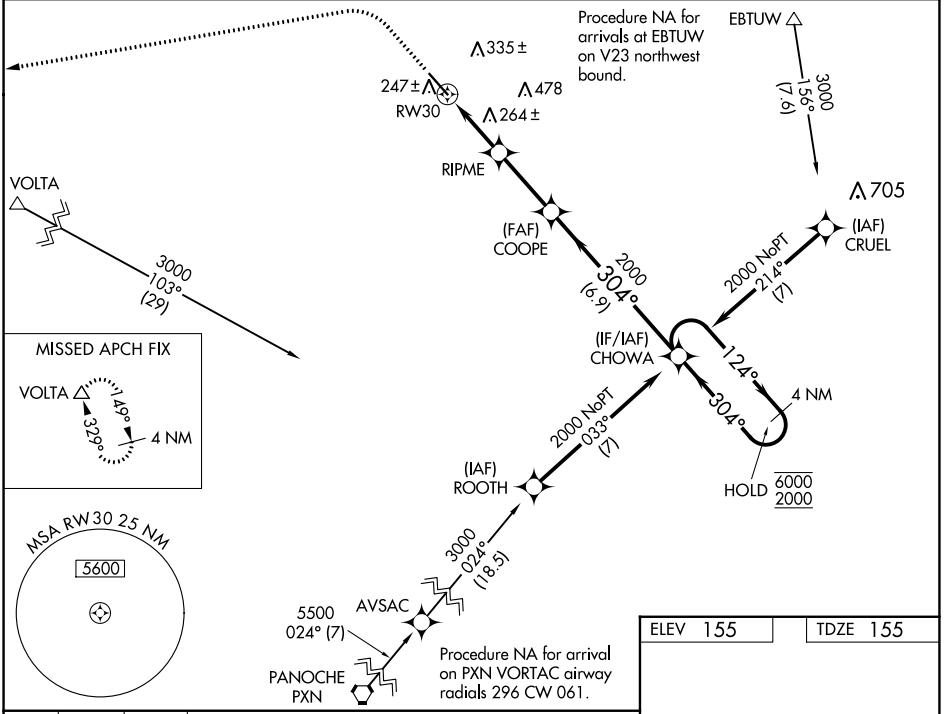
WAAS CH 93709 W30A	APP CRS 304°	Rwy Idg TDZE 155 Apt Elev 155	5914
--	------------------------	---	-------------

RNAV (GPS) RWY 30

MERCED YOSEMITE RGNL (MCE)

RNP APCH. ▼ For uncompensated Baro-VNAV systems, LNAV/VNAV NA below -3°C or above 54°C. For inoperative ALS, increase LNAV Cats C/D visibility to 1 3/8 SM. Circling NA northeast of Rwy 12-30.	MALSR 	MISSED APPROACH: Climb to 1000 then climbing left turn to 3000 direct VOLTA and hold.
--	-----------	---

ASOS 132.175	NORCAL APP CON 120.95 269.45	UNICOM 122.7 (CTAF) 0
------------------------	--	---------------------------------



CATEGORY	A	B	C	D
LPV DA	355-1/2		200 (200-1/2)	
LNAV/VNAV DA	544-5/8		389 (400-5/8)	
LNAV MDA	520-1/2 365 (400-1/2)		520-5/8 365 (400-5/8)	
CIRCLING	560-1 405 (500-1)	620-1 465 (500-1)	620-1 1/2 465 (500-1 1/2)	720-2 565 (600-2)

SW-2, 11 JUL 2024 to 08 AUG 2024

SW-2, 11 JUL 2024 to 08 AUG 2024