

ATLANTIC CITY, NEW JERSEY

24193

HI-VOR or TACAN RWY 31

VORTAC ACY 117.15 Chan 118(Y)	APCH CRS 302°	Rwy Idg 10,000 TDZE 64 Arprt Elev 75
---	-------------------------	---

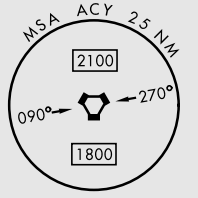
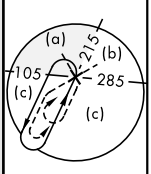
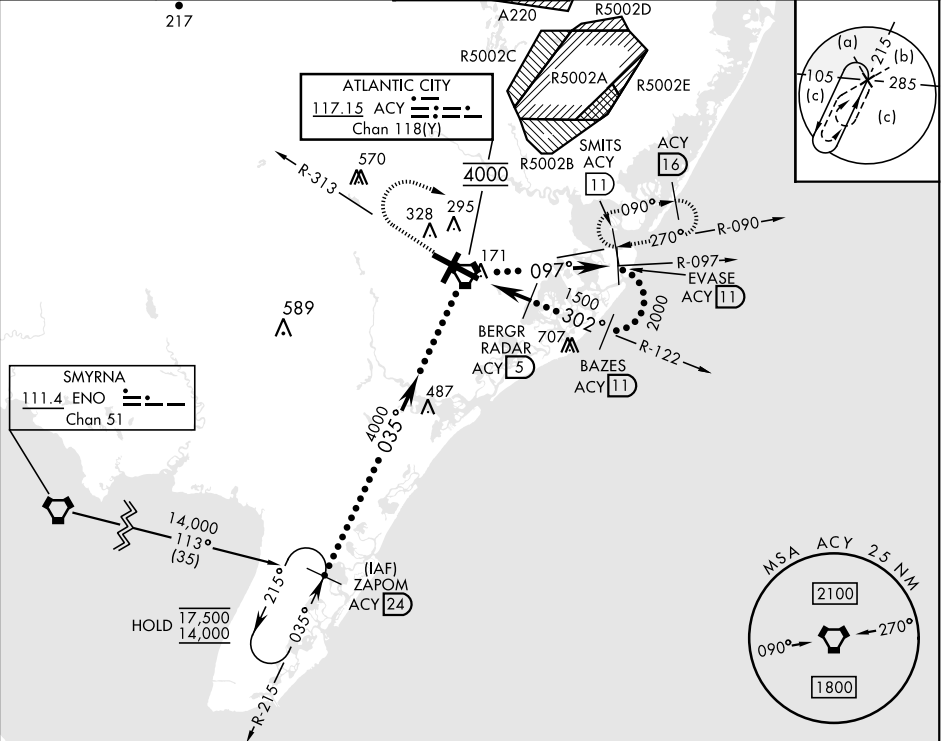
[USAF]

ATLANTIC CITY INTL (KACY)

DME or RADAR required

MISSED APPROACH: Climbing right turn to 2000 on heading 120° and on ACY R-090 to SMITS/ACY 11 DME and hold.

ATIS 125.725 316.15	APP CON 124.6 327.125 (130° - 309°) 134.25 292.2 (310° - 129°)	TOWER 120.3 239.0	GND CON 121.9 284.6	CLNC DEL 127.85 353.775
-------------------------------	--	-----------------------------	-------------------------------	-----------------------------------



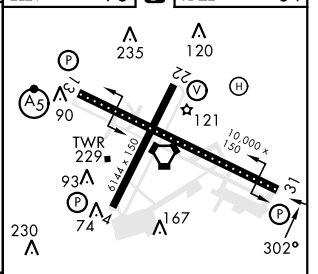
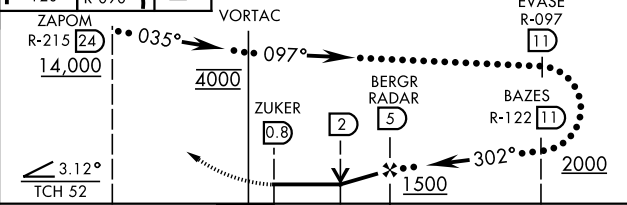
NE-2, 11 JUL 2024 to 08 AUG 2024

NE-2, 11 JUL 2024 to 08 AUG 2024

EMERG SAFE ALT 100 NM 4200

ELEV	75	TDZE	64
------	----	------	----

2000 hdg 120° ACY R-090	SMITS ACY [11]	VGSI and Descent Angles not Coincident. (VGSI Angle 3.00°/TCH 69)
-------------------------------	----------------	--



CATEGORY	C	D	E
S-31	500-1 1/4	436	(500-1 1/4)
CIRCLING	620-1 1/2 545 (600-1 1/2)	640-2 565 (600-2)	760-2 1/2 685 (700-2 1/2)

REIL Rwy 31
HRL Rwy 4-22 and 13-31
TDZL/CL Rwy 13

ATLANTIC CITY, NEW JERSEY

39°27'N-74°35'W

ATLANTIC CITY INTL (KACY)

Amdt 4C 25JAN24

HI-VOR or TACAN RWY 31