

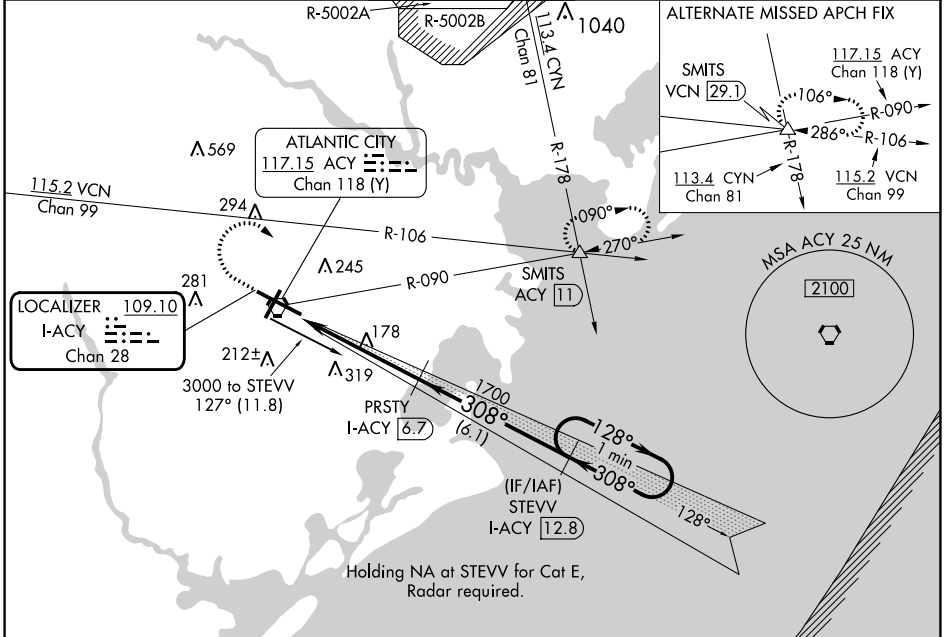
| | | | |
|---------------|-------------|----------|-----------|
| LOC/DME I-ACY | APP CRS | Rwy Idg | 10000 |
| 109.10 | 308° | TDZE | 64 |
| Chan 28 | | Apt Elev | 75 |

ILS or LOC/DME RWY 31

ATLANTIC CITY INTL (ACY)

MISSED APPROACH: Climb to 500 then climbing right turn to 2000 via heading 130° and via ACY R-090 to SMITS INT/ACY 11 DME and hold.

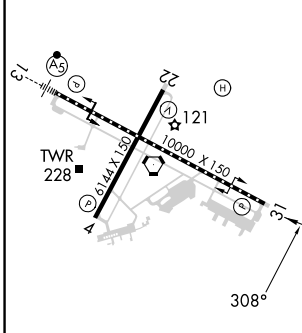
| | | | | |
|-----------------------|-----------------------|---------------------|--------------------|-----------------------|
| ATIS | ATLANTIC CITY APP CON | ATLANTIC CITY TOWER | GND CON | CLNC DEL |
| 125.725 316.15 | 124.6 327.125 | 120.3 239.0 | 121.9 284.6 | 127.85 353.775 |



NE-2, 11 JUL 2024 to 08 AUG 2024

NE-2, 11 JUL 2024 to 08 AUG 2024

| | | |
|---------|----------|---------|
| ELEV 75 | D | TDZE 64 |
|---------|----------|---------|



TDZ/CL Rwy 13
HIRL Rws 4-22 and 13-31
REIL Rwy 31

DME REQUIRED

| | | | | | |
|----------|----------------------|----------------------|------------------------|---|----------------------------|
| 500 | 2000 | ACY R-090 | SMITS | Use I-ACY DME when on localizer course. VGSI and ILS glidepath not coincident (VGSI Angle 3.00/TCH 69). | One Minute Holding Pattern |
| ↑ | hdg 130° | | △ | | |
| | | PRSTY I-ACY 6.7 | STEVV I-ACY 12.8 | | |
| | | I-ACY 1.8 | I-ACY 3 | 1700 | 128° → 2000 |
| | | | | 1700 | ← 308° |
| | | | | | GS 3.00° TCH 52 |
| | | 1.2 | 3.7 NM | 6.1 NM | |
| CATEGORY | A | B | C | D | E |
| S-ILS 31 | 264/40 200 (200-¾) | | | | |
| S-LOC 31 | 520/55 | 456 (500-1) | 520/60 456 (500-1½) | 520-1½ | 456 (500-1½) |
| CIRCLING | 540-1 465 (500-1) | 600-1 525 (600-1) | 620-1½ 545 (600-1½) | 640-2 565 (600-2) | 760-2½ 685 (700-2½) |