

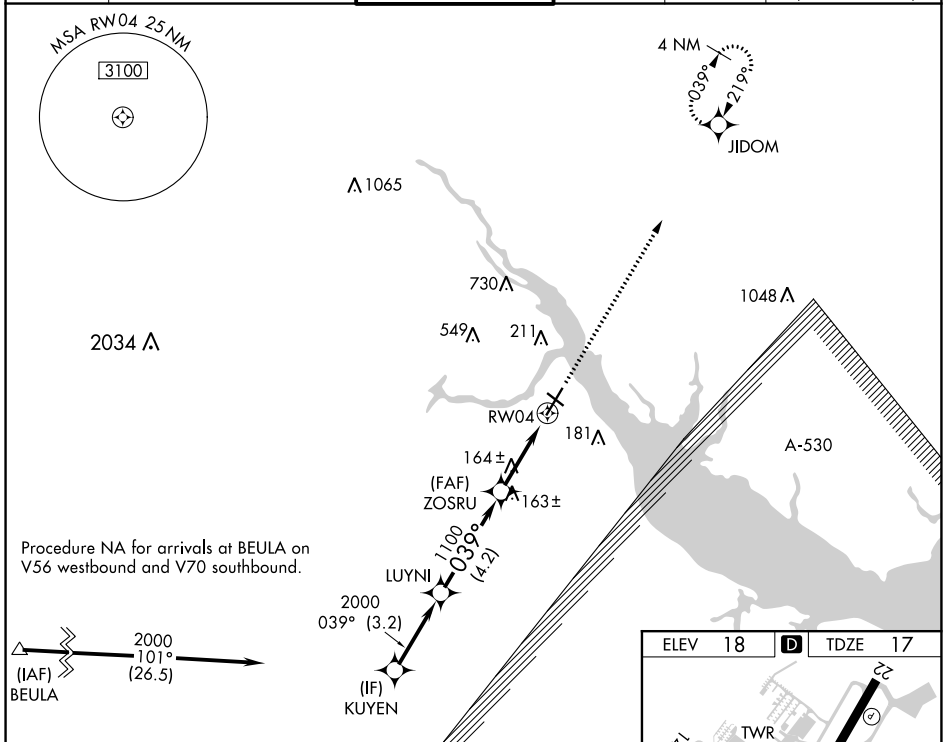
WAAS CH <b>69402</b> <b>W04A</b>	APP CRS <b>039°</b>	Rwy Idg <b>5753</b> TDZE <b>17</b> Apt Elev <b>18</b>
--	------------------------	---

# RNAV (GPS) RWY 4

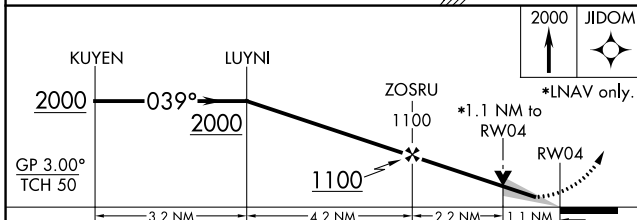
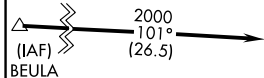
COASTAL CAROLINA RGNL (E'WN)

RNP APCH-GPS.	MISSED APPROACH: Climb to 2000 direct JIDOM and hold.
<p>▼ Circling Rwy 14, 32 NA at night. For uncompensated Baro-VNAV systems, LNAV/VNAV NA below -10°C or above 54°C.</p> <p>▲</p>	

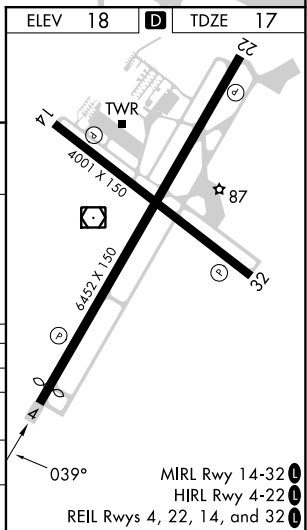
ASOS <b>118.525</b>	CHERRY POINT APP CON <b>119.35 374.9</b>	<b>NEW BERN TOWER ★</b> <b>124.25</b> (CTAF) <b>0</b>	GND CON <b>121.7</b>	CLNC DEL <b>121.7</b>	CLNC DEL <b>120.525</b> (when twr closed)
------------------------	---	--	-------------------------	--------------------------	---



Procedure NA for arrivals at BEULA on V56 westbound and V70 southbound.



CATEGORY	A	B	C	D
LPV DA		217-3/4	200 (200-3/4)	
LNAV/VNAV DA		441-1 1/4	424 (500-1 1/4)	
LNAV MDA	420-1	403 (500-1)	420-1 1/8	403 (500-1 1/8)
<b>C</b> CIRCLING	480-1 462 (500-1)	520-1 502 (600-1)	600-1 1/2 582 (600-1 1/2)	860-2 1/4 842 (900-2 1/4)



SE-2, 11 JUL 2024 to 08 AUG 2024

SE-2, 11 JUL 2024 to 08 AUG 2024

MIRL Rwy 14-32 **0**  
HIRL Rwy 4-22 **0**  
REIL Rws 4, 22, 14, and 32 **0**