

| | | |
|--|------------------------|---|
| WAAS CH 99423 W33A | APP CRS 336° | Rwy Idg 5105 TDZE 50 Apt Elev 54 |
|--|------------------------|---|

RNAV (GPS) RWY 33

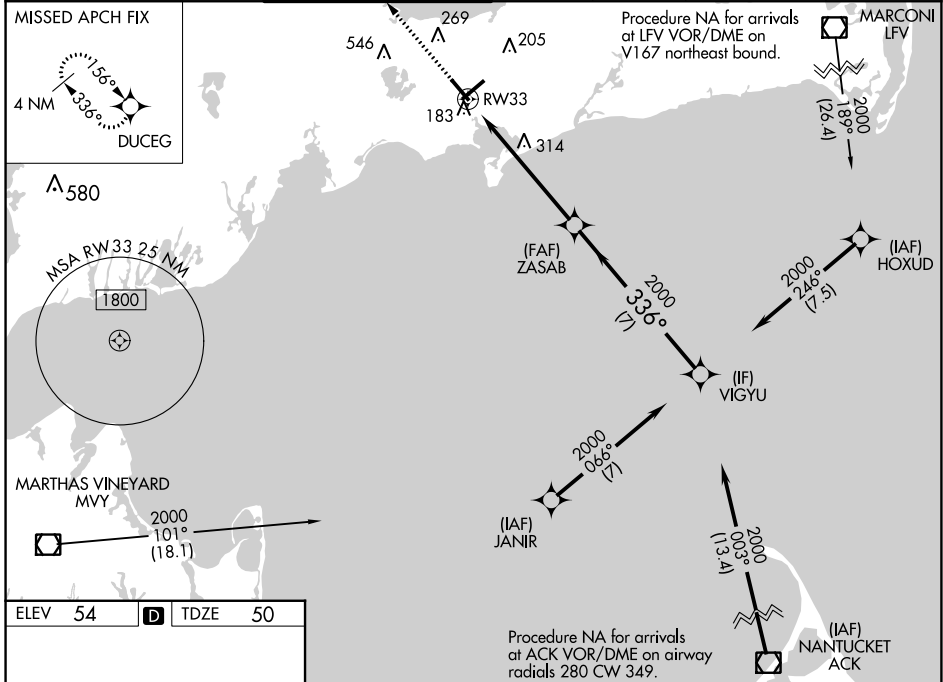
CAPE COD GATEWAY (HYA)

RNP APCH - GPS

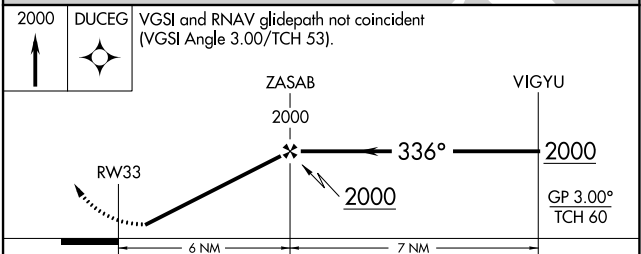
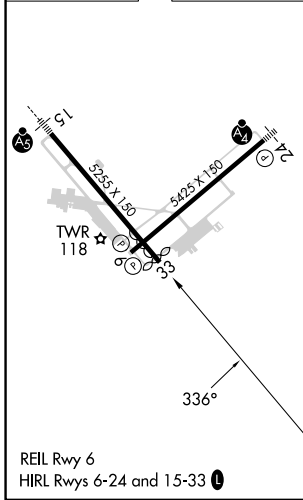
▼ Baro-VNAV NA when using Chatham altimeter setting. For uncompensated Baro-VNAV systems, LNAV/VNAV NA below -15°C or above 43°C. When local altimeter setting not received, use Chatham altimeter setting: increase LPV DA to 332 feet; increase LNAV/VNAV DA to 393 feet; increase all MDAs 40 feet and visibility Cats C and D ¼ SM. Rwy 33 helicopter visibility reduction below ¾ SM NA. Circling Rwy 24 at night, operational VGSI required, remain on or above VGSI glidepath until threshold.

MISSED APPROACH: Climb to 2000 direct DUCEG and hold.

| | | | | | | |
|----------------------|--|--|--------------------------|---------------------------|---|-------------------------|
| ATIS 123.8 | BOSTON APP CON ★ 118.2 284.6 | HYANNIS TOWER ★ 119.5 (CTAF) 257.8 | GND CON 118.45 | CLNC CON 125.15 | CLNC DEL 120.125 (When twr closed) | UNICOM 122.95 |
|----------------------|--|--|--------------------------|---------------------------|---|-------------------------|



| | | |
|---------|---|---------|
| ELEV 54 | D | TDZE 50 |
|---------|---|---------|



| CATEGORY | A | B | C | D |
|--------------|-------|-------------|------------------------|------------------------|
| LPV DA | | 300-1 | 250 (300-1) | |
| LNAV/VNAV DA | | 361-1 | 311 (400-1) | |
| LNAV MDA | 620-1 | 570 (600-1) | 620-1½ | 570 (600-1½) |
| CIRCLING | 620-1 | 566 (600-1) | 860-2¼ 806 (900-2¼) | 860-2½ 806 (900-2½) |

NE-1, 11 JUL 2024 to 08 AUG 2024

NE-1, 11 JUL 2024 to 08 AUG 2024