

WAAS CH 45799 W06A	APP CRS 066°	Rwy Idg TDZE 45 Apt Elev 54	5019
----------------------------------------	------------------------	-------------------------------------------------	-------------

RNAV (GPS) RWY 6

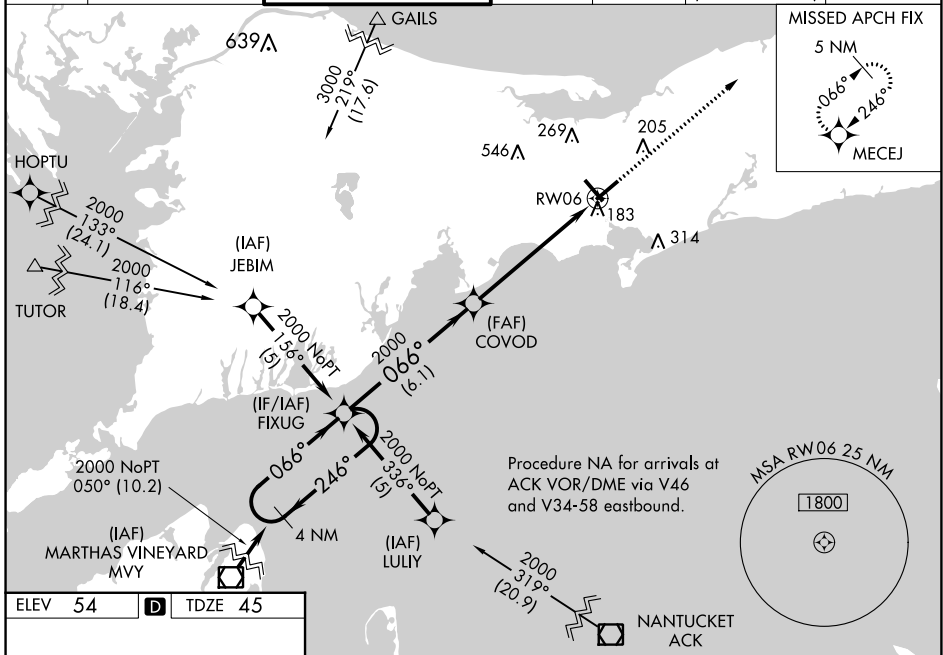
CAPE COD GATEWAY (HYA)

RNP APCH - GPS

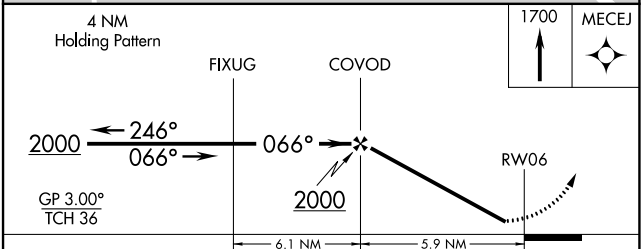
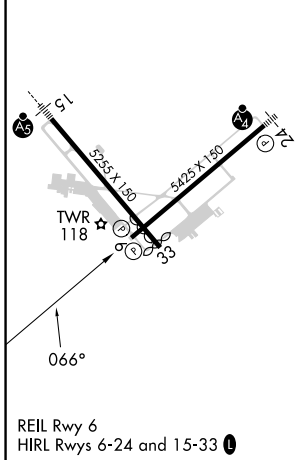
▼ Baro-VNAV NA below -1.5°C. Baro-VNAV NA when using Chatham altimeter setting. When local altimeter setting not received, use Chatham altimeter setting and increase LPV DA to 348 feet; increase LNAV/VNAV DA to 475 feet and increase LNAV/VNAV all Cats visibility 1/8 SM; increase all MDAs 40 feet; LNAV Cats C and D visibility 1/8 SM; Circling Cats C and D visibility 1/4 SM. Circling Rwy 24 at night, operational VGSI required, remain on or above VGSI glidepath until threshold. Rwy 6 helicopter visibility reduction below 3/4 SM NA.

MISSED APPROACH:
Climb to 1700 direct
MECEJ and hold.

ATIS 123.8	BOSTON APP CON * 118.2 284.6	HYANNIS TOWER * 119.5 (CTAF) 0 257.8	GND CON 118.45	CLNC DEL 125.15	CLNC DEL 120.125 (When twr closed)	UNICOM 122.95
----------------------	----------------------------------------	------------------------------------------------	--------------------------	---------------------------	-------------------------------------------------	-------------------------



ELEV 54	D	TDZE 45
---------	----------	---------



CATEGORY	A	B	C	D
LPV DA	316-1 271 (300-1)			
LNAV/VNAV DA	443-1½ 398 (400-1½)			
LNAV MDA	480-1	435 (500-1)	480-1¼ 435 (500-1¼)	480-1½ 435 (500-1½)
C CIRCLING	560-1 506 (600-1)	580-1 526 (600-1)	860-2¼ 806 (900-2¼)	860-2½ 806 (900-2½)

NE-1, 11 JUL 2024 to 08 AUG 2024

NE-1, 11 JUL 2024 to 08 AUG 2024