

FORT CAMPBELL, KENTUCKY

# ILS or LOC RWY 23

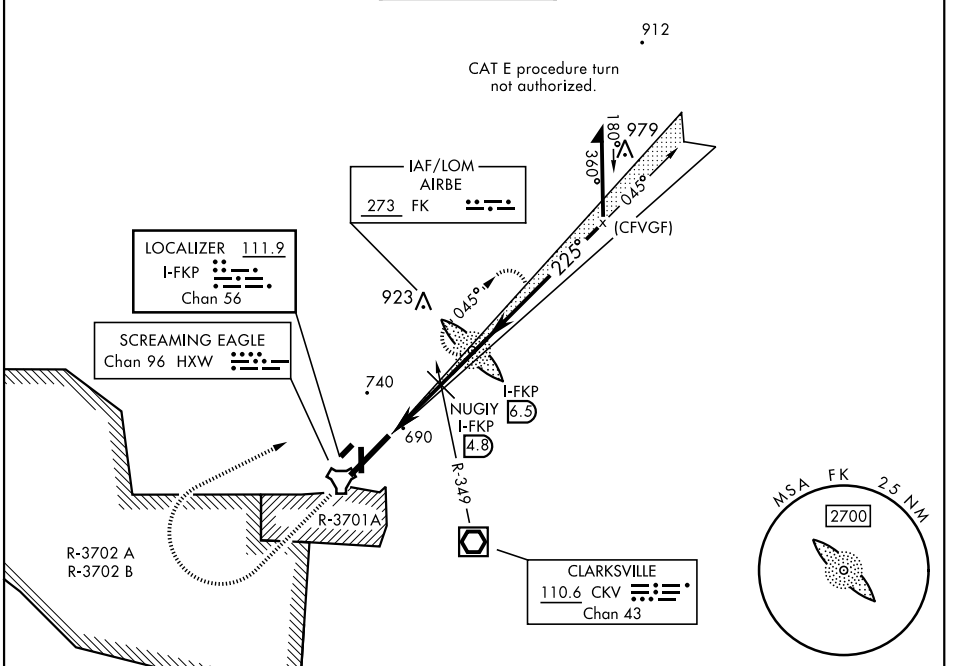
LOC I-FKP <b>111.9</b> Chan <b>56</b>	APCH CRS <b>225°</b>	Rwy Idg <b>10,926</b> TDZE <b>571</b> Arpt Elev <b>571</b>
---	-------------------------	--

[USA]

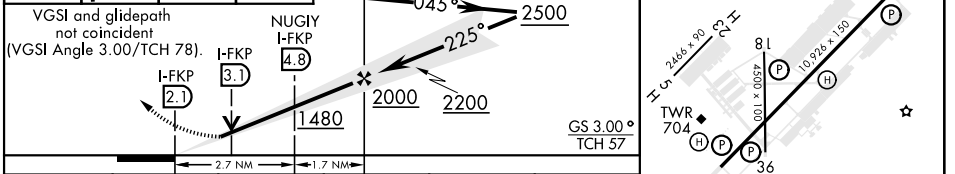
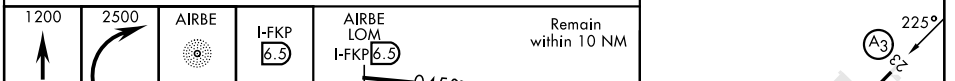
CAMPBELL AAF (KHOP)

RADAR required	SSALR 	MISSED APPROACH: Climb to 1200 then climbing right turn to 2500 direct AIRBE LOM/I-FKP 6.5 DME, continue climb-in-hold to 2500 (max 230 KIAS).
<ul style="list-style-type: none"> <li>* When ALS inop, increase RVR to 40, vis to 3/4 miles.</li> <li>** When ALS inop, increase CAT AB RVR to 55, vis to 1 mile; CAT CDE RVR to 60, vis to 1 1/2 miles.</li> <li>*** Circling not authorized SE of Rwy 5-23.</li> </ul>		

ATIS <b>125.175 308.4</b>	APP CON <b>118.1 269.525</b>	TOWER <b>120.9 278.8</b>	GND CON <b>121.8 266.8</b>	CLNC DEL <b>138.8</b>	ASR/PAR
------------------------------	---------------------------------	-----------------------------	-------------------------------	--------------------------	---------



ELEV 571	TDZE 571
----------	----------



CATEGORY	A	B	C	D	E
S-ILS 23 *	771/24		200	(200-1/2)	
S-LOC 23 **	960/24	389 (400-1/2)	960/35	389	(400-3/8)
CIRCLING ***	1060-1	489 (500-1)	1060-1 1/2 489 (500-1 1/2)	1140-2	569 (600-2)

HIRL all rwys					
FAF to MAP 4.4 NM					
Knots	60	90	120	150	180
Min:Sec	4:24	2:56	2:12	1:46	1:28

FORT CAMPBELL, KENTUCKY 36° 40' N - 87° 30' W CAMPBELL AAF (KHOP)

Amdt 14 10AUG23

# ILS or LOC RWY 23

SE-1, 11 JUL 2024 to 08 AUG 2024

SE-1, 11 JUL 2024 to 08 AUG 2024