

# NDB RWY 23

NDB FK <b>273</b>	APCH CRS <b>225°</b>	Rwy ldg TDZE Arprt Elev <b>10,926</b> <b>571</b> <b>571</b>
----------------------	-------------------------	--

[USA]

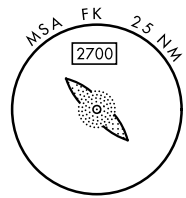
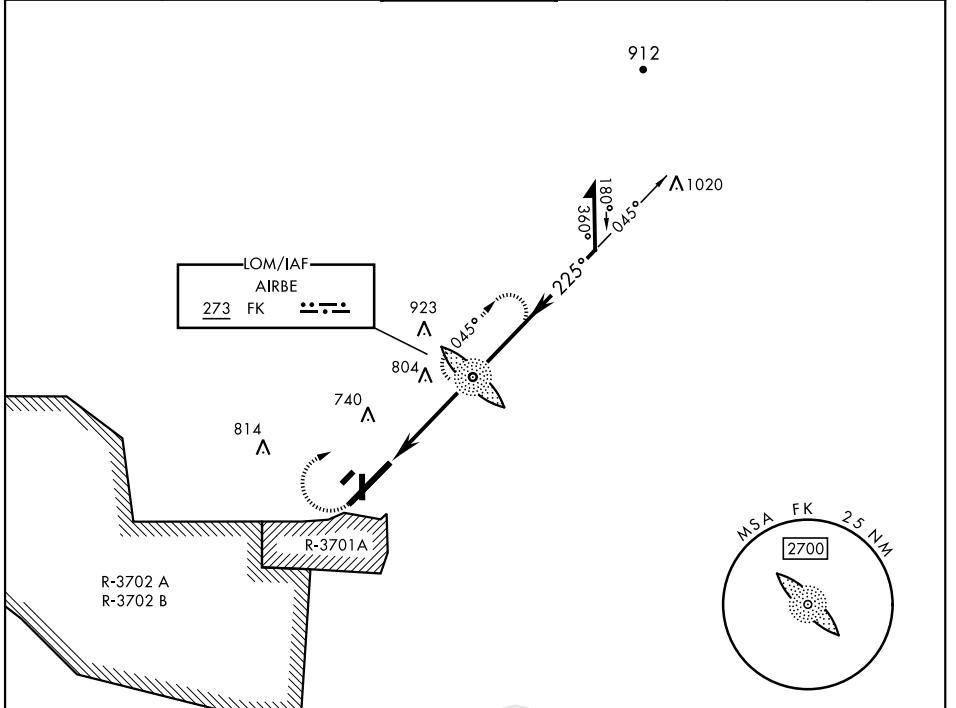
CAMPBELL AAF (KHOP)

RADAR required  
 \* When ALS inop, increase CAT AB RVR to 55, vis to 1mile; CAT CD vis to 1½ miles.  
 \*\* Circling not authorized SE of Rwy 5-23.



MISSED APPROACH: Climb to 1200, then climbing right turn to 2500 direct to FK LOM and continue climb-in-hold (max 230 KIAS).

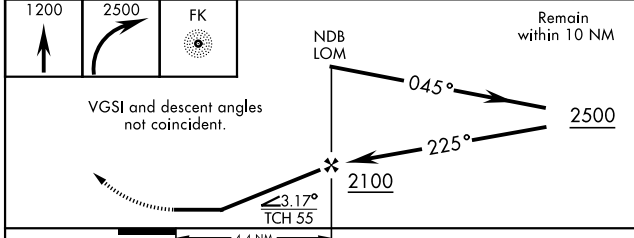
ATIS <b>125.175 308.4</b>	APP CON <b>118.1 269.525</b>	TOWER <b>120.9 278.8</b>	GND CON <b>121.8 266.8</b>	CLNC DEL <b>138.8</b>	ASR/PAR
------------------------------	---------------------------------	-----------------------------	-------------------------------	--------------------------	---------



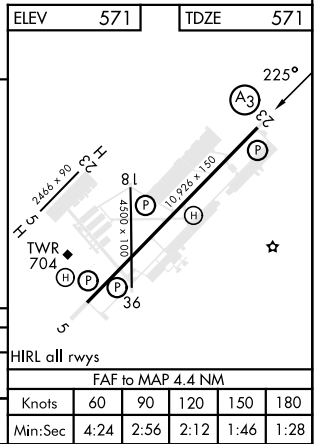
SE-1, 11 JUL 2024 to 08 AUG 2024

SE-1, 11 JUL 2024 to 08 AUG 2024

ELEV 571	TDZE 571
----------	----------



CATEGORY	A	B	C	D
S-23*	1120/40 549 (600-¾)		1120/60 549 (600-1½)	
CIRCLING **	1120-1 549 (600-1)		1120-1½ 549 (600-1½)	1140-2 569 (600-2)



# NDB RWY 23