

RNAV (GPS) RWY 23

WAAS Chan 56203 W23A	APCH CRS 225°	Rwy Idg 10,926 TDZE 571 Arprt Elev 571
--	-------------------------	---

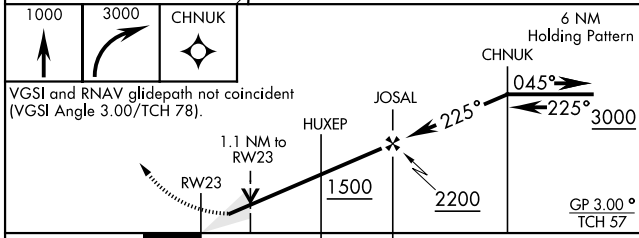
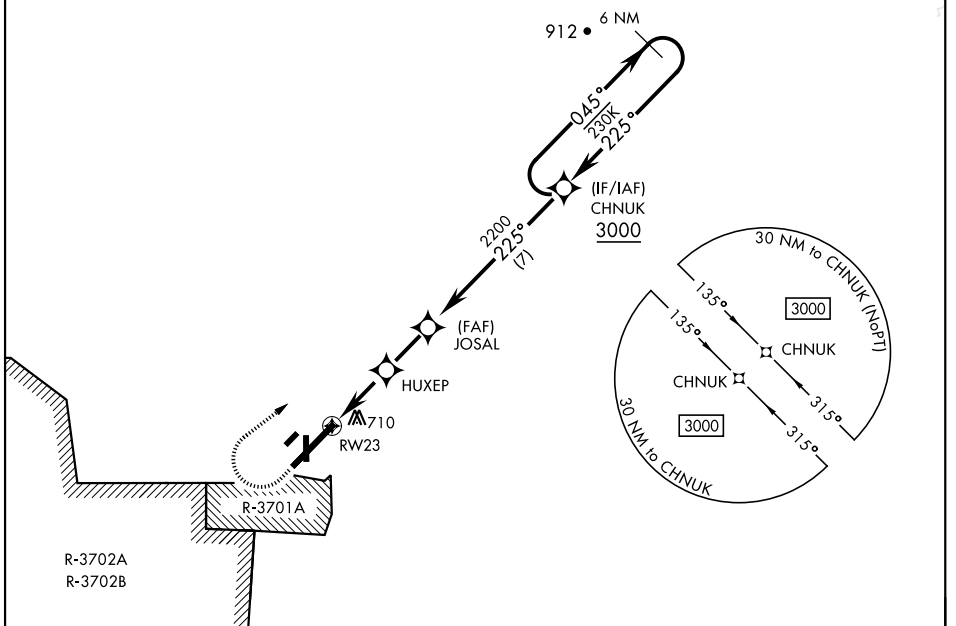
[USA]

CAMPBELL AAF (KHOP)

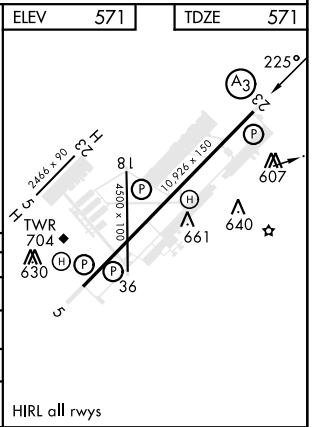
RNP APCH - GPS	SSALR (A3)	MISSED APPROACH: Climb to 1000 then climbing right turn to 3000 direct CHNUK and hold.
<p>▼ * When ALS inop, increase RVR to 40, vis to 3/4 mile. ** When ALS inop, increase RVR to 55, vis to 1 mile. *** When ALS inop, increase CAT AB RVR to 55, vis to 1 mile, CAT CDE RVR to 60, vis to 1 1/8 miles. **** Circling NA SE of Rwy 5-23.</p>		

ATIS 125.175 308.4	APP CON 118.1 269.525	TOWER 120.9 278.8	GND CON 121.8 266.8	CLNC DEL 138.8	ASR/PAR
------------------------------	---------------------------------	-----------------------------	-------------------------------	--------------------------	---------

For uncompensated BARO-VNAV systems, LNAV/VNAV NA below -19°C (-2°F) or above 54°C (130°F).



CATEGORY	A	B	C	D	E
LPV DA *	771/24		200	(200-1/2)	
LNAV/VNAV DA **	949/35		378	(400-3/4)	
LNAV MDA ***	960/24	389 (400-1/2)	960/35		389 (400-3/4)
**** CIRCLING	1060-1	489 (500-1)	1060-1 1/2 489 (500-1 1/2)	1140-2	569 (600-2)



RNAV (GPS) RWY 23

SE-1, 11 JUL 2024 to 08 AUG 2024

SE-1, 11 JUL 2024 to 08 AUG 2024