

LOC/DME I-GLD 108.9 Chan 26	APP CRS 305°	Rwy Idg 5499	TDZE 3654
		Apt Elev 3657	

ILS or LOC RWY 30

RENNER FLD/GOODLAND MUNI (G.LD)

⚠ Circling NA south of runways 5 and 30. ADF required. VDP NA with Burlington, CO altimeter setting. When local altimeter setting not received, use Burlington, CO altimeter setting and increase all DA 144 feet and all MDA 160 feet. Increase S-ILS 30 all Cats visibility to 5/8 mile, S-LOC 30 Cat C/D visibility to 1 3/8 mile, Circling Cat C visibility to 1 3/4 mile, and Cat D to 2 1/4 mile. Circling NA to Rwy 17 and 35. Circling Rwy 5, 23 NA at night.

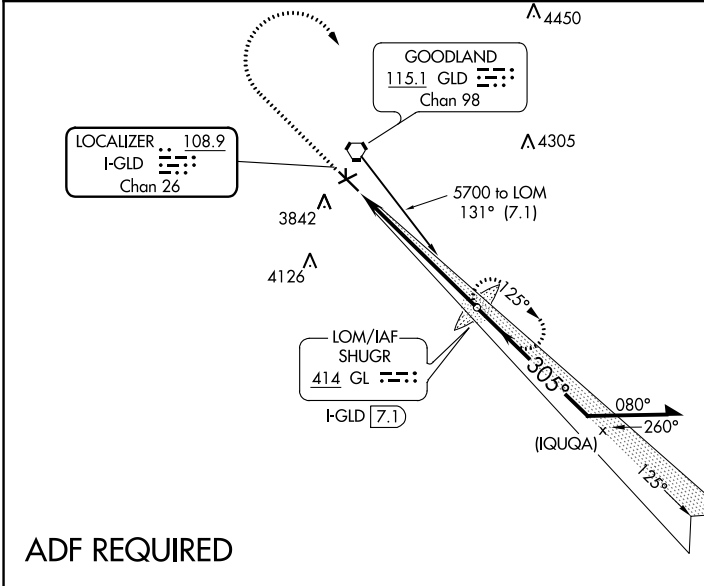
MALSR

MISSED APPROACH: Climb to 4500 then climbing right turn to 5700 direct SHUGR LOM/I-GLD 7.1 DME and hold.

ASOS
121.025

DENVER CENTER
132.7 226.675

UNICOM
122.8 (CTAF)

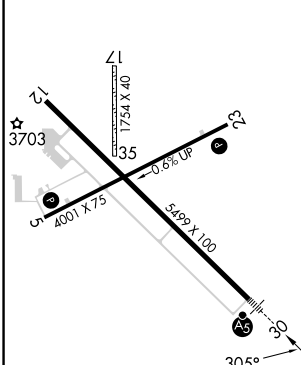


ALTERNATE MISSED APCH FIX

GOODLAND
GLD 115.1
Chan 98

ADF REQUIRED

ELEV 3657	TDZE 3654
-----------	-----------

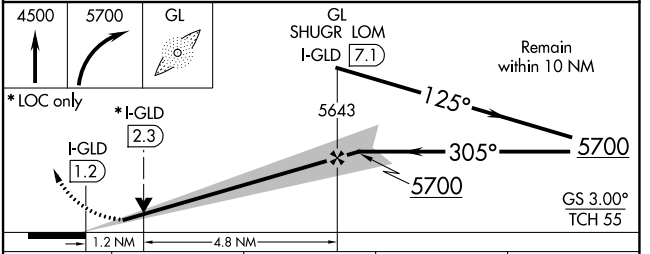


REIL Rwy 12

MIRL Rwys 5-23 and 12-30

FAF to MAP 6 NM

Knots	60	90	120	150	180
Min:Sec	6:00	4:00	3:00	2:24	2:00



CATEGORY	A	B	C	D
S-ILS-30	3854-1/2 200 (200-1/2)			
S-LOC-30	4100-1/2	446 (500-1/2)	4100-7/8	446 (500-7/8)
<input checked="" type="checkbox"/> CIRCLING	4100-1 443 (500-1)	4120-1 463 (500-1)	4120-1 1/2 463 (500-1 1/2)	4240-2 583 (600-2)

NC-2, 11 JUL 2024 to 08 AUG 2024

NC-2, 11 JUL 2024 to 08 AUG 2024