

WAAS CH 90201 W22A	APP CRS 226°	Rwy Idg TDZE Apt Elev	6604 979 979
--	------------------------	-----------------------------	---

RNAV (GPS) RWY 22

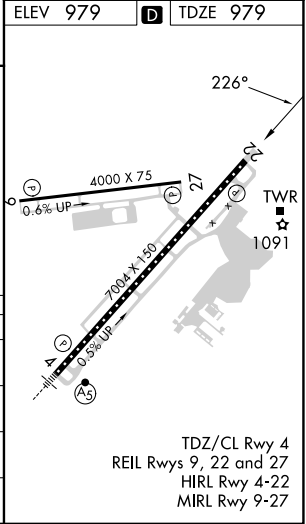
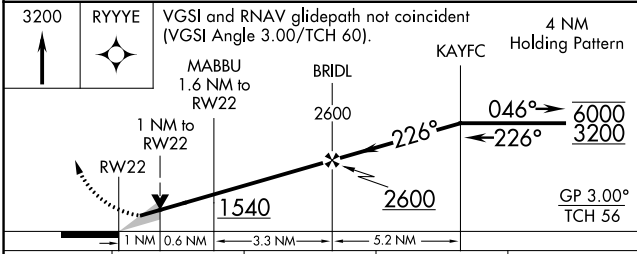
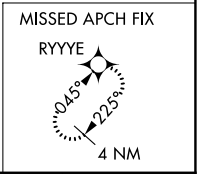
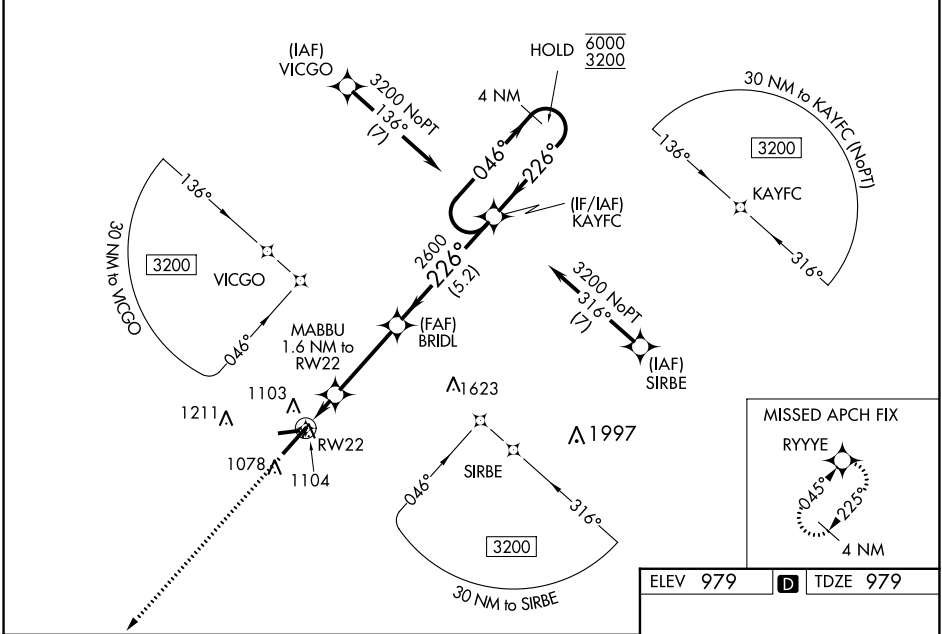
BLUE GRASS (LEX)

RNP APCH - GPS.

⚠ For uncompensated Baro-VNAV systems, LNAV/VNAV NA below -16°C or above 54°C. Baro-VNAV and VDP NA when using Frankfort altimeter setting. When local altimeter setting not received, use Frankfort altimeter setting: increase LPV DA to 1241 feet and all visibilities 1/8 SM; increase LNAV/VNAV DA to 1327 feet and all visibilities 1/8 SM; increase all MDAs 80 feet and visibility Cat C/D 1/4 SM.

MISSED APPROACH: Climb to 3200 direct RYYYY and hold, continue climb-in-hold to 3200.

ATIS 126.3	LEXINGTON APP CON 120.15 259.3 (040°-220°) 120.75 298.9 (221°-039°)	LEXINGTON TOWER 119.1 257.8	GND CON 121.9	CLNC DEL 132.35
----------------------	---	---------------------------------------	-------------------------	---------------------------



CATEGORY	A	B	C	D
LPV DA		1179-3/4	200 (200-3/4)	
LNAV/VNAV DA		1265-7/8	286 (300-7/8)	
LNAV MDA	1360-1	381 (400-1)	1360-1 1/8	381 (400-1 1/8)
C CIRCLING	1420-1 441 (500-1)	1440-1 461 (500-1)	1520-1 1/2 541 (600-1 1/2)	1600-2 621 (700-2)

SE-1, 11 JUL 2024 to 08 AUG 2024

SE-1, 11 JUL 2024 to 08 AUG 2024