

APP CRS <b>335°</b>	Rwy Idg TDZE Apt Elev <b>N/A</b> <b>N/A</b> <b>617</b>
------------------------	-----------------------------------------------------------------------

# RNAV (GPS)-B

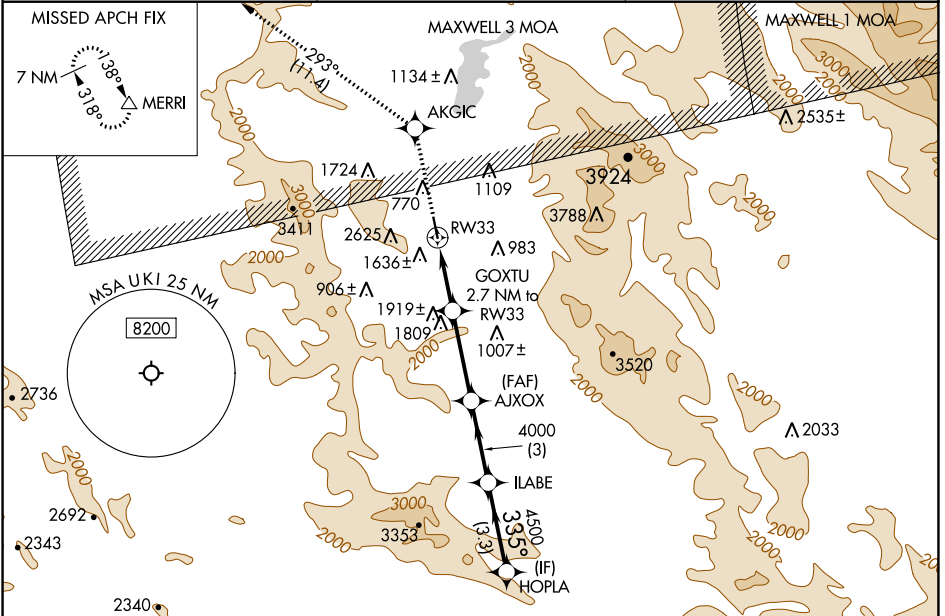
UKIAH MUNI (UKI)

RNP APCH - GPS.

- ⚠ Circling NA southwest of Rwy 15-33. Circling Rwy 33 NA at night.
- ⚠ Rwy 33 helicopter visibility reduction below 1 SM NA. When local altimeter setting not received, procedure NA.

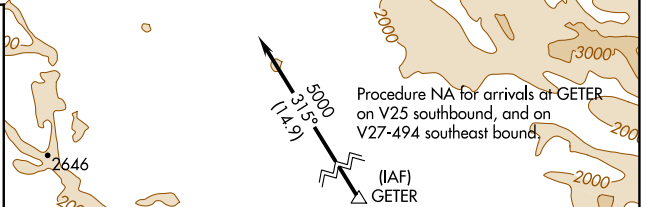
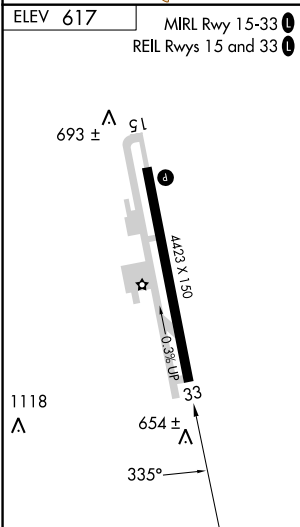
MISSED APPROACH: Climb to 6700 direct AKGIC and on track 293° to MERRI and hold, continue climb-in-hold to 6700.

ASOS <b>119.275</b>	OAKLAND CENTER <b>127.8 353.5</b>	UNICOM <b>123.0 (CTAF) 0</b>
------------------------	--------------------------------------	---------------------------------



SW-2, 11 JUL 2024 to 08 AUG 2024

SW-2, 11 JUL 2024 to 08 AUG 2024



6700	AKGIC	tr 293°	MERRI	HOPLA
GOXTU 2.7 NM to RW33		AJXOX	ILABE	5000
RW33		4000		4500
7.62° TCH 40		335°		5000
2.7 NM		3.3 NM		3.3 NM
CATEGORY	A	B	C	D
<b>C</b> CIRCLING	2080-1¼ 1463 (1500-1¼)	2100-1½ 1483 (1500-1½)	2140-3 1523 (1600-3)	2780-3 2163 (2200-3)