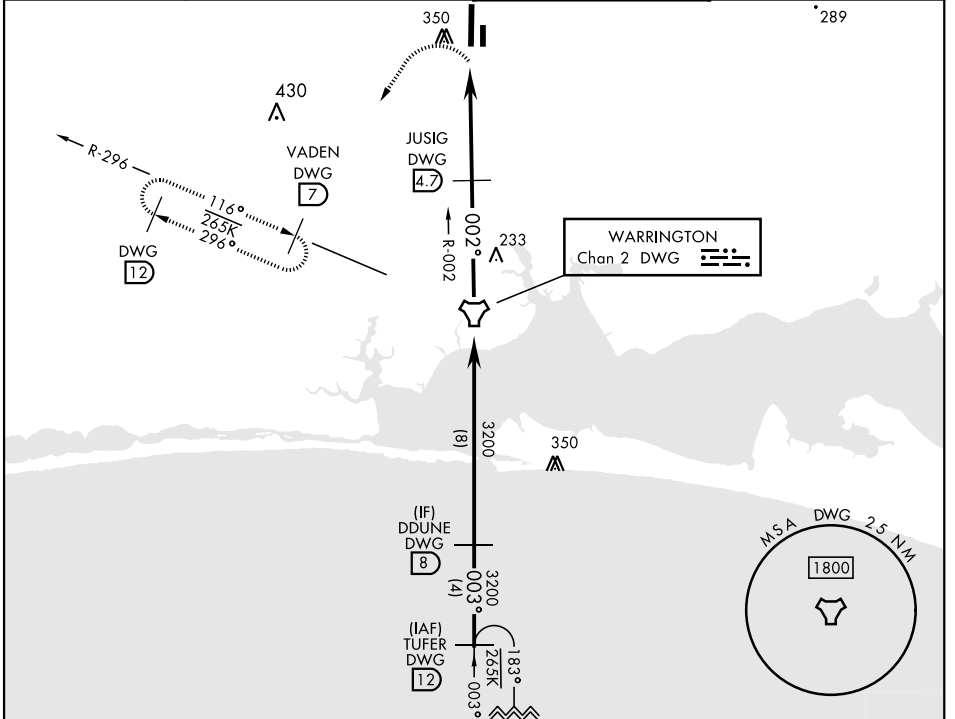


# TACAN Z RWY 36

TACAN DWG Chan <b>2</b>	APCH CRS <b>002°</b>	Rwy Idg TDZE Arprt Elev <b>8025</b> <b>191</b> <b>195</b>	AL-699 [USAF]	DUKE FLD (EGLIN AF AUX NR3)	(KEGI)
----------------------------	-------------------------	--	---------------	-----------------------------	--------

MISSED APPROACH: Climbing left turn to 2000 direct DWG R-296/7 DME (VADEN) and hold.  
Missed Approach requires use of RNAV or ATC RADAR monitoring.

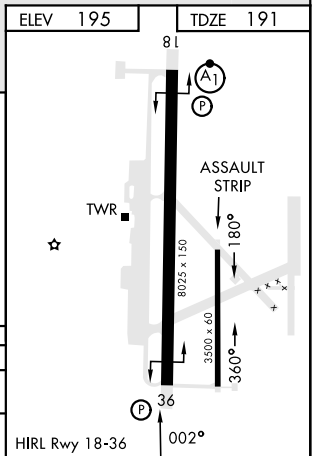
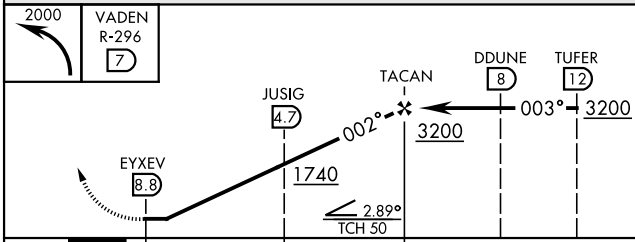
ATIS ★ <b>244.575</b>	EGLIN APP CON <b>125.1 281.45</b> (271°-089°) <b>132.1 360.6</b> (090°-270°)	TOWER ★ <b>133.2 290.425</b>	GND CON <b>123.25 251.125</b>
--------------------------	--	---------------------------------	----------------------------------



SE-3, 11 JUL 2024 to 08 AUG 2024

SE-3, 11 JUL 2024 to 08 AUG 2024

EMERG SAFE ALT 100 NM 3500



CATEGORY	A	B	C	D	E
S-36	600/55 409 (500-1)		600/60 409 (500-1½)		
CIRCLING	660-1 465 (500-1)	700-1 505 (600-1)	700-1½ 505 (600-1½)	760-2 565 (600-2)	780-2 585 (600-2)

# TACAN Z RWY 36