

APP CRS	Rwy Idg	4558
074°	TDZE	810
	Apt Elev	813

RNAV (GPS) RWY 7

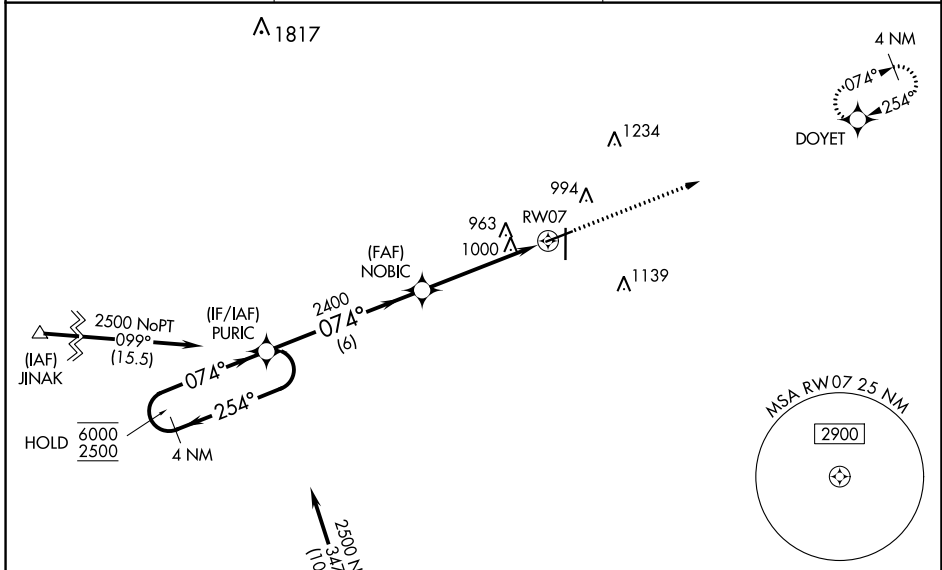
FINDLAY (F'DY)

RNP APCH - GPS.

⚠ Baro-VNAV and VDP NA when using Lima Allen County altimeter setting. Rwy 7 helicopter visibility reduction below 3/4 SM NA. For uncompensated Baro-VNAV systems, LNAV/VNAV NA below -16°C or above 54°C. When local altimeter setting not received, use Lima altimeter setting and increase LNAV/VNAV DA to 1391 feet and all visibilities 3/8 SM. Increase all MDAs 80 feet and LNAV visibility Cat C/D 1/8 SM, and Circling visibility Cat C/D 1/4 SM. Straight-In Rwy 7 NA at night, Circling Rwy 7 NA at night.

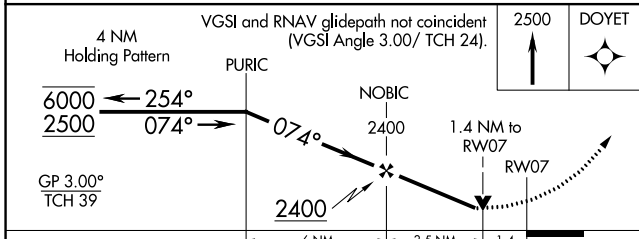
MISSED APPROACH: Climb to 2500 direct DOYET and hold.

ASOS 132.85	TOLEDO APP CON 120.8 317.55	UNICOM 122.725 (CTAF) 0
-----------------------	---------------------------------------	-----------------------------------

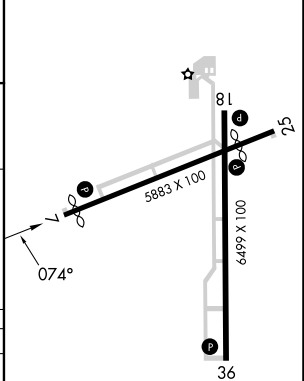


Procedure NA for arrivals at KINDE on V47 southbound.

(IAF) KINDE



ELEV 813	D TDZE 810
----------	-------------------



CATEGORY	A	B	C	D
LNAV/VNAV DA	1311-13/4		501 (500-13/4)	
LNAV MDA	1260-1	450 (500-1)	1260-13/8	450 (500-13/8)
C CIRCLING	1440-1	627 (700-1)	1440-13/4	1540-21/4
			627 (700-13/4)	727 (800-21/4)

HIRL Rwy 7-25 and 18-36 **0**
REIL Rwy 7, 25 and 36 **0**

EC-2, 11 JUL 2024 to 08 AUG 2024

EC-2, 11 JUL 2024 to 08 AUG 2024