

VOR RWY 35

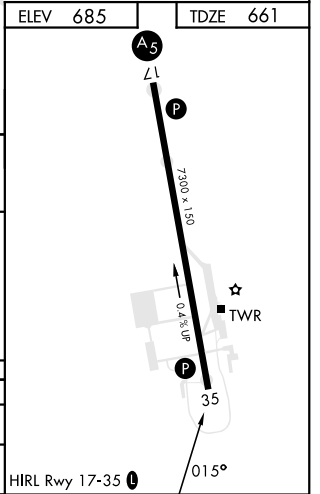
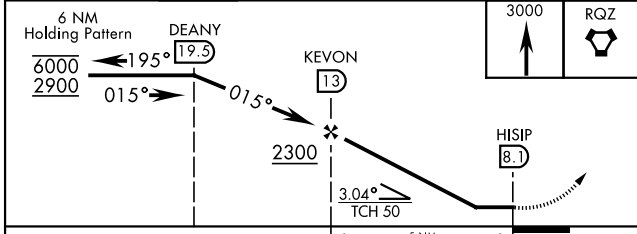
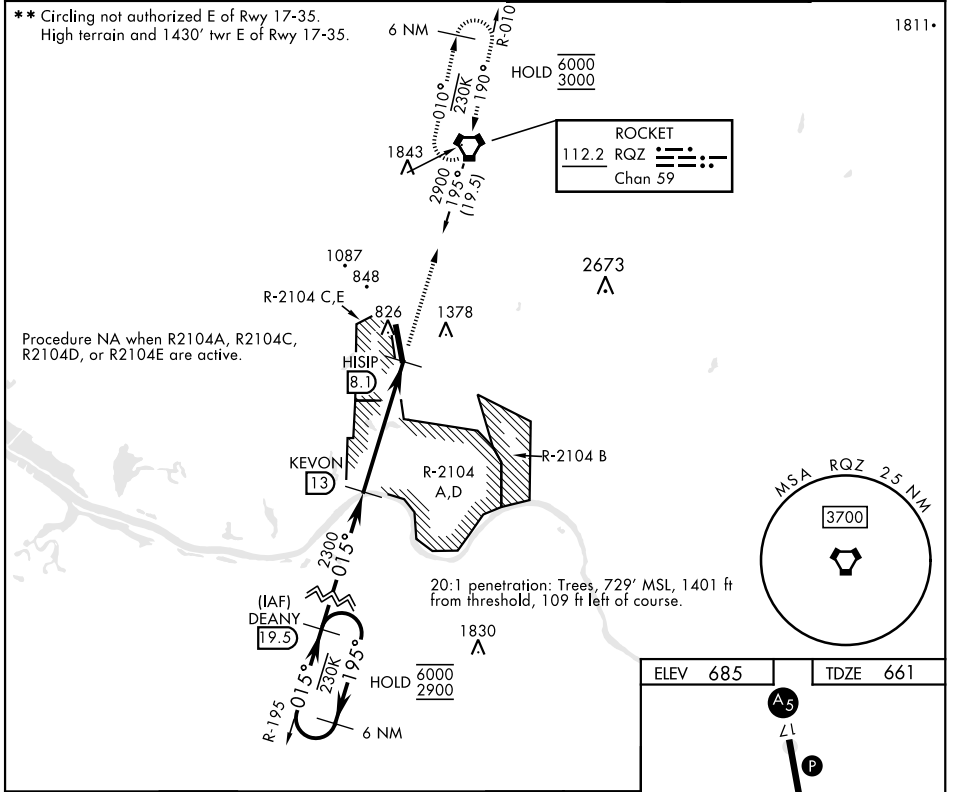
VORTAC RQZ 112.2 Chan 59	APCH CRS 015°	Rwy ldg TDZE 661 Arpt Elev 685
--	-------------------------	---

AL-703 [USA]

REDSTONE AAF (KHUA)

DME required		MISSED APPROACH: Climb to 3000 direct RQZ VORTAC and hold. Do not exceed 230 KIAS.
<p>▼ * At night, operational VGSI required, remain on or above VGSI glidepath until threshold. ▲ Helicopter visibility reduction NA.</p>		

ATIS 120.65	HUNTSVILLE APP CON 125.6 354.1	TOWER * 126.95 (CTAF) 290.275	PAR
-----------------------	--	--	-----



CATEGORY	A	B	C	D	E
S-35 *	1500-1 839 (900-1)	1500-1¼ 839 (900-1¼)	1500-2½	839	(900-2½)
☐ CIRCLING **	1500-1¼	815 (900-1¼)	1500-2½ 815 (900-2½)	1740-3	1055 (1100-3)

VOR RWY 35

SE-4, 11 JUL 2024 to 08 AUG 2024

SE-4, 11 JUL 2024 to 08 AUG 2024