

WAAS CH 70627 W12A	APP CRS 120°	Rwy Idg TDZE Apt Elev	6799 680 682
--	------------------------	-----------------------------	---

RNAV (GPS) RWY 12

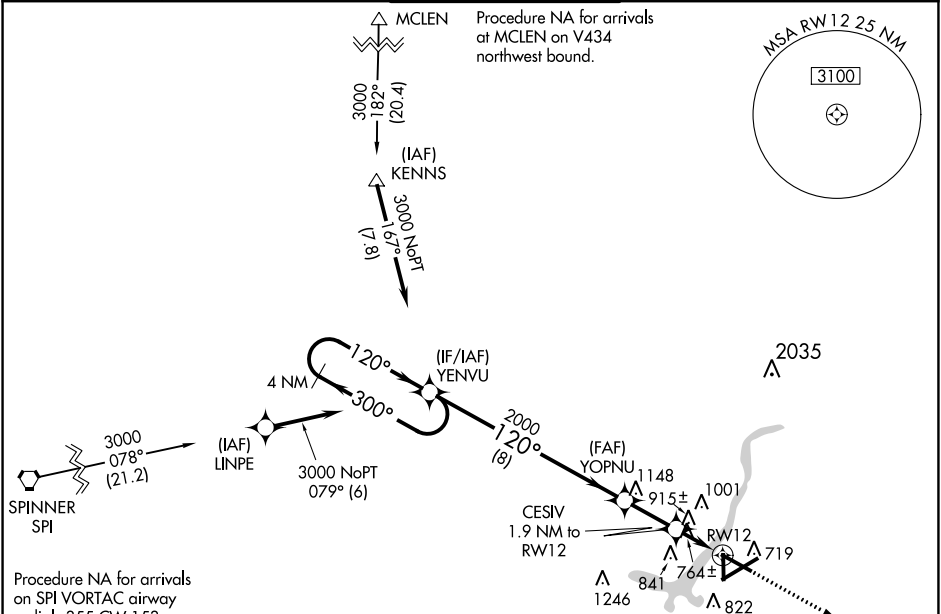
DECATUR (DEC)

RNP APCH - GPS.

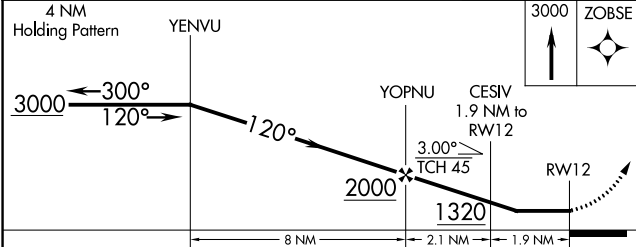
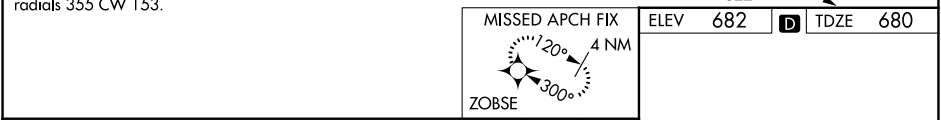
⚠ Procedure NA at night. Rwy 12 helicopter visibility reduction below 3/4 SM NA. When local altimeter setting not received, use Lincoln altimeter setting and increase all MDA 80 feet, increase LP Cat C and D visibility 1/4 SM, LNAV Cat C and D visibility 3/8 SM, and Circling Cat C and D visibility 1/4 SM.

MISSED APPROACH:
Climb to 3000 direct ZOBSE and hold.

ATIS 126.35	CHAMPAIGN APP CON* 132.85 290.225	DECATUR TOWER* 118.9 (CTAF) 291.775	GND CON 121.75 291.775	UNICOM 122.95
-----------------------	---	---	----------------------------------	-------------------------

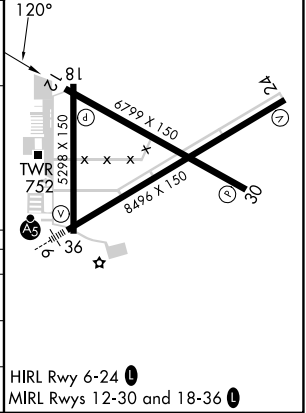


Procedure NA for arrivals on SPI VORTAC airway radials 355 CW 153.



MISSED APCH FIX	ELEV 682	TDZE 680
-----------------	----------	----------

CATEGORY	A	B	C	D
LP MDA	1020-1 340 (400-1)			
LNAV MDA	1180-1 500 (500-1)	1180-1 3/8 500 (500-1 3/8)		
CIRCLING	1200-1 518 (600-1)	1240-1 558 (600-1)	1360-2 678 (700-2)	1360-2 1/4 678 (700-2 1/4)



EC-3, 11 JUL 2024 to 08 AUG 2024

EC-3, 11 JUL 2024 to 08 AUG 2024