

WAAS CH <b>49127</b> <b>W30A</b>	APP CRS <b>300°</b>	Rwy Idg TDZE <b>679</b> Apt Elev <b>682</b>	<b>6799</b>
--	------------------------	---	-------------

# RNAV (GPS) RWY 30

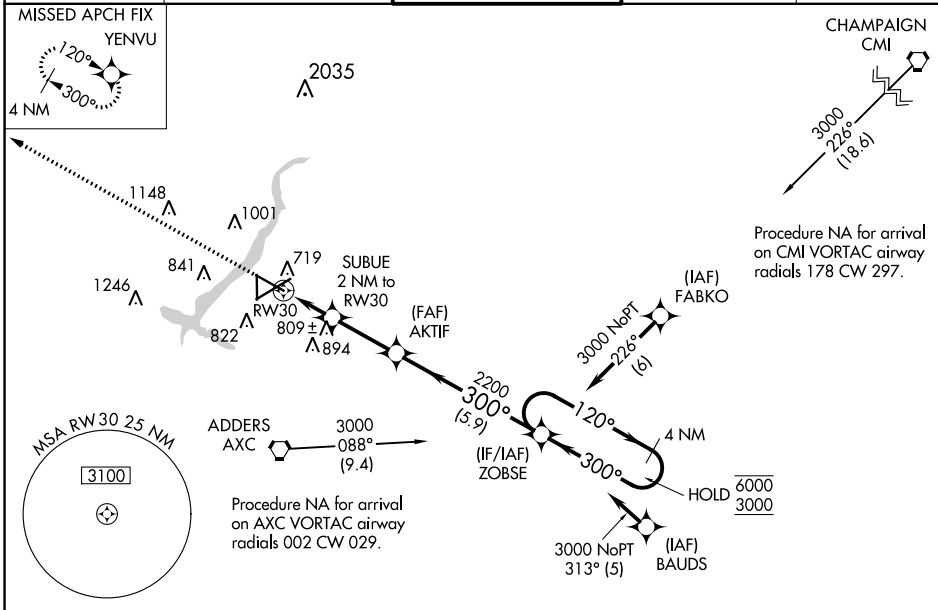
DECATUR (DEC)

RNP APCH.

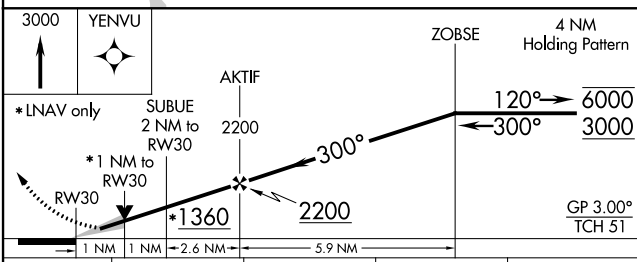
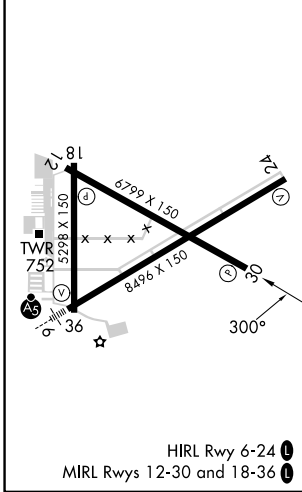
▼ For uncompensated Baro-VNAV systems, LNAV/VNAV NA below -19°C or above 54°C.  
 ▲ When local altimeter setting not received, use Lincoln altimeter setting and increase all DA/MDA 80 feet, increase LNAV Cat C/D and Circling Cat C/D visibility ¼ SM. Baro-VNAV and VDP NA when using Lincoln altimeter setting.

MISSED APPROACH:  
 Climb to 3000 direct YENVU and hold.

ATIS <b>126.35</b>	CHAMPAIGN APP CON* <b>132.85 290.225</b>	DECATUR TOWER* <b>118.9(CTAF) 0 291.775</b>	GND CON <b>121.75 291.775</b>	UNICOM <b>122.95</b>
-----------------------	---	--	----------------------------------	-------------------------



ELEV <b>682</b>	<b>D</b>	TDZE <b>679</b>
-----------------	----------	-----------------



CATEGORY	A	B	C	D
LPV DA		879-1	200 (200-1)	
LNAV/VNAV DA		929-1	250 (300-1)	
LNAV MDA	1060-1	381 (400-1)	1060-1½	381 (400-1½)
<b>CIRCLING</b>	1140-1 458 (500-1)	1240-1 558 (600-1)	1360-2 678 (700-2)	1360-2¼ 678 (700-2¼)

EC-3, 11 JUL 2024 to 08 AUG 2024

EC-3, 11 JUL 2024 to 08 AUG 2024